

# 2019

#SHARETHEGAME



# HUMMEL SPORT

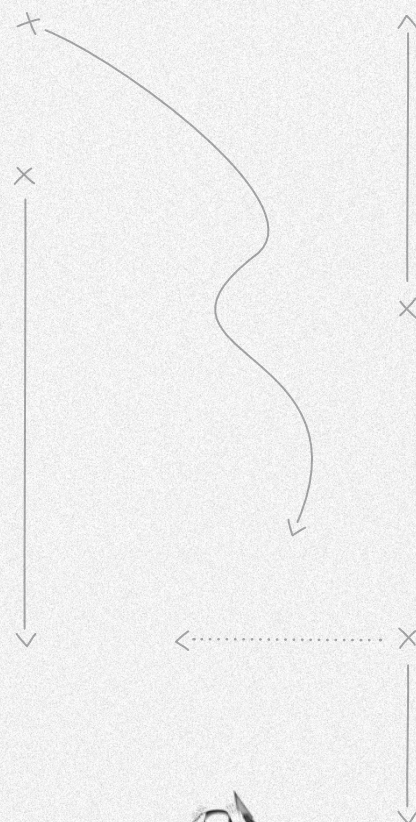


hummel



# CONTENT

Brand History	04
Sponsorships	06
Precision Pro	08
Tech Move	18
Authentic Charge	32
Core	50
Beespoke	68
Goalkeeper & Referee	72
Baselayer & Training	76
Leisure	84
Socks & Accessories	104
Equipment Bags	114
Handballs	120
Footballs	128
Volleyballs	136
Footwear	138
POS	148
Index	156
Print Guide	158
Size Chart	159





# TEAMSPORT COLLECTIONS



**08**

PRECISION PRO  
2018-2019



**18**

TECH MOVE  
2018-2020



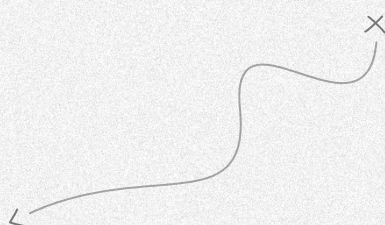
**32**

AUTHENTIC  
CHARGE  
2017-2019



**50**

CORE  
2016-2021





# HUMMEL BRAND HISTORY



Bernhard Weckenbrock

## 1923

Albert Messmer develops one of the first football cleats in the world. With his brother Michael Ludwig Messmer, he founds the company Messmer & Co., that will go on to become known as hummel.



## 1970

hummel is introduced to the Northern European market.

## 1956

The visionary Bernhard Weckenbrock takes over the company. He creates a comprehensive brand identity and introduces the chevrons.



## 1969

The first sportswear collection is launched. Sponsorships are signed and help boost sales. A rounder version of the bumblebee than the current one is created.

## 1968

The first sponsorship deal is signed. The deal is with Duisburg, a team playing in the 2nd German Bundesliga.

## 1979

hummel signs a sponsorship deal with the Danish national team for the first time – a deal that lasts until 2004.

## 1988

hummel signs a sponsorship deal with Real Madrid and the club's biggest star, Emilio Butragueño. The deal makes hummel products even more popular.



Emilio Butragueño



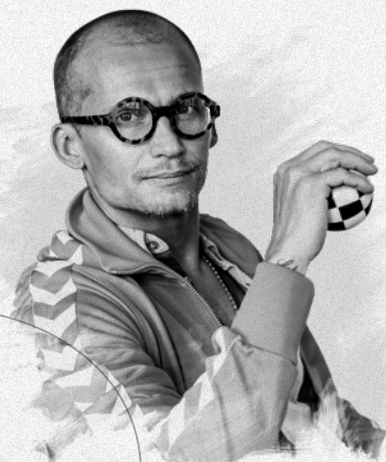
# 1992

It's a surprising win, to say the least. The Danish national team takes the title at the European Championships having played Germany in the final.



# 1999

hummel gets a new owner – Thornico. Christian Stadil becomes part of the brand history. He launches a reintroduced, original sport style collection on the fashion market and hummel becomes a trendsetting sports apparel brand.



Christian Stadil

# 2017

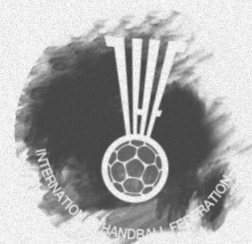
The Danish women's team wins silver at the Women's Euro Championship in the Netherlands, losing to the Netherlands in the final.

# 2016

After many years hummel once again sponsors a team in the German Bundesliga. SC Freiburg plays a sensational first season after returning to the first league and qualifies for international competition.

# 2013

hummel celebrates its 90th birthday with the relaunch of a range of heritage styles.



# 2018

hummel signs a sponsorship deal with Scottish giants Rangers F.C. – the club with the most league titles in the world. From hummels perspective, the deal marks a renewed focus on football in the UK.

# 2019

The International Handball Federation and hummel join forces, with hummel becoming the official technical sponsor and clothing supplier of the IHF. The new partnership starts with The IHF World Men's Championships in Denmark and Germany in January 2019





# 1000+

## SPONSORSHIPS

hummel is proud to sponsor a powerful, inspiring and unparalleled roster of teams, clubs, and players in countries all over the world. Together, they form #teamhummel – and in different ways, they bring character, strong social values, and

commitment to the game. To bring some of our key collections to life, we have visited six of the clubs we sponsor – and at hummel, we work hard to create even closer relationships with all partners in the years to come.







SHARE  
THE **GAME**



**KASPER FISKER**  
BRØNDBY IF

PRECISION PRO JERSEY S/S **201626** & PRECISION PRO SHORTS **201632**



# PRECISION PRO

## COLLECTION RUNNING FROM 2018-2019

### Own the game – always

Many styles feature cool and practical functionalities, such as **BEECOOL**® (moisture-wicking fabrics), seamless knits, body mapping, muscle and spine support as well as soft touch elastic waistbands. These features allow for athletes to

play at their absolute best. Precision Pro takes a contemporary, sophisticated and sporty approach to the hummel® heritage look featuring textured transfer-print chevrons and a variety of playful, geometric knit patterns. All styles feature an active fit ensuring great comfort and ease of movement.



**LIGHTWEIGHT FABRICS  
& MOISTURE MANAGEMENT**



**BODY MAPPING SYSTEMS  
& MUSCLE SUPPORT**



**COMPRESSION FABRICS FOR  
PERFORMANCE AND RECOVERY**



**OUTDOOR PROTECTION & VISIBILITY**





# PRECISION PRO

## FUNCTIONALITIES

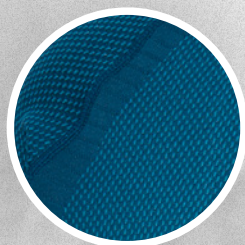




# PRECISION PRO

FUNCTIONALITIES

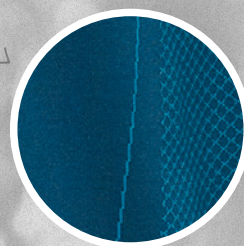
**BESAR HALIMI**  
BRØNDBY IF



Geometric knit patterns  
making the fabric adjust  
to the body



Textured transfer-  
print logo for a classic  
hummel look



Seamless knitting  
providing a comfortable,  
active fit



Engineered waistband  
with integrated drawcourt

Body mapping system  
offering built-in venti-  
lation and insulation  
zones

Stretchable  
material in a  
contemporary cut



# PRECISION PRO

## OVERVIEW

**PRECISION PRO  
JERSEY SS**  
201626



**PRECISION PRO  
HALF ZIP SWEATSHIRT**  
201627



**PRECISION PRO  
TRAINING ZIP JACKET**  
201628



**PRECISION PRO SHORTS**  
201632



**PRECISION PRO  
FOOTBALL PANT**  
201631



**PRECISION PRO  
POLY PANT**  
201699



**PRECISION PRO  
ZIP HOODIE**  
201629









## PRECISION PRO JERSEY S/S

- 78% polyester, 22% nylon
- Mixed knit pattern body mapping
- Printed hummel logo and chevron with graphic
- Slim fit
- Seamless
- BeeCool

201626 : 2XS-XS S-M L-XL 2XL-3XL



## PRECISION PRO SHORTS

- 90% polyester, 10% Spandex
- 4-way stretch woven material
- Back panel in stretch mesh
- Engineered waistband with drawcord
- Printed chevrons and hummel logo
- Slim fit
- BeeCool

201632 : S M L XL 2XL



## PRECISION PRO HALF ZIP SWEATSHIRT

- 90% polyester, 10% spandex
- Stretchable material
- Thumbhole for performance fit
- Stretch mesh panel underneath the arm
- Reversed coil zip
- Printed chevron and hummel logo with graphic
- Regular fit

201627 : S M L XL 2XL



## PRECISION PRO FOOTBALL PANT

- 98% polyester, 2% spandex
- Stretchable material
- Rib at back leg
- Engineered waistband with drawcord
- Performance fit
- Slim fit

201631 : S M L XL 2XL





## PRECISION PRO TRAINING ZIP JACKET

- 85% polyester, 15% spandex
- 4-way stretch woven material
- Thumbhole for performance fit
- Stretch mesh for ventilation
- Printed chevrons and logo with graphic
- Slim fit

201628 : S M L XL 2XL



2001  
BLACK



7009  
MOONLIT OCEAN



## PRECISION PRO ZIP HOODIE

- 100% polyester
- Printed chevron and logo with graphic
- Chevron shapes cutlines
- Stretch and ventilation panels
- Lined hood with drawstring
- Slim fit

201629 : S M L XL 2XL



2001  
BLACK



7009  
MOONLIT OCEAN



## PRECISION PRO POLY PANT

- 93% polyester, 7% spandex
- Knitted fabric
- Side pockets with zip
- Engineered waistband with drawcord
- Back in stretch mesh
- Printed hummel and chevron
- Slim fit

201699 : S M L XL 2XL



2001  
BLACK











Precision Pro Jersey SS **201626**  
Precision Pro Shorts **201632**  
Kasper Fisker, Brøndby IF



Precision Pro Jersey SS **201626**  
Precision Pro Shorts **201632**  
Hany Mukhtar, Brøndby IF



Precision Pro Jersey SS **201626**  
Precision Pro Shorts **201632**  
Mikael Uhre, Brøndby IF



Precision Pro Half Zip Sweatshirt **201627**  
Precision Pro Jersey SS **201626**  
Nikolai Laursen, Brøndby IF





**RENÉ TOFT HANSEN**  
MVM VESZPRÉM KC

TECH MOVE JERSEY S/S **2000004** & TECH MOVE POLY SHORTS **2000008**



# TECH MOVE

## COLLECTION RUNNING FROM 2018-2020

### The multifunctional team sport collection

Tech Move is designed for high-performance team sport athletes who appreciate a combination of high functionality and modern aesthetics. It is a multifunctional performance collection that com-

bines the functionality of lightweight fabrics with second skin comfort. Textured chevrons and 3D signature mesh panels are integrated into the articulated seams, and as the designs are all-weather items, they reflect the inherent Danish DNA of hummel.



### LIGHTWEIGHT MATERIALS WITH SECOND SKIN COMFORT



### HIGH-PERFORMANCE FUNCTIONS AND BENEFITS



### ALL-WEATHER DESIGNS



### INCREASED FUNCTIONALITY



# TECH MOVE

## FUNCTIONALITIES



Reduced top stitching



Integrated thumbholes



Contemporary fit to enhance ease of movement



Articulated cut sleeves with signature 3D mesh panel

Concealed lightweight trims and fastenings

Improved fit



# TECH MOVE

## FUNCTIONALITIES



Clean design lines



Printed textured chevrons  
with 3D effect

High density lightweight  
knit and moisture wicking  
abilities

**BEECOOL®**  
Moisture  
management



Side body signature  
3D mesh panels

**MARCO TERRAZZINO**  
SC FREIBURG



# TECH MOVE

## OVERVIEW

TECH MOVE  
JERSEY S/S  
200004/ 200005



TECH MOVE  
JERSEY WOMEN S/S  
200006



TECH MOVE  
JERSEY L/S  
200007/ 200048



TECH MOVE  
POLY SHORTS  
200008/ 200009



TECH MOVE  
POLY SHORTS WOMEN  
200010





**TECH MOVE  
POLY ZIP JACKET**  
200013/ 200014



**TECH MOVE  
POLY HOODIE**  
200017/ 200018



**TECH MOVE  
HALF ZIP SWEATSHIRT**  
200011/ 200012



**TECH MOVE  
ZIP HOOD**  
200019/ 200020



**TECH MOVE  
TRAINING SHORTS**  
200025/ 200026



**TECH MOVE  
POLY PANTS**  
200015/ 200016



**TECH MOVE  
FOOTBALL PANTS**  
200021/ 200022



**TECH MOVE  
FUNCTIONAL LIGHT WEIGHT JACKET**  
200646/ 201000



**TECH MOVE  
ALL WEATHER JACKET**  
200027/ 200028



**TECH MOVE  
BENCH JACKET**  
200029





## TECH MOVE JERSEY S/S

- 100% polyester
- Knit fabric
- Rib crew neck
- Signature mesh side panels and signature label
- Textured printed chevrons and printed logo
- Regular fit
- BeeCool

200005 : 116 128 140 152 164 176  
200004 : S M L XL 2XL 3XL



## TECH MOVE JERSEY L/S

- 100% polyester
- Knitted fabric
- Rib crew neck
- Signature mesh side panels and label
- Textured printed chevrons and printed logo
- Regular fit
- BeeCool

200048 : 116 128 140 152 164  
200007 : S M L XL 2XL 3XL



## TECH MOVE POLY SHORTS

- 100% polyester
- Knitted fabric
- Signature mesh side panels and label
- Inner briefs only in color 9001
- Textured printed chevrons and printed logo
- Regular fit
- BeeCool

200009 : 116 128 140 152 164  
200008 : S M L XL 2XL 3XL





TECH MOVE JERSEY WOMAN S/S

- 100% polyester
  - Knitted fabric
  - Rib crew neck
  - Signature mesh side panels and label
- Textured printed chevrons and printed logo
  - Regular fit
  - BeeCool

200006 : XS S M L XL 2XL



TECH MOVE

TECH MOVE POLY SHORTS WOMAN

- 100% polyester
- Knitted fabric
- Signature mesh side panels and label
- Inner briefs only in color 9001
- Textured printed chevrons and printed logo
- Regular fit
- BeeCool

200010 : XS S M L XL 2XL





## TECH MOVE POLY ZIP JACKET

- 100% polyester
- Knitted fabric
- Integrated thumbholes
- Signature mesh side panels and label
- Textured printed chevrons and printed logo
- Regular fit

200014 : 116 128 140 152 164

200013 : S M L XL 2XL 3XL



## TECH MOVE POLY HOODIE

- 95% polyester, 5% elastane
- Integrated thumbholes
- Signature mesh side panels and label
- Textured printed chevrons and printed logo
- Regular fit

200018 : 116 128 140 152 164

200017 : S M L XL 2XL 3XL



## TECH MOVE HALF ZIP SWEATSHIRT

- 100% polyester
- Texture knitted fabric
- Integrated thumbholes
- Signature mesh side panels and label
- Textured printed chevrons and printed logo
- Regular fit

200012 : 116 128 140 152 164

200011 : S M L XL 2XL



## TECH MOVE ZIP HOOD

- 95% polyester, 5% elastane
- Integrated thumbholes
- Signature mesh side panels and label
- Textured printed chevrons and printed logo
- Regular fit

200020 : 116 128 140 152 164

200019 : S M L XL 2XL 3XL





TECH MOVE TRAINING SHORTS

- 92% polyester, 8% elastane
- 4-ways stretch woven fabric
- Signature mesh leg panels and signature label
- Front zip pockets
- Textured printed chevrons and printed logo
- Regular fit

200026 : 116 128 140 152 164  
200025 : S M L XL 2XL



TECH MOVE

TECH MOVE POLY PANTS

- 100% polyester
- Knitted fabric
- Invisible zip pockets
- Signature mesh side panels and label
- Textured printed chevrons and printed logo
- Regular fit

200016 : 116 128 140 152 164  
200015 : S M L XL 2XL 3XL



TECH MOVE FOOTBALL PANTS

- 100% polyester
- Rib at back calf panels
- Invisible zip pockets
- Signature mesh side panels and label
- Textured printed chevrons and printed logo
- Textured mesh back yoke
- Regular fit

200022 : 116 128 140 152 164  
200021 : S M L XL 2XL





## TECH MOVE FUNCTIONAL LIGHT WEIGHT JACKET

- 100% polyester
- Woven fabric
- Mini ripstop, semi transparent
- Invisible zip pockets
- Textured printed chevrons and printed logo
- Regular fit
- Water repellent

201000 : 116 128 140 152 164  
200646 : S M L XL 2XL



## TECH MOVE ALL WEATHER JACKET

- 100% polyester
- Stretch woven fabric with membrane
- Storm cuffs
- Underarm ventilation
- Textured printed chevrons and printed logo
- Regular fit
- Water repellent
- Ventilation

200028 : 116 128 140 152 164  
200027 : S M L XL 2XL



## TECH MOVE BENCH JACKET

- 100% polyester
- Woven fabric
- Quilted padding
- Storm cuff
- Invisible zip pockets
- Textured printed chevrons and printed logo
- Regular fit
- Water repellent

200029 : S M L XL 2XL 3XL







→  
Tech Move Half Zip Sweatshirt **200011**  
& Tech Move Poly Shorts Women **200010**  
Sofie Svava, Brøndby IF

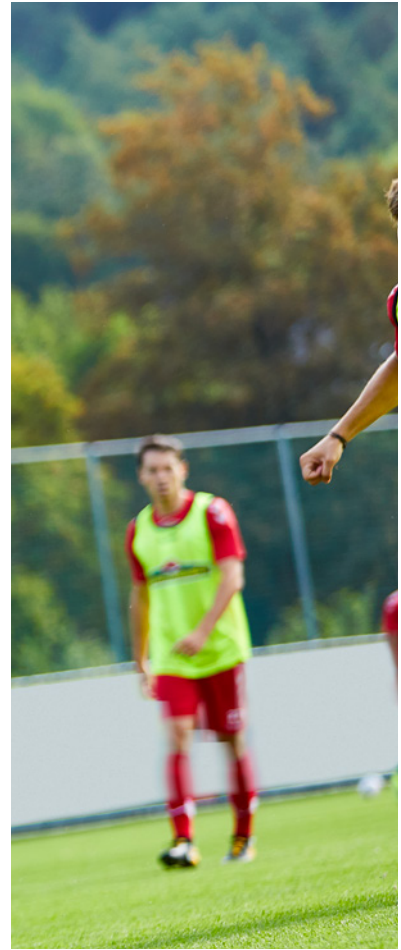


↑  
Tech Move Jersey Women S/S **200006**  
& Tech Move Poly Shorts Women **200010**  
Büşra Barut, Brøndby IF



→  
Tech Move Jersey Women S/S **200006**  
& Tech Move Poly Shorts Women **200010**  
Mille Gejl Jensen, Brøndby IF





↑  
Tech Move Jersey S/S **200004**  
& Tech Move Poly Shorts **200008**  
Florian Niederlechner, SC Freiburg



←  
Tech Move Jersey S/S **200004**  
Christian Günter, SC Freiburg

↑  
Tech Move Jersey S/S **200004**  
& Tech Move Poly Shorts **200008**  
Florian Niederlechner, SC Freiburg





↑  
Tech Move Jersey S/S **200004**  
& Tech Move Poly Shorts **200008**  
László Nagy, MVM Veszprém KC



↑  
Tech Move Jersey S/S **200004**  
& Tech Move Poly Shorts **200008**  
Máté Lékai, MVM Veszprém KC



→  
Tech Move Jersey S/S **200004**  
& Tech Move Poly Shorts **200008**  
Mirsad Terzić, MVM Veszprém KC





**FREDRIK NORDKVELLE**  
ODDS BALLKLUBB

AUTHENTIC CHARGE POLY ZIP JACKET **033401** & AUTHENTIC CHARGE 3/4 PANTS **037614**



# AUTHENTIC CHARGE

**COLLECTION RUNNING FROM 2017-2019**

**The full range for every kind of training**

As the most iconic team sport collection in the hummel range, Authentic Charge covers everything players need. From lightweight indoor jerseys to outerwear, Authentic Charge combines performance-enhanced fabrics with comfort,

optimal ease of movement and great attention to functional details. It incorporates maximum ventilation, weather protection and features for maximum speed and performance. With chevron tape and speed-stripes, Authentic Charge has a unique signature that underlines its popularity.

**X LIGHTWEIGHT PERFORMANCE  
AND MAXIMUM VENTILATION**

**X STREAMLINED DESIGNS  
WITH FUNCTIONAL DETAILS**

**X FOCUS ON SPEED AND  
EASE OF MOVEMENT**

**X WEATHER PROTECTION FOR COMFORT**



# AUTHENTIC CHARGE

## FUNCTIONALITIES





# AUTHENTIC CHARGE

FUNCTIONALITIES

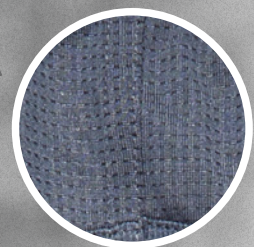
AUTHENTIC  
CHARGE

**TIMUR DIBIROV**  
RK VARDAR

Modern textured chevron  
tape with a clear heritage  
reference

High density lightweight  
knit and moisture  
wicking abilities

Speed stripe to  
elevate design  
experience



Back yoke in mesh for  
improved ventilation



# AUTHENTIC CHARGE

## OVERVIEW

**AUTHENTIC CHARGE  
SS POLY JERSEY**  
003677/ 103677



**AUTHENTIC CHARGE  
SS POLY JERSEY WOMEN**  
003678



**AUTHENTIC CHARGE  
LS POLY JERSEY**  
004616/ 104616



**AUTHENTIC CHARGE  
SS TRAINING JERSEY**  
003679/ 103679



**AUTHENTIC CHARGE  
POLY SHORTS**  
011334/ 111334



**AUTHENTIC CHARGE  
POLY SHORTS WOMEN**  
011335



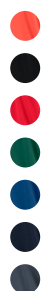
**AUTHENTIC CHARGE  
FUNCTIONAL POLO**  
002435



**AUTHENTIC CHARGE  
TRAINING SHORTS**  
011503/ 111503



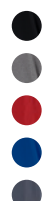
**AUTHENTIC CHARGE  
TRAINING SWEAT**  
033406/ 133406



**AUTHENTIC CHARGE  
POLY HOODIE**  
033403/ 133403



**AUTHENTIC CHARGE  
POLY HOODIE WOMAN**  
033415



**AUTHENTIC CHARGE  
ZIP HOODIE**  
033416/ 133416



**AUTHENTIC CHARGE  
FOOTBALL PANTS**  
037229/ 137229



**AUTHENTIC CHARGE  
3/4 PANTS**  
037614/ 137614



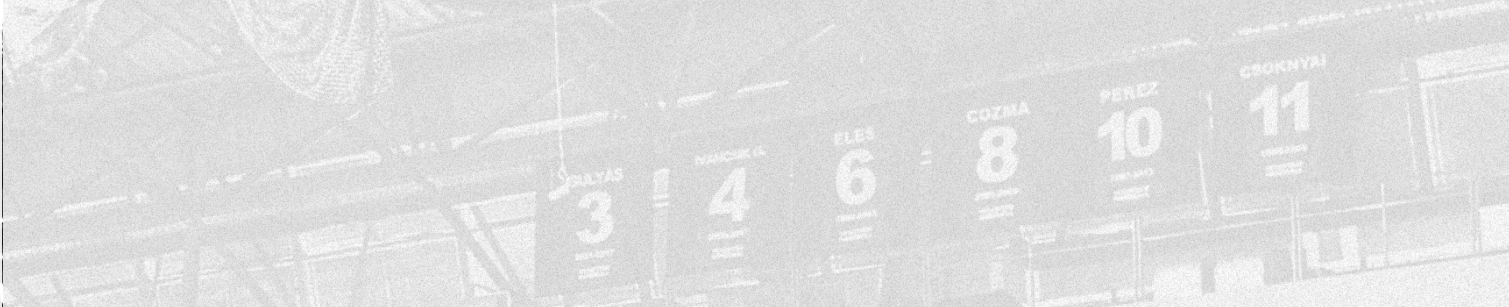
**AUTHENTIC CHARGE  
MICRO ZIP JACKET**  
033551/ 133551



**AUTHENTIC CHARGE  
MICRO ZIP JACKET WOMEN**  
033552







**AUTHENTIC CHARGE  
POLY ZIP JACKET**  
033401/ 133401



**AUTHENTIC CHARGE  
POLY ZIP JACKET WOMAN**  
033402



**AUTHENTIC CHARGE  
COTTON SWEATSHIRT**  
003709/ 103709



**AUTHENTIC CHARGE  
MICRO PANT**  
037227/ 137227



**AUTHENTIC CHARGE  
MICRO PANT WOMEN**  
037231



**AUTHENTIC CHARGE  
POLY PANTS**  
037228/ 137228



**AUTHENTIC CHARGE  
SWEAT PANT**  
037127/ 137127



**AUTHENTIC CHARGE  
LIGHT WEIGHT WINDBREAKER**  
083048/ 183048



**AUTHENTIC CHARGE  
WINDBREAKER**  
083036/ 183036



**AUTHENTIC CHARGE  
FUNCTIONAL JACKET**  
083051/ 183051



**AUTHENTIC CHARGE  
ALLWEATHER JACKET**  
083049/ 183049



**AUTHENTIC CHARGE  
STADION JACKET**  
083050/ 183050



**RUNNER  
SS TEE**  
019207



**RUNNER  
SS TEE**  
019207





## AUTHENTIC CHARGE SS POLY JERSEY

- 100% polyester
- 1x1 contrast rib crew neck
- Contrast speed stripe
- Textured woven chevron tape
- Embroidered logo

- Colour codes marked with \* are adult sizes
- Adult sizes are without mesh on back
- Regular fit
- BeeCool

103677 : 104 116-128 140-152 164-176  
003677 : S M L XL 2XL 3XL



## AUTHENTIC CHARGE LS POLY JERSEY

- 100% polyester
- 1x1 contrast rib crew neck
- Contrast speed stripe
- Textured woven chevron tape

- Embroidered logo
- Regular fit
- BeeCool

104616 : 116-128 140-152 164-176  
004616 : S M L XL 2XL



## AUTHENTIC CHARGE POLY SHORTS

- 100% polyester
- 100% polyester grid mesh back yoke
- Contrast speed stripe
- Polyester drawcord with silver printed hummel tip
- Textured woven chevron tape
- Embroidered logo
- Regular fit
- BeeCool

111334 : 104 116-128 140-152 164-176  
011334 : S M L XL 2XL 3XL





## AUTHENTIC CHARGE SS POLY JERSEY WOMAN

- 100% polyester
- 1x1 contrast rib crew neck
- Contrast speed stripe
- Textured woven chevron tape
- Embroidered logo
- Regular fit
- BeeCool

003678 : XS S M L XL 2XL



0366  
NASTURTIUM/  
OMBRE BLUE



2001  
BLACK



2007  
DARK GREY MELANGE



3062  
TRUE RED



3233  
BRIGHT ROSE



3819  
LIBERTY



5001  
SPORTS YELLOW



6140  
EVERGREEN



6595  
GREEN GECKO



7045  
TRUE BLUE



7364  
TOTAL ECLIPSE



8730  
OMBRE BLUE/  
NASTURTIUM



9001  
WHITE



AUTHENTIC  
CHARGE

## AUTHENTIC CHARGE POLY SHORTS WOMAN

- 100% polyester
- 100% polyester grid mesh back yoke
- Contrast speed stripe
- Polyester drawcord with silver printed hummel tip
- Textured woven chevron tape
- Inner briefs only for color 9001
- Embroidered logo
- Regular fit
- BeeCool

011335 : XS S M L XL 2XL



2001  
BLACK



3062  
TRUE RED



5001  
SPORTS YELLOW



6140  
EVERGREEN



7045  
TRUE BLUE



7364  
TOTAL ECLIPSE



8730  
OMBRE BLUE/  
NASTURTIUM



9001  
WHITE





## AUTHENTIC CHARGE MICRO ZIP JACKET

- 100% polyester
- 100% polyester mesh lining
- Emboss print on shoulders
- Reverse coil zip front and pockets
- Textured silicon chevron zip pulls
- Stretch binding cuffs & hem
- Contrast speed stripe
- Authentic Charge textured woven label
- Silver transfer size print
- Textured woven chevron tape
- Embroidered logo
- Regular fit

133551 : 116 128 140 152 164 176  
033551 : S M L XL 2XL 3XL



## AUTHENTIC CHARGE MICRO ZIP JACKET WOMAN

- 100% polyester
- 100% polyester mesh lining
- Emboss print on shoulders
- Reverse coil zip front and pockets
- Textured silicon chevron zip pulls
- Stretch binding cuffs & hem
- Contrast speed stripe
- Authentic Charge textured woven label
- Silver transfer size print
- Textured woven chevron tape
- Embroidered logo
- Regular fit

033552 : XS S M L XL 2XL



## AUTHENTIC CHARGE POLY ZIP JACKET

- 100% polyester
- Reverse coil front zip
- Textured silicon chevron zip pull
- Emboss printed back neck tape
- Concealed reverse coil zip pockets
- 100% polyester mesh pocket bags
- Polyester/elastane 1x1 rib collar & cuffs
- Contrast speed stripe
- Authentic Charge textured woven label
- Textured woven chevron tape
- Embroidered logo
- Regular fit

133401 : 116 128 140 152 164 176  
033401 : S M L XL 2XL



## AUTHENTIC CHARGE POLY ZIP JACKET WOMAN

- 100% polyester
- Reverse coil front zip
- Textured silicon chevron zip pull
- Emboss printed back neck tape
- Concealed reverse coil zip pockets
- 100% polyester mesh pocket bags
- Polyester/elastane 1x1 rib collar & cuffs
- Contrast speed stripe
- Authentic Charge textured woven label
- Textured woven chevron tape
- Embroidered logo
- Regular fit

033402 : XS S M L XL 2XL





AUTHENTIC CHARGE MICRO PANT

- 100% polyester
  - 100% polyester mesh lining
  - Reverse coil zip pockets
  - Textured silicon chevron zip pulls
  - Polyester drawcord with hummel printed tip
  - Concealed reverse coil hem leg zippers
- Authentic Charge textured woven label
  - Textured woven chevron tape
  - Embroidered logo
  - Regular fit

137227 : 116 128 140 152 164 176  
037227 : S M L XL 2XL 3XL



2001  
BLACK



AUTHENTIC  
CHARGE

AUTHENTIC CHARGE MICRO PANT WOMAN

- 100% polyester
  - 100% polyester mesh lining
  - Reverse coil zip pockets
  - Textured silicon chevron zip pulls
  - Polyester drawcord with hummel printed tip
  - Concealed reverse coil hem leg zippers
- Authentic Charge textured woven label
  - Textured woven chevron tape
  - Embroidered logo
  - Regular fit

037231 : XS S M L XL 2XL



2001  
BLACK



AUTHENTIC CHARGE POLY PANTS

- 100% polyester
  - Concealed reverse coil zip pockets
  - Mesh back yoke & pocket bags
  - Textured silicon chevron zip pulls
  - Polyester drawcord with hummel printed tip
  - Concealed reverse coil hem leg zippers
- Contrast speed stripe
  - Authentic Charge textured woven label
  - Textured woven chevron tape
  - Embroidered logo
  - Regular fit

137228 : 116 128 140 152 164 176  
037228 : S M L XL 2XL



2001  
BLACK





## AUTHENTIC CHARGE TRAINING SWEAT

- 100% polyester interlock knit
- Reverse coil zip neck with silicon zip pull
- Emboss printed back neck tape
- Emboss print on shoulders
- Stretch binding at collar, cuffs, hem & thumbhole
- Contrast speed stripe
- Authentic Charge woven chevron tape
- Embroidered logo
- Regular fit

133406 : 116 128 140 152 164 176  
003406 : S M L XL 2XL



## AUTHENTIC CHARGE COTTON SWEATSHIRT

- 70% cotton, 30% polyester
- 1x1 rib collar, cuffs & hem
- Emboss print back neck tape
- Contrast speed stripe
- Authentic Charge textured woven label
- Textured woven chevron tape
- Embroidered logo
- Regular fit

103709 : 116-128 140-152 164-176  
003709 : S M L XL 2XL 3XL



## AUTHENTIC CHARGE SS TRAINING JERSEY

- 70% cotton, 30% polyester
- 1x1 contrast rib crew neck
- Transparent silicon print across chest and on sleeve
- Contrast speed stripe
- Textured woven chevron tape
- Embroidered logo
- Regular fit

103679 : 116-128 140-152 164-176  
003679 : S M L XL 2XL 3XL



## AUTHENTIC CHARGE FUNCTIONAL POLO

- 100% polyester
- 1x1 contrast rib collar
- Embossed back neck tape
- Contrast inside placket
- 2 ligne buttons
- Contrast speed stripe
- Textured woven chevron tape
- Embroidered logo
- Regular fit
- BeeCool

002435 : S M L XL 2XL 3XL





## AUTHENTIC CHARGE FOOTBALL PANTS

- 100% polyester
- 1x1 rib back calf panel
- Drawcord with hummel printed tip
- Authentic Charge textured woven label
- Textured woven chevron tape

- Embroidered logo
- Zip pockets
- Regular fit

137229 : 116 128 140 152 164 176  
037229 : S M L XL 2XL



2001  
BLACK



AUTHENTIC  
CHARGE

## AUTHENTIC CHARGE SWEAT PANT

- 70% cotton, 30% polyester
- 1\*1 rib at cuffs
- Drawcord with hummel printed tip
- Authentic Charge woven chevron tape
- Embroidered logo
- Regular fit

137127 : 116-128 140-152 164-176  
037127 : S M L XL 2XL 3XL



2001  
BLACK



## AUTHENTIC CHARGE 3/4 PANTS

- 100% polyester
- 1x1 rib cuffs
- Polyester drawcord with hummel printed tip
- Authentic Charge textured woven label
- Textured woven chevron tape

- Embroidered logo
- Regular fit

137614 : 116 128 140 152 164 176  
037614 : S M L XL 2XL



2001  
BLACK



## AUTHENTIC CHARGE TRAINING SHORTS

- 100% textured polyester
- Concealed reverse coil zip pockets
- Contrast speed stripe
- Polyester drawcord with silver printed hummel tip
- Textured woven chevron tape

- Embroidered logo
- Regular fit

111503 : 116-128 140-152 164-176  
011503 : S M L XL 2XL



2001  
BLACK





## AUTHENTIC CHARGE POLY HOODIE

- 100% polyester
- 100% polyester mesh hood lining & pocket bag
- Emboss printed back neck tape
- Side pockets
- Polyester/elastane 1x1 rib hem & cuffs
- Contrast speed stripe

- Authentic Charge textured woven label
- Textured woven chevron tape
- Embroidered logo
- Regular fit

133403 : 116 128 140 152 164 176  
033403 : S M L XL 2XL 3XL



## AUTHENTIC CHARGE WOMAN POLY HOODIE

- 100% polyester, knit
- Polyester mesh hood lining and pocket bag
- Emboss printed neck tape
- Side pockets
- Polyester/elastan 1x1 rib at hem and cuff
- Contrast speed stripe

- Textured woven chevron tape
- Embroidered logo
- Regular fit

033415 : XS S M L XL 2XL



## AUTHENTIC CHARGE ZIP HOODIE

- 100% polyester, knit
- 100% polyester mesh hood lining and pocket bag
- Emboss printed neck tape
- Side pockets
- Polyester/elastan 1x1 rib at hem and cuffs
- Contrast speed stripe

- Front zip
- Textured woven chevron tape
- Embroidered logo
- Regular fit

133416 : 116 128 140 152 164 176  
033416 : S M L XL 2XL 3XL



## AUTHENTIC CHARGE WINDBREAKER

- 240T microfiber with light coating
- 100% polyester
- 100% polyester mesh lining
- 1x1 rib turtle neck
- Reverse coil zip neck - opening along raglan sleeve
- Stretch binding cuffs & hem

- Emboss print back neck tape
- Contrast speed stripe
- Authentic Charge textured woven label
- Textured woven chevron tape
- Embroidered logo
- Regular fit

183036 : 116 128 140 152 164 176  
083036 : S M L XL 2XL





## AUTHENTIC CHARGE LIGHT WEIGHT WINDBREAKER

- 380T ripstop, 100% polyester
- 100% polyester mesh lining
- Functional hood: adjustable concealed drawcords to improve fit and peripheral vision
- Back ventilation
- Reverse coil zip neck & pockets
- Textured silicon chevron zip pulls
- Stretch binding cuffs & hem
- Silver transfer size print
- Reflective speed stripe
- Textured woven chevron tape
- Printed logo
- Regular fit
- Ventilation

183048 : 116-128 140-152 164-176

083048 : S M L XL 2XL



2042  
BLACK/  
BLACK



AUTHENTIC  
CHARGE

## AUTHENTIC CHARGE FUNCTIONAL JACKET

- 100% Polyester, 380T ripstop
- 100% Polyester mesh lining
- Packable hood
- Back ventilation
- Reverse coil zip at front and in side pockets
- Textured woven chevron tape
- Printed logo
- Regular fit
- Ventilation

183051 : 116-128 140-152 164-176

083051 : S M L XL 2XL



2042  
BLACK/  
BLACK



8730  
OMBRE BLUE/  
NASTURTIUM



## AUTHENTIC CHARGE ALL-WEATHER JACKET

- 100% Polyester Dobby Taslan WP 3000
- 100% polyester mesh lining
- Concealed reverse coil double ended front zip
- Packable functional hood: adjustable concealed drawcords to improve fit and peripheral vision
- Brushed inside collar and back half moon
- Silver transfer size print
- Storm welt pockets
- Back ventilation
- Stretch storm cuff
- Adjustable hem - concealed cordlock
- Textured silicon chevron zip pull
- Reflective speed stripe
- Textured woven chevron tape
- Embroidered logo
- Regular fit

183049 : 116-128 140-152 164-176

083049 : S M L XL 2XL



2042  
BLACK/  
BLACK



3081  
TRUE RED/  
BLACK



7079  
TRUE BLUE/  
BLACK



8730  
OMBRE BLUE/  
NASTURTIUM



## AUTHENTIC CHARGE STADION JACKET

- 100% polyester, Dobby Taslan WP 3000
- 100% polyester chevron quilted lining
- 180gm2 Padding
- Embossed print on shoulders
- Concealed reverse coil double ended front zip
- Brushed inside collar and back half moon
- Silver transfer size print
- Storm welt pockets
- Storm cuff
- Textured silicon chevron zip pull
- Textured woven chevron tape
- Embroidered logo
- Regular fit

183050 : 116-128 140-152 164-176

083050 : S M L XL 2XL 3XL



2042  
BLACK/  
BLACK



8730  
OMBRE BLUE/  
NASTURTIUM





**RUNNER SS TEE**

- 100% polyester
- Ventilation panel at back for maximum breathability
- Moisture wicking fabric - quick dry and high comfort
- Printed chevrons and logo

019207 : S M L XL 2XL



**RUNNER WOMEN SS TEE**

- 100% polyester
- Ventilation panel at back for maximum breathability
- Moisture wicking fabric - quick dry and high comfort
- Printed chevrons and logo

019208 : XS S M L XL





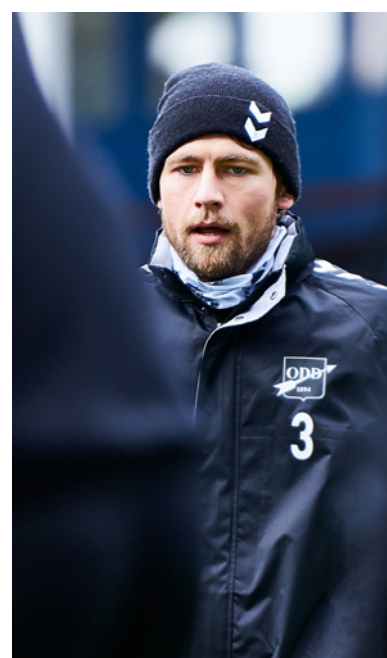


→  
Authentic Charge Windbreaker **083036**  
& Authentic Charge 3/4 Pants **037614**  
Steffen Hagen, Odds BK



↑  
Authentic Charge Stadion Jacket **083050**  
Jan Frode Nornes, Odds BK

→  
Authentic Charge Allweather Jacket **083049**  
Fredrik Semb Berge, Odds BK



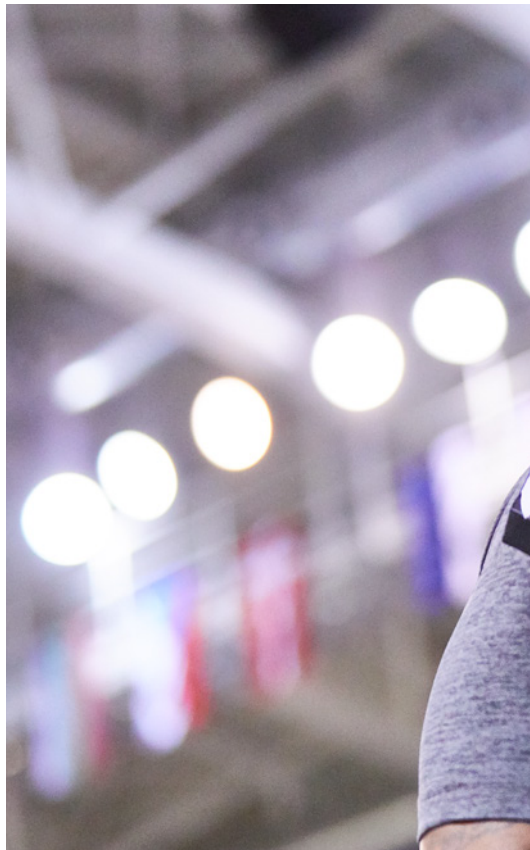








Authentic Charge SS Poly Jersey **003677**  
Rogerio Moraes Ferreira, RK Vardar



Authentic Charge SS Poly Jersey **003677**  
& Authentic Charge Poly Shorts **011334**  
Martin Popovski, RK Vardar



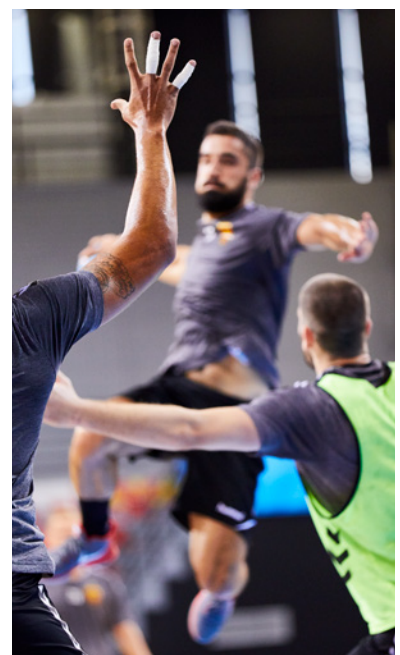
AUTHENTIC  
CHARGE



Authentic Charge SS Poly Jersey **003677**  
Timur Dibiřov, RK Vardar



Authentic Charge SS Poly Jersey **003677**  
& Authentic Charge Poly Shorts **011334**  
Janja Vojvodić, RK Vardar







**ERIK SCHMIDT**  
FÜCHSE BERLIN

CORE SS POLY JERSEY **003636** & CORE POLY SHORTS **011083**



# CORE

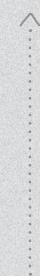
## COLLECTION RUNNING FROM 2018-2021

### The popular collection of quality basics

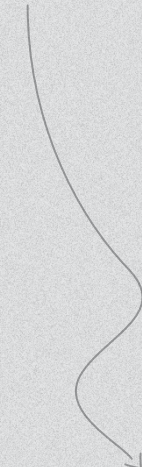
Offering a strong range of quality basics, the popular Core collection covers everything players need for both training and matches. As the collection includes everything from comfortable and durable

jerseys to pants, jackets and sweatshirts, the Core collection is one of hummel's classics. Elevated neck cuts, sleeve hem details, and the iconic chevrons create a look that delivers maximum value for money.

### QUALITY BASICS SATISFYING EVERY NEED



### COMFORTABLE FABRICS AND FUNCTIONAL CUTS FOR PERFORMANCE



### ICONIC CHEVRON PRINT FOR A CONSISTENT LOOK



### ELEVATED NECK CUTS AND SLEEVE HEM DETAILS





# CORE

FUNCTIONALITIES





# CORE

FUNCTIONALITIES

**VANESSA ZIEGLER**  
SC FREIBURG



Modern neck construction  
in contrast colour

Light weight  
material with  
high wickability



Sleeve hem detail



# CORE OVERVIEW

**CORE SS POLY JERSEY**  
003636/ 103636



**CORE WOMENS SS JERSEY**  
003649



**CORE LS POLY JERSEY**  
004615/ 104615



**CORE BASKET JERSEY**  
003651/103651



**CORE TEAM JERSEY SS**  
203436/203437



**CORE TEAM JERSEY WOMAN SS**  
203438



**CORE STRIPED SS JERSEY**  
003755/ 103755



**CORE BASKET SHORTS**  
011087/111087



**CORE POLY SHORTS**  
011083/ 111083



**CORE WOMENS SHORTS**  
011086



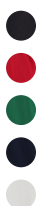
**CORE POLY COACH SHORTS**  
203526/203527



**CORE HIPSTER WOMAN**  
203525/204051



**CORE FUNCTIONAL POLO**  
203447



**CORE FUNCTIONAL POLO WOMAN**  
203448



**CORE POLYESTER TEE**  
003756/ 103756



**CORE POLYESTER TEE WOMAN**  
203435





**CORE 1/2 ZIP SWEAT**  
036895/136895



**CORE 1/2 ZIP SWEAT WOMAN**  
203439



**CORE POLY JACKET**  
036893/136893



**CORE MICRO ZIP JACKET**  
203442/203441



**CORE FOOTBALL PANT**  
032165/132165



**CORE TRAINING POLY PANT**  
203445



**CORE POLY PANT**  
032173/132173



**CORE MICRO PANT**  
203443/203444



**CORE SPRAY JACKET**  
080822/180822



**CORE BENCH JACKET**  
204170/204171



**CORE GK COTTON PANT**  
203446/204172



**CORE TIGHTS WOMAN**  
204300/204301



**CORE ALLWEATHER PANT**  
032181



**CORE BENCH PANTS**  
032182





## CORE TEAM JERSEY S/S

- 100% polyester
- Jersey fabric
- Waterbased logo and chevrons
- Regular fit
- BeeCool

203437 : 116 128 140 152 164 176  
203436 : S M L XL 2XL 3XL



## CORE SS POLY JERSEY

- 100% polyester knit
- Printed chevrons and logo
- Regular fit

103636 : 116-128 140-152 164-176  
003636 : S M L XL 2XL 3XL



## CORE LS POLY JERSEY

- 100% polyester knit
- Printed chevrons & logo
- Regular fit

104615 : 116-128 140-152 164-176  
004615 : S M L XL 2XL 3XL





CORE TEAM JERSEY WOMAN S/S

- 100% polyester
- Jersey fabric
- Waterbased logo and chevrons
- Regular fit
- BeeCool

203438 : XS S M L XL 2XL



CORE

CORE WOMENS SS JERSEY

- 100% polyester knit
- Printed chevrons & logo
- Regular fit

003649 : XS S M L XL 2XL



CORE STRIPED SS JERSEY

- 100% polyester knit
- Sublimation printed stripes at body
- Printed chevrons & logo
- Regular fit

103755 : 116-128 140-152 164-176  
003755 : S M L XL 2XL





## CORE POLYESTER TEE

- 100% polyester knit
- Printed chevrons & logo
- Regular fit

103756 : 104 116-128 140-152 164-176  
003756 : S M L XL 2XL 3XL



1525  
ASPHALT

2001  
BLACK

3062  
TRUE RED

6140  
EVERGREEN

7026  
MARINE

7045  
TRUE BLUE



## CORE POLY TEE WOMAN S/S

- 100% polyester
- Jersey fabric
- Waterbased logo and chevrons
- Regular fit
- BeeCool

203435 : XS S M L XL 2XL



1525  
ASPHALT

2001  
BLACK

3062  
TRUE RED

6140  
EVERGREEN

7026  
MARINE

7045  
TRUE BLUE



## CORE BASKET JERSEY

- 100% polyester knit
- Printed chevrons & logo
- Regular fit

103651 : 116-128 140-152 164-176  
003651 : S M L XL 2XL 3XL



2001  
BLACK

3062  
TRUE RED

5001  
SPORTS YELLOW

6140  
EVERGREEN

7045  
TRUE BLUE

9001  
WHITE





CORE POLY SHORTS

- 100% polyester knit
- Printed chevrons & logo
- Inner briefs only in color way # 9001
- Regular fit

111083 : 116-128 140-152 164-176  
011083 : S M L XL 2XL 3XL



CORE

CORE WOMENS SHORTS

- 100% polyester knit
- Printed chevrons & logo
- Inner briefs only in color 9001
- Regular fit

011086 : XS S M L XL 2XL



CORE BASKET SHORTS

- 100% polyester knit
- Printed chevrons & logo
- Inner briefs only in color way # 9001
- Regular fit

111087 : 116-128 140-152 164-176  
011087 : S M L XL 2XL 3XL





## CORE FUNCTIONAL POLO

- Main: 100% polyester / Rib: polyester, elastane
- Main: Piqué fabric / Rib: flat knit rib
- Placket with buttons CF
- Waterbased printed logo and chevrons
- Regular fit

203447 : S M L XL 2XL 3XL



## CORE FUNCTIONAL POLO WOMAN

- Main: 100% polyester / Rib: polyester, elastane
- Main: Piqué fabric / Rib: flat knit rib
- Placket with buttons CF
- Waterbased printed logo and chevrons
- Regular fit

203448 : XS S M L XL 2XL



## CORE POLY COACH SHORTS

- 100% polyester
- Interlock fabric
- Zippered pockets
- Waterbased printed logo
- Regular fit

203527 : 116 128 140 152 164 176  
203526 : S M L XL 2XL 3XL





CORE HIPSTER WOMAN

- 92% polyester, 8% elastane
- Jersey fabric
- Waterbased printed logo and chevrons
- Tight fit

204051 : 116 128 140 152 164  
203525 : XS S M L XL 2XL



CORE

CORE TIGHTS WOMAN

- 92% polyester, 8% elastane
- Jersey fabric
- Waterbased printed logo and chevrons
- Tight fit

204301 : 116 128 140 152 164  
204300 : XS S M L XL 2XL



CORE INDOOR GK COTTON PANT

- 70% cotton, 30% polyester
- Sweat fabric
- Waterbased printed logo and chevrons
- Regular fit

204172 : 116 128 140 152 164 176  
203446 : S M L XL 2XL 3XL





## CORE POLY JACKET

- 100% polyester knit
- Zippered pockets
- Elastic inside waistband and cuff
- Printed chevrons & logo
- Regular fit

136893 : 116 128 140 152 164 176  
036893 : S M L XL 2XL 3XL



## CORE 1/2 ZIP SWEAT

- 100% polyester knit
- Elastic inside waistband and cuff
- Printed chevrons & logo
- Regular fit

136895 : 116-128 140-152 164-176  
036895 : S M L XL 2XL 3XL



## CORE HALF ZIP SWEAT WOMAN

- 100% polyester
- Interlock fabric
- Elasticated hem at bottom and cuff
- Waterbased printed logo and chevrons
- Regular fit

203439 : XS S M L XL 2XL



## CORE MICRO ZIP JACKET

- Main: 100% polyester / Lining: 100% polyester
- Main: Woven fabric / Lining: Woven fabric and mesh
- Elasticated cuff hem
- Drawstring with string stopper at bottom
- Zipper pockets
- Waterbased printed logo and chevrons
- Regular fit

203442 : 116 128 140 152 164 176  
203441 : S M L XL 2XL 3XL





CORE POLY PANT

- 100% polyester knit
- Zippered pockets
- Zippered leg vents
- Printed chevrons & logo
- Regular fit

132173 : 116 128 140 152 164 176  
032173 : S M L XL 2XL 3XL



CORE FOOTBALL PANT

- 100% polyester knit
- 100% polyester rib at backside of lower legs
- Printed chevrons and logo
- Regular fit

132165 : 116 128 140 152 164 176  
032165 : S M L XL 2XL 3XL



CORE TRAINING POLY PANT

- 100% polyester
- Interlock fabric
- Pockets
- Waterbased printed logo and chevrons
- Regular fit

203445 : S M L XL 2XL 3XL



CORE MICRO PANT

- Main: 100% polyester / Lining: 100% polyester
- Main: Woven fabric / Lining: Woven fabric and mesh
- Zipper at pockets and leg placket
- Waterbased printed logo and chevrons
- Regular fit

203444 : 116 128 140 152 164 176  
203443 : S M L XL 2XL 3XL





## CORE SPRAY JACKET

- 100% woven polyester (190T), 2000M W/P
- Zippered pocket at back of right side seam
- Elastic inside cuff and waistband
- Printed chevrons & logo
- Regular fit

180822 : 116-128 140-152 164-176  
080822 : S M L XL 2XL 3XL



## CORE BENCH JACKET

- 100% polyester
- Woven fabric
- Quilted padding
- Storm cuff
- Zip pockets
- Waterbased printed logo and chevrons
- Regular fit

204171 : 116 128 140 152 164 176  
204170 : S M L XL 2XL 3XL



## CORE ALL-WEATHER PANT

- 100% woven polyester (190T) 2000M W/P
- Zippered side pockets
- Printed logo
- Regular fit

032181 : S M L XL 2XL



## CORE BENCH PANTS

- 100% Polyester with compact padding
- Zippered side pockets
- Printed logo
- Regular fit

032182 : XS S M L XL 2XL 3XL







→  
Core SS Poly Jersey **003636**  
Fabian Wiede, Fuchse Berlin



↑  
Core SS Poly Jersey **003636**  
Core GK Cotton Pant **203446**  
Paul Drux, Fuchse Berlin



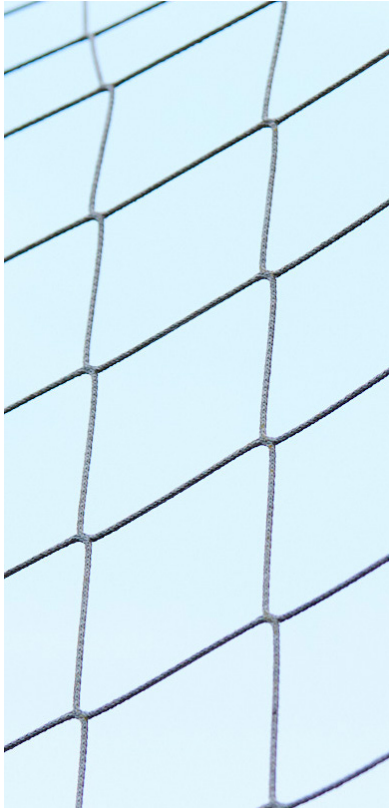
→  
Core SS Poly Jersey **003636**  
Core Poly Shorts **011083**  
Hans Lindberg, Fuchse Berlin







→  
Core Womens SS Jersey **003649**  
Sandra Starke, SC Freiburg



CORE

←  
Core Womens SS Jersey **003649**  
Core Womens Shorts **011086**  
Desiree van Lunteren, SC Freiburg



↑  
Core Womens SS Jersey **003649**  
Core Womens Shorts **011086**  
Klara Bühl, SC Freiburg

→  
Core Womens SS Jersey **003649**  
Core Womens Shorts **011086**  
Jobina Lahr, SC Freiburg





**KIKO OLIVAS**  
REAL VALLADOLID

JERSEY AND SHORTS DESIGNED WITH BESPOKE





# DESIGN YOUR OWN KIT WITH BEE SPOKE

With the hummel BeeSpoke programme, clubs can have unique kits and create their own vision of style. Clubs can choose from five jersey styles with either short or long sleeves, and a variety of special colours. With more than 4000 possible design variations and flexibility on quantity

and lead time, hummel BeeSpoke highlights the individuality of every single club and caters to speciality needs and requirements.

**It's time to go explore the extensive possibilities of the hummel BeeSpoke universe**

**✕ CONTACT YOUR LOCAL HUMMEL DISTRIBUTOR**

**✕ LOGIN TO THE BEE SPOKE WEBSITE AND CLICK ON THE "CREATE NEW DESIGN" BUTTON OR CLICK ON ONE OF THE INSPIRATIONAL JERSEYS ALREADY CREATED**



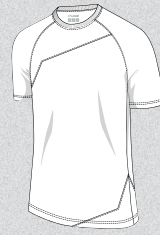


# BEESPOKE

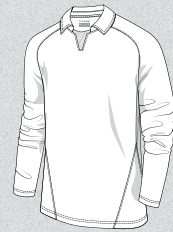
STEP BY STEP



CHOOSE BETWEEN SHORT SLEEVES...



...OR LONG SLEEVES



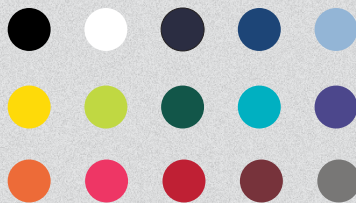
SHORTS



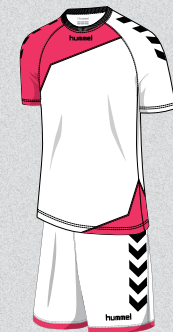
COLORS



STRIPES



EXAMPLES



ALL STYLES ARE AVAILABLE IN MENS, WOMENS AND KIDS SIZES



# BEESPOKE

REAL VALLADOLID

THIS JERSEY IS DESIGNED  
WITH **BEESPOKE**

**KEKO**  
REAL VALLADOLID





**MAGNUS ANTON  
PAAG HANSEN**  
BRØNDBY IF, U19-2

ESSENTIAL GOALKEEPER JERSEY **004087** & ESSENTIAL GOALKEEPER SHORTS **010815**

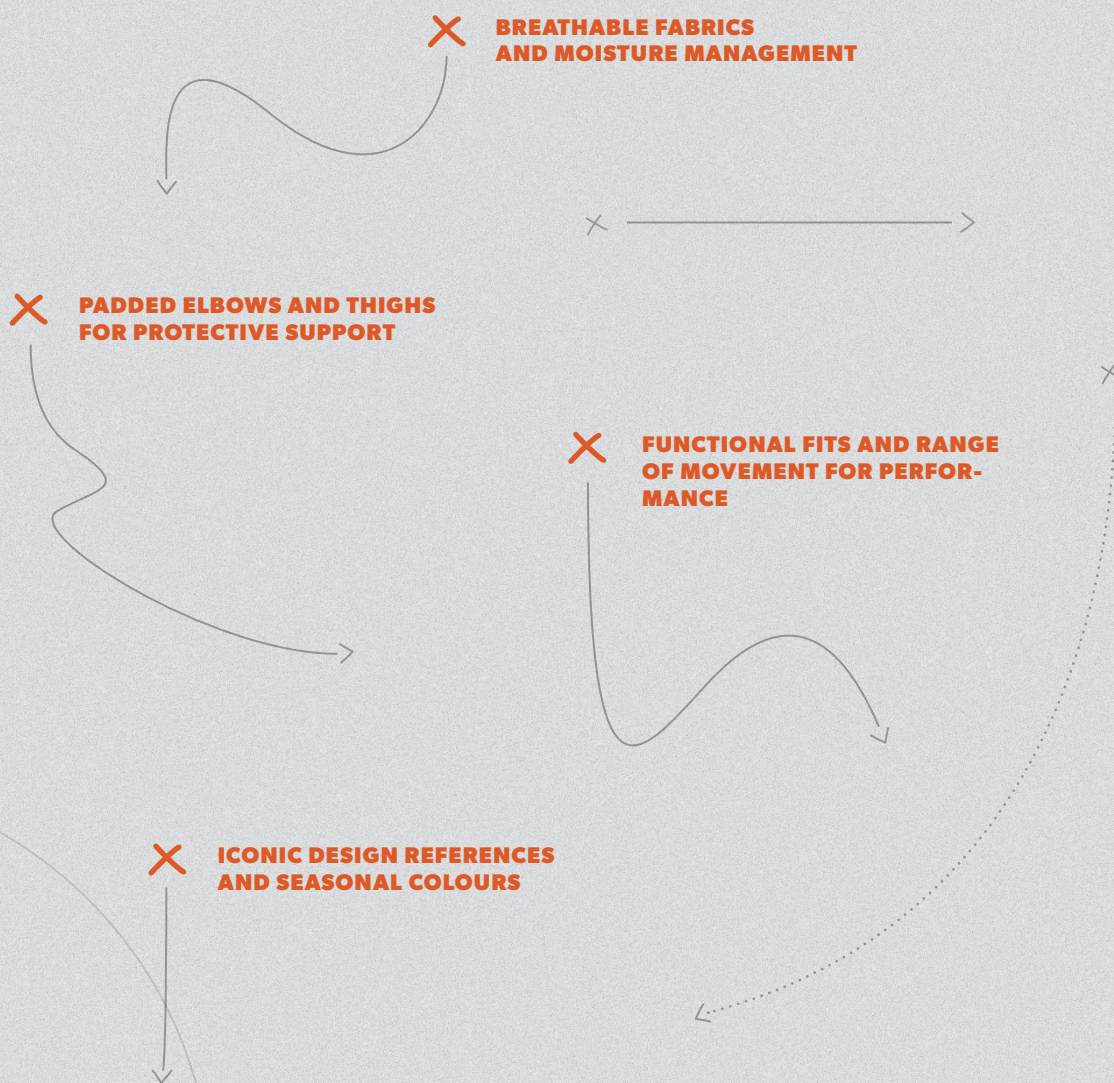


# GOALKEEPER & REFEREE

## Extra protection, fit, and comfort

The goalkeeper and referee collection delivers extra support for every move. Protective padding, effective moisture management and breathable mesh inserts allow for unrestricted movement, extreme leaps and jumps. Padded elbows and tights

ensure optimal protection and both the design and colours allow referees and goalkeepers to be easily recognized on the field or court. Inspired by Peter Schmeichel's iconic 90s goalkeeper jersey, selected styles are decked out with retro embossed print.





## ESSENTIAL GK JERSEY

- 100% polyester
- Moisture management
- Padded elbow protection
- Rib collar and cuffs
- Embossed print pattern on front chest and back
- Printed chevrons and logo

104087 : 116-128 140-152 164-176  
004087 : S M L XL 2XL



4333  
ZINFANDEL

5076  
FLAME

5269  
BLAZING YELLOW

6605  
AQUA GREEN



## ESSENTIAL GK SHORTS

- 100% polyester
- Moisture management
- Printed chevrons and logo

110815 : 116-128 140-152 164-176  
010815 : S M L XL 2XL



2001  
BLACK



## ESSENTIAL GK SHORTS W PADDING

- 100% polyester
- Moisture management
- Padded thigh protection
- Printed chevrons and logo

110816 : 116-128 140-152 164-176  
010816 : S M L XL 2XL



2001  
BLACK





## CLASSIC GK PANT

- 70% polyester, 30 % cotton
- Cool Zone = finish insures effective moisture management, quick dry and high comfort
- Fit Zone = created to support natural active motion
- Guard Zone = padding on each side
- Elastic waistband wit drawstring
- Padding on each side
- Printed logo

131198 : 116/128 140/152 164/176

031198 : M L XL 2XL



2001  
BLACK



## HMLREFEREE JERSEY S/S

- 100% polyester
- Jersey fabric
- Waterbased printed logo and stripes
- Velcro closing at top of pockets
- Regular fit

204960 : XS S M L XL 2XL 3XL



2001  
BLACK



3648  
DIVA PINK



6102  
EVENING PRIMROSE



7905  
SCUBA BLUE



## HMLREFEREE POLY SHORTS

- 100% polyester
- Jersey fabric
- Waterbased printed logo
- 2 front pockets
- Velcro closing at top of back pocket
- Regular fit

204961 : XS S M L XL 2XL 3XL



2001  
BLACK







**DAEL FRY**  
MIDDLESBROUGH FC



HUMMEL FIRST SEAMLESS JERSEY LS **202638** & HUMMEL FIRST SEAMLESS TIGHTS **202640**



# BASELAYER

## **Technical training apparel and premium baselayer designs**

Providing the utmost in technical performance and training wear, the premium Baselayer collection and Running & Training apparel collection offer high-performance with a focus on materials, comfort and functionality. Running & Training features

quick-drying fabrics, reflective prints, moisture management and anti-bacterial treatments, while the Baselayer collection presents three different sub-collections to meet every need of the athlete. Lightweight materials with ventilation zones regulate body temperatures while ergonomic panelling supports muscle movement.

### **X BODY-ADAPTED VENTILATION ZONES AND MOISTURE MANAGEMENT**

### **X LIGHTWEIGHT MATERIALS IN QUICK-DRYING FABRICS**

### **X ERGONOMIC PANELLING, COMPRESSION FABRICS AND SEAMLESS DESIGNS**

### **X ANTI-BACTERIAL TREATMENTS AND HIGH-PERFORMANCE COMFORT**





## COMPRESSION

Fast recovery and full muscle support for team players and athletes

- **HIGH COMPRESSION MUSCLE SUPPORT**  
provides endurance and fast recovery.
- **ERGONOMIC FIT**  
supports your muscle movements and boosts performance.
- **HIGH-STRETCH CAPABILITIES**  
provides ease of movement.

## SEAMLESS

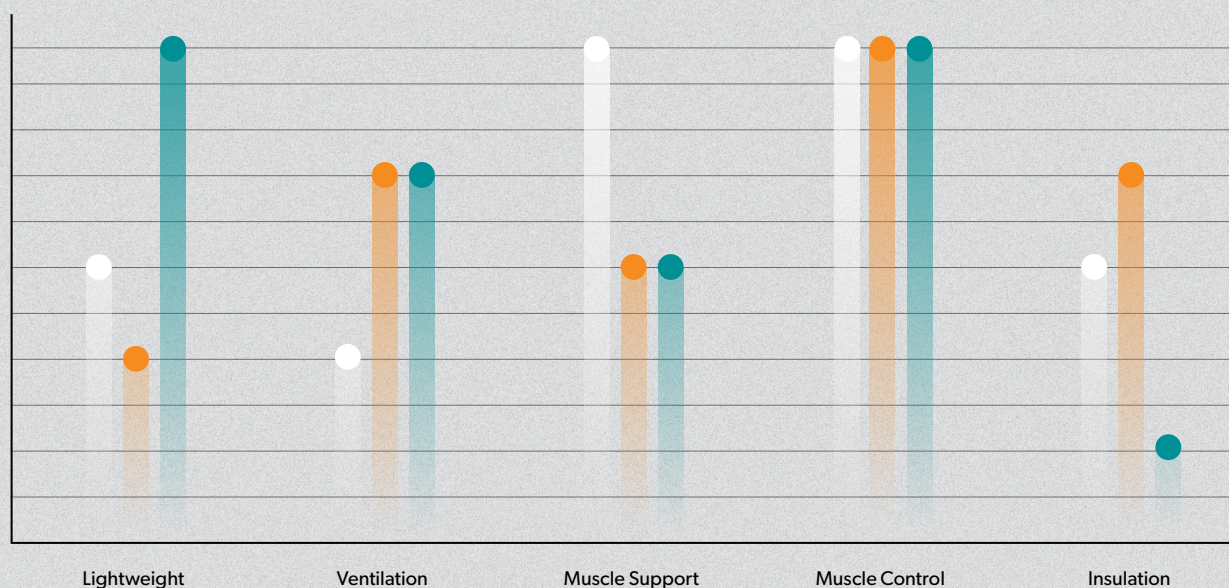
For professional team players and athletes who need extra insulation and ventilation

- **SEAMLESS CONSTRUCTION**  
ensures maximum comfort.
- **INSULATION**  
will keep you warm and comfy.
- **VENTILATION ZONES**  
will cool your body when overheated.
- **MUSCLE-ENHANCING CONSTRUCTION**  
provides freedom of movement.

## PERFORMANCE

Cooling performance for team players and athletes

- **BODY-ADAPTED VENTILATION ZONES**  
will cool your body when overheated.
- **LIGHTWEIGHT FABRIC**  
provides comfort and ease of wear.
- **ERGONOMIC PANELING**  
supports your muscle movements.
- **TIGHT PERFORMANCE FIT**  
provides full motion control.





## HUMMEL FIRST COMPRESSION SS

- 80% Nylon / 20% Spandex
- High compression material for maximum endurance and fast recovery
- Heat transfer chevrons icon logo
- Heat transfer hummel first logo
- Sublimated chevrons and hummel logo in neckline
- Mesh ventilation panels

003746 : S M L XL 2XL



2001  
BLACK



## HUMMEL FIRST COMPRESSION LS

- 80% Nylon / 20% Spandex
- High compression material for maximum endurance and fast recovery
- Heat transfer chevrons icon logo
- Heat transfer hummel first logo
- Sublimated chevrons and hummel logo in neckline
- Mesh ventilation panels

004329 : S M L XL 2XL



2001  
BLACK



## HUMMEL FIRST COMPRESSION SHORT TIGHTS

- 80% Nylon / 20% Spandex
- High compression material for maximum endurance and fast recovery
- Heat transfer chevrons icon logo
- Heat transfer hummel first logo
- Sublimated chevrons and hummel logo in waistline
- Mesh ventilation panels

011361 : S M L XL 2XL



2001  
BLACK



## HUMMEL FIRST COMPRESSION LONG TIGHTS

- 80% Nylon / 20% Spandex
- High compression material for maximum endurance and fast recovery
- Heat transfer chevrons icon logo
- Heat transfer hummel first logo
- Sublimated chevrons and hummel logo in waistline
- Mesh ventilation panels

011362 : S M L XL 2XL



2001  
BLACK





## HUMMEL FIRST SEAMLESS JERSEY S/S

- 92% nylon, 8% elastane
- Stretchable fabric
- Knitted logo and chevrons
- Tight fit
- Seamless

202637 : 116-128 140-152

202636 : XS-S M-L XL-2XL



2001  
BLACK



## HUMMEL FIRST SEAMLESS JERSEY L/S

- 92% nylon, 8% elastane
- Stretchable fabric
- Knitted logo and chevrons
- Tight fit
- Seamless

202639 : 116-128 140-152

202638 : XS-S M-L XL-2XL



2001  
BLACK



## HUMMEL FIRST SEAMLESS SHORT TIGHTS

- 90% nylon, 10% elastane
- Stretchable fabric
- Knitted logo and chevrons
- Tight fit
- Seamless

202643 : 116-128 140-152

202642 : XS-S M-L XL-2XL



2001  
BLACK



## HUMMEL FIRST SEAMLESS TIGHTS

- 90% nylon, 10% elastane
- Stretchable fabric
- Knitted logo and chevrons
- Tight Fit
- Seamless

202641 : 116-128 140-152

202640 : XS-S M-L XL-2XL



2001  
BLACK





HUMMEL FIRST SEAMLESS JERSEY S/S WOMAN

- 92% nylon, 8% elastane
- Stretchable fabric
- Knitted logo and chevrons
- Tight fit
- Seamless

202644 : XS-S M-L XL-2XL



HUMMEL FIRST SEAMLESS JERSEY L/S WOMAN

- 92% nylon, 8% elastane
- Stretchable fabric
- Knitted logo and chevrons
- Tight fit
- Seamless

202645 : XS-S M-L XL-2XL



HUMMEL FIRST SEAMLESS SHORT TIGHTS WOMEN

- 90% nylon, 10% elastane
- Stretchable fabric
- Knitted logo and chevrons
- Tight fit
- Seamless

202649 : XS-S M-L XL-2XL



HUMMEL FIRST SEAMLESS TIGHTS WOMEN

- 90% nylon, 10% elastane
- Stretchable fabric
- Knitted logo and chevrons
- Tight fit
- Seamless

202648 : XS-S M-L XL-2XL



HUMMEL FIRST SEAMLESS BRA WOMEN

- 94% nylon, 6% elastane
- Stretchable fabric
- Padded breastcups
- Knitted logo and chevrons
- Tight Fit
- Seamless

202647 : XS-S M-L XL-2XL



HUMMEL FIRST SEAMLESS TANK TOP WOMAN

- 92% nylon, 8% elastane
- Stretchable fabric
- Knitted logo and chevrons
- Tight Fit
- Seamless

202650 : XS-S M-L XL-2XL



BASELAYER



## HUMMEL FIRST PERFORMANCE JERSEY S/S

- 88% polyester, 12% elastane
- Jersey fabric
- Waterbased printed logo and chevrons
- Mesh insert at neck and armhole
- Tight fit

204501 : 140 152 164  
204500 : S M L XL 2XL



## HUMMEL FIRST PERFORMANCE JERSEY L/S

- 88% polyester, 12% elastane
- Jersey fabric
- Waterbased printed logo and chevrons
- Mesh insert at neck and armhole
- Tight fit

204503 : 140 152 164  
204502 : S M L XL 2XL



## HUMMEL FIRST PERFORMANCE TIGHT SHORTS

- 88% polyester, 12% elastane
- Jersey fabric
- Waterbased printed logo and chevrons
- Mesh insert at waistband and crotch
- Tight fit

204505 : 140 152 164  
204504 : S M L XL 2XL



## HUMMEL FIRST PERFORMANCE TIGHTS

- 88% polyester, 12% elastane
- Jersey fabric
- Waterbased printed logo and chevrons
- Mesh insert at waistband and crotch
- Tight fit

204547 : 140 152 164  
204513 : S M L XL 2XL





**HUMMEL FIRST PERFORMANCE WOMEN JERSEY S/S**

- 88% polyester, 12% elastane
- Jersey fabric
- Waterbased printed logo and chevrons
- Mesh insert at neck and armhole
- Tight fit

204514 : XS S M L XL



**HUMMEL FIRST PERFORMANCE WOMEN JERSEY L/S**

- 88% polyester, 12% elastane
- Jersey fabric
- Waterbased printed logo and chevrons
- Mesh insert at neck and armhole
- Tight fit

204515 : XS S M L XL



**HUMMEL FIRST PERFORMANCE WOMEN HIPSTER**

- 88% polyester, 12% elastane
- Jersey fabric
- Waterbased printed logo and chevrons
- Mesh insert at waistband and crotch
- Tight fit

204516 : XS S M L XL 2XL



**HUMMEL FIRST PERFORMANCE WOMEN TIGHTS**

- 88% polyester, 12% elastane
- Jersey fabric
- Waterbased printed logo and chevrons
- Mesh insert at waistband and crotch
- Tight fit

204517 : XS S M L XL



BASELAYER



**GEORGE FRIEND**  
MIDDLESBROUGH FC

HUMMEL GO COTTON HOODIE **203508** & HUMMEL GO COTTON PANT **203530**

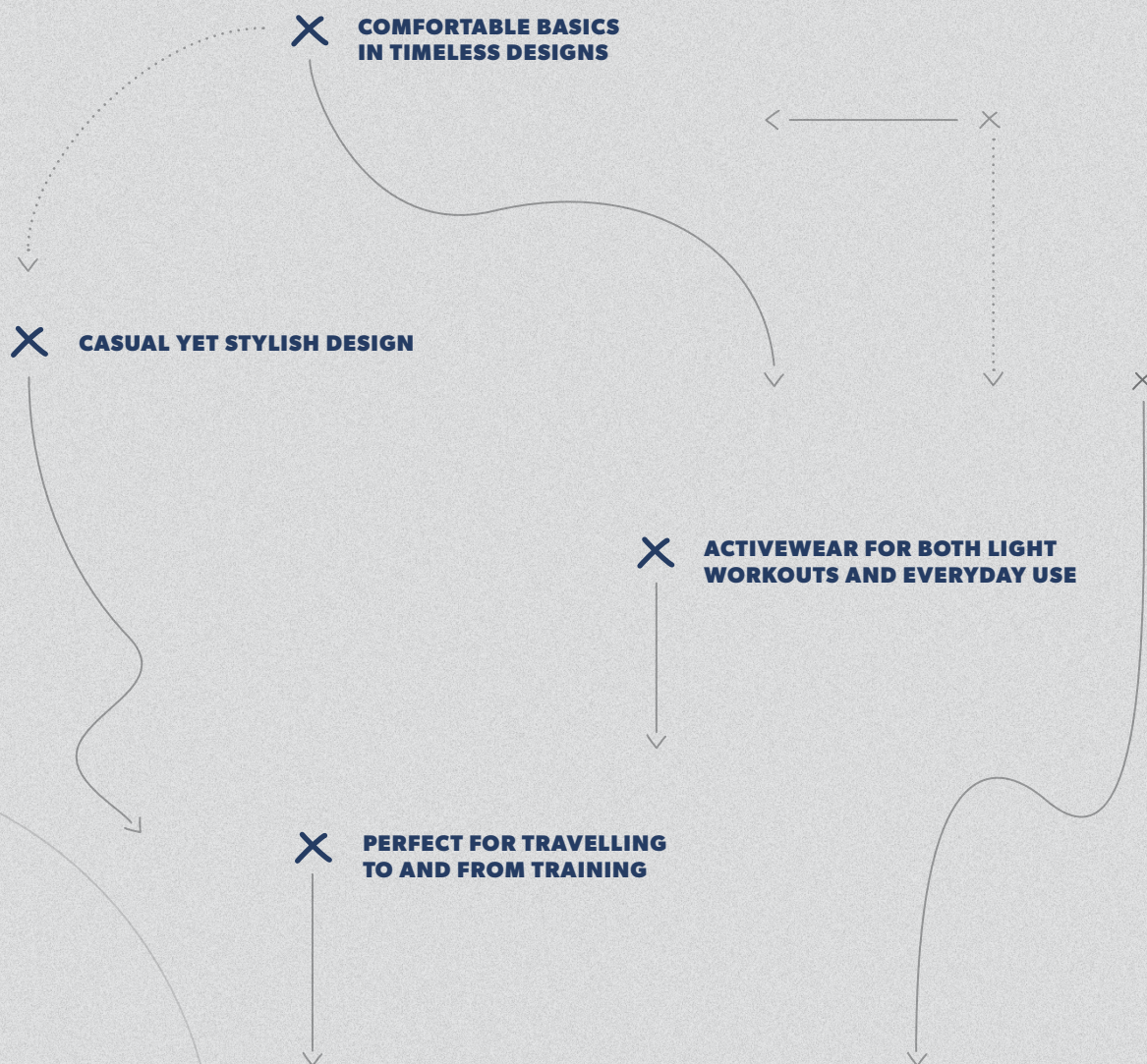


# LEISURE

## **The stylish yet casual leisure collections**

hummel offers a range of comfortable styles that combines versatile sportswear and athleisure trends with functional apparel for the everyday wardrobe. The styles are crafted from comfortable fabrics with active fits making them ideal for performance and

traveling – and perfect to wear to and from training – for the individual athlete and for teams. Consisting of timeless designs with multi opportunity styles, the hummel leisure collections call for active consumers who value comfortable yet stylish clothes that are trend-driven but easy to wear.





## HUMMEL GO COTTON T-SHIRT S/S

- 100% cotton
- Jersey fabric
- Waterbased printed logo and chevrons
- Regular fit

203567 : 116 128 140 152 164 176

203566 : S M L XL 2XL 3XL



## HUMMEL GO COTTON T-SHIRT WOMAN S/S

- 100% cotton
- Jersey fabric
- Waterbased printed logo and chevrons
- Regular fit

203440 : XS S M L XL 2XL



## HUMMEL GO COTTON LOGO T-SHIRT S/S

- 100% cotton
- Jersey fabric
- Waterbased printed logo
- Regular fit

203514 : 116 128 140 152 164 176

203513 : S M L XL 2XL 3XL



## HUMMEL GO COTTON LOGO T-SHIRT WOMAN S/S

- 100% cotton
- Jersey fabric
- Waterbased printed logo
- Regular fit

203518 : XS S M L XL 2XL





HUMMEL GO COTTON BERMUDA SHORTS

- 80% cotton, 20% polyester
- Sweat fabric
- Pockets
- Waterbased printed logo and chevrons
- Regular fit

204053 : 116 128 140 152 164 176  
203533 : S M L XL 2XL 3XL



HUMMEL GO COTTON BERMUDA SHORTS WOMAN

- 80% cotton, 20% polyester
- Sweat fabric
- Pockets
- Waterbased printed logo and chevrons
- Regular fit

203532 : XS S M L XL 2XL



HUMMEL GO POLY BERMUDA SHORTS

- 100% polyester
- Interlock fabric
- String in waist
- Waterbased printed logo and chevrons
- Regular fit

204052 : 116 128 140 152 164 176  
203528 : S M L XL 2XL 3XL



HUMMEL GO POLY BERMUDA SHORTS WOMAN

- 100% polyester
- Interlock fabric
- String in waist
- Waterbased printed logo and chevrons
- Regular fit

203529 : XS S M L XL 2XL





## HUMMEL GO COTTON SWEATSHIRT

- 80% cotton, 20% polyester
- Sweat fabric
- Waterbased printed logo and chevrons
- Regular fit

203506 : 116 128 140 152 164 176  
203505 : S M L XL 2XL 3XL



## HUMMEL GO COTTON SWEATSHIRT WOMAN

- 80% cotton, 20% polyester
- Sweat fabric
- Waterbased printed logo and chevrons
- Regular fit

203507 : XS S M L XL 2XL



## HUMMEL GO COTTON HOODIE

- Main: 80% cotton, 20% polyester / Lining: 100% polyester
- Main: Sweat fabric / Lining: mesh fabric
- Waterbased printed logo and chevrons
- Regular fit

203509 : 116 128 140 152 164 176  
203508 : S M L XL 2XL 3XL



## HUMMEL GO COTTON HOODIE WOMAN

- Main: 80% cotton, 20% polyester / Lining: 100% polyester
- Main: Sweat fabric / Lining: mesh fabric
- Waterbased printed logo and chevrons
- Regular fit

203510 : XS S M L XL 2XL





## HUMMEL GO COTTON LOGO SWEATSHIRT

- 80% cotton, 20% polyester
- Sweat fabric
- Waterbased printed logo
- Regular fit

203516 : 116 128 140 152 164 176

203515 : S M L XL 2XL 3XL



## HUMMEL GO COTTON LOGO SWEATSHIRT WOMAN

- 80% cotton, 20% polyester
- Sweat fabric
- Waterbased printed logo
- Regular fit

203519 : XS S M L XL 2XL



## HUMMEL GO COTTON LOGO HOODIE

- Main: 80% cotton, 20% polyester / Lining: 100% polyester
- Main: Sweat fabric / Lining: mesh fabric
- Waterbased printed logo
- Regular fit

203512 : 116 128 140 152 164 176

203511 : S M L XL 2XL 3XL



## HUMMEL GO COTTON LOGO HOODIE WOMAN

- Main: 80% cotton, 20% polyester / Lining: 100% polyester
- Main: Sweat fabric / Lining: mesh fabric
- Waterbased printed logo
- Regular fit

203517 : XS S M L XL 2XL





## HUMMEL GO COTTON ZIP HOODIE

- Main: 80% cotton, 20% polyester / Lining: 100% polyester
- Main: Sweat fabric / Lining: mesh fabric
- Waterbased printed logo and chevrons
- Regular fit

204231 : 116 128 140 152 164 176  
204230 : S M L XL 2XL 3XL



## HUMMEL GO COTTON ZIP HOODIE WOMAN

- Main: 80% cotton, 20% polyester / Lining: 100% polyester
- Main: Sweat fabric / Lining: mesh fabric
- Waterbased printed logo and chevrons
- Regular fit

204232 : XS S M L XL 2XL



## HUMMEL GO COTTON PANT

- 80% cotton, 20% polyester
- Sweat fabric
- Pockets
- Waterbased printed logo and chevrons
- Regular fit

203531 : 116 128 140 152 164 176  
203530 : S M L XL 2XL 3XL



## HUMMEL GO COTTON PANTS WOMAN

- 80% cotton, 20% polyester
- Sweat fabric
- Pockets
- Waterbased printed logo and chevrons
- Regular fit

204173 : XS S M L XL 2XL





HUMMEL GO COTTON POLO

- 90% cotton, 10% viscose
- Main: Piqué fabric / Rib: flat knit rib
- Placket with buttons CF
- Waterbased printed logo and chevrons
- Regular fit

203521 : 116 128 140 152 164 176  
203520 : S M L XL 2XL 3XL



HUMMEL GO COTTON POLO WOMAN

- 90% cotton, 10% viscose
- Main: Piqué fabric / Rib: flat knit rib
- Placket with buttons CF
- Waterbased printed logo and chevrons
- Regular fit

203522 : XS S M L XL 2XL





## CLASSIC BEE NOAH POLO

- 50% cotton, 50% polyester
- Pique fabric
- Embroidery logo
- Jacquard stripes in collar and sleeve hem
- Slit at side seams
- Regular fit

019146 : S M L XL 2XL 3XL



2001  
BLACK

2006  
GREY MELANGE

9001  
WHITE



## CLASSIC BEE COTTON TEE

- 95% cotton, 5% elastane
- Jersey fabric
- Waterbased print
- Regular fit

108467 : 128 140 152 164

008467 : S M L XL 2XL 3XL



1009  
BLACK IRIS

2006  
GREY MELANGE

2042  
BLACK/  
BLACK

9708  
WHITE/  
SHARKSKIN



## HMLJANE T-SHIRT S/S

- 95% cotton, 5% elastane
- Jersey fabric
- Waterbased print
- Regular fit

204569 : XS S M L XL 2XL



1009  
BLACK IRIS

2006  
GREY MELANGE

2042  
BLACK/  
BLACK

9708  
WHITE/  
SHARKSKIN





CLASSIC BEE AAGE ZIP JACKET

- 69% cotton, 29% polyester, 2% elastane
- Sweat fabric
- Polyester backside for moisture transportation
- Embroidery logo
- Chevron tape
- Zipper pockets
- Regular fit

033390 : S M L XL 2XL 3XL



CLASSIC BEE AAGE SHORTS

- 69% cotton, 29% polyester, 2% elastane
- Sweat fabric
- Polyester backside for moisture transportation
- Embroidery logo
- Chevron tape
- Fake fly
- Regular fit

010810 : S M L XL 2XL 3XL



CLASSIC BEE AAGE PANTS

- 69% cotton, 29% polyester, 2% elastane
- Sweat fabric
- Polyester backside for moisture transportation
- Embroidery logo
- Chevron tape
- Fake fly
- Regular fit

037110 : S M L XL 2XL 3XL



HMLGUY SWEATSHIRT

- 80% polyester, 15% viscose, 5% elastane
- Interlock fabric
- 3D printed logo and chevrons
- Dart at shoulder
- Regular fit

200176 : S M L XL 2XL 3XL





## HMLGUY ZIP HOOD

- 80% polyester, 15% viscose, 5% elastane
- Interlock fabric
- 3D logo and chevron
- String in hood
- Regular fit

200756 : 128 140 152 164

200175 : S M L XL 2XL 3XL



2001  
BLACK



2006  
GREY MELANGE



## HMLGUY ZIP JACKET

- 85% polyester 15% viscose 5% elastane
- Interlock fabric
- 3D printed logo and chevrons
- Zipper pockets
- Dart at shoulder
- Regular fit

200174 : S M L XL 2XL 3XL



2001  
BLACK



2006  
GREY MELANGE



## HMLGUY SHORTS

- 80% polyester, 15% viscose, 5% elastane
- Interlock fabric
- 3D printed logo and chevrons
- Invisible zipper pocket at back
- Regular fit

200178 : S M L XL 2XL 3XL



2006  
GREY MELANGE



## HMLGUY PANTS

- 80% polyester, 15% viscose, 5% elastane
- Interlock fabric
- 3D logo and chevrons
- Regular fit

200757 : 128 140 152 164

200177 : S M L XL 2XL 3XL



2001  
BLACK



2006  
GREY MELANGE





HMLCLIO ZIP JACKET

- 80% polyester, 15% viscose, 5% elastane
- Interlock fabric
- 3D logo and chevrons
- Zipper pockets
- Regular fit

200170 : XS S M L XL 2XL



HMLCLIO ZIP HOOD

- 80% polyester, 15% viscose, 5% elastane
- Interlock fabric
- 3D logo and chevrons
- Regular fit

200171 : XS S M L XL 2XL



HMLCLIO PANTS

- 80% polyester, 15% viscose, 5% elastane
- Interlock fabric
- 3D logo and chevrons
- Zipper pockets
- Regular fit

200173 : XS S M L XL 2XL



HMLTAYLOR TIGHTS

- 92% cotton, 8% elastane
- Jersey fabric
- Waterbased print
- Tight fit

203027 : XS S M L XL 2XL





## HMLJAMES ZIP JACKET

- 93% polyester, 7% elastane
- Main: Interlock fabric / Insert: Mesh fabric
- Waterbased print
- Zipper garage

- Invisible zipper pockets
- Regular fit
- Flexibility

203940 : 152 164

202951 : S M L XL 2XL 3XL



## HMLJAMES PANTS

- 93% polyester, 7% elastane
- Main: Melange Interlock fabric / Insert: mesh fabric
- Waterbased print
- Invisible zipper pockets

- Regular fit
- Flexibility
- Ventilation

203941 : 152 164

202952 : S M L XL 2XL 3XL



## HMLNATHAN ZIP JACKET

- 95% micropolyester, 5% elastane
- Interlock fabric
- Embroidery logo
- Zipper pockets
- Regular fit

200769 : 140 152 164 176

200627 : S M L XL 2XL



## HMLNATHAN PANTS

- 95% micropolyester, 5% elastane
- Interlock fabric
- Embroidery logo
- Zipper pockets
- No pockets in kids sizes
- Regular fit

200770 : 140 152 164 176

200629 : S M L XL 2XL





HMLJASMINE ZIP JACKET

- 90% polyester, 10% elastane
- Main: Melange interlock fabric / Insert: mesh fabric
- Waterbased print
- Zippergarage
- Invisible zipper pockets
- Regular fit
- Flexibility

203025 : XS S M L XL 2XL



HMLJASMINE PANTS

- 93% polyester, 7% elastane
- Main: Interlock fabric / Insert: mesh fabric
- Waterbased print
- Invisible zipper pockets
- Regular fit
- Flexibility
- Ventilation

203026 : XS S M L XL 2XL



HMLNELLY ZIP JACKET

- 95% micropolyester, 5% elastane
- Interlock fabric
- Embroidery logo
- Zipper pockets
- Regular fit

200765 : 140 152 164 176  
200626 : XS S M L XL



HMLNELLY PANTS

- 95% micropolyester, 5% elastane
- Interlock fabric
- Embroidery logo
- No pockets in kids sizes
- Regular fit

200768 : 140 152 164 176  
200628 : XS S M L XL





## CLASSIC BEE CI SEAMLESS TOP

- 52% polyamide, 42% polyester, 6% elastane
- Ultra stretchable fabric
- Tight fit
- Seamless
- Antibacterial
- BeeCool

019238 : XS-S M-L XL-2XL



1502  
BLACK MELANGE



8709  
OMBRE BLUE  
MELANGE



## CLASSIC BEE CI SEAMLESS TIGHTS

- 52% polyamide, 42% polyester, 6% elastane
- Ultra stretchable fabric
- Tight fit
- Seamless
- Antibacterial
- BeeCool

011336 : XS-S M-L XL-2XL



1502  
BLACK MELANGE



8709  
OMBRE BLUE  
MELANGE



## CLASSIC BEE WOMENS TECH SHORTS

- 66% cotton, 29% polyester, 5% elastane
- Sweat fabric
- Polyester on backside for moisture transportation
- Waterbased print
- Regular fit
- BeeCool

010760 : XS S M L XL 2XL



2001  
BLACK



2006  
GREY MELANGE



## CLASSIC BEE WOMENS TECH PANTS

- 66% cotton, 29% polyester, 5% elastane
- Sweat fabric
- Polyester on backside for moisture transportation
- Waterbased print
- Invisible zipper pocket
- Slim fit
- BeeCool

039720 : XS S M L XL 2XL



2001  
BLACK



2006  
GREY MELANGE



2007  
DARK GREY MELANGE





HMLSANDER JACKET

- Main: 100% polyester / Lining: 100% polyester / Padding: 100% polyester
  - Quilted woven fabric
  - Waterbased logo print
  - Elastic binding at sleeves and bottom hem
- Zipper garage at CF
  - Regular fit
  - Water repellent
  - Fluorine free



203470 : S M L XL 2XL 3XL



2001  
BLACK



2508  
BLACK MELANGE

HMLESKE JACKET

- Main: 100% polyester / Insert: 100% polyester / Lining: 100% polyester / Padding: 100% polyester
  - Woven main fabric
  - Insert: Mesh fabric bonded with fleece
  - Printed logo
  - Zipper pockets
- Placket with zipper garage at center front
  - Regular fit
  - Water repellent
  - Fluorine free



200493 : S M L XL 2XL 3XL



2001  
BLACK



8744  
SARGASSO SEA

HMLASSER JACKET

- Main: 75% nylon, 25% polyester / Insert: 100% polyester
  - Main: woven fabric / Insert: bonded fleece fabric
  - WP3000/MVP3000
  - 3D logo and chevrons
  - Placket with zipper garage at center front
- Regular fit
  - Water repellent
  - Waterproof
  - Breathability
  - Fluorine free

200495 : XS S M L XL 2XL 3XL



2508  
BLACK MELANGE



8997  
SARGASSO SEA  
MELANGE





## HMLSTELLA JACKET

- Main: 100% polyester / Lining: 100% polyester / Padding: 100% polyester-Quilted woven fabric
- Waterbased logo print
- Elastic binding at sleeves and bottom hem
- Zipper garage at CF
- Regular fit
- Water repellent
- Fluorine free

203472 : XS S M L XL 2XL



2001  
BLACK



2508  
BLACK MELANGE



## HMLBABETTE JACKET

- Main: 100% polyester / Insert: 100% polyester / Lining: 100% polyester / Padding: 100% polyester
- Woven main fabric
- Insert: Mesh fabric bonded with fleece
- Printed logo
- Zipper pockets
- Placket with zipper garage at center front
- Slim fit
- Water repellent
- Fluorine free

200492 : XS S M L XL 2XL



2001  
BLACK



8744  
SARGASSO SEA



## HMLDALIA JACKET

- Main: 75% nylon, 25% polyester / Insert: 100% polyester
- Main: woven fabric / Insert: bonded fleece fabric
- WP3000/MVP3000
- 3D logo and chevrons
- Placket with zipper garage at center front
- Slim fit
- Water repellent
- Waterproof
- Breathability
- Fluorine free

200494 : XS S M L XL 2XL



2508  
BLACK MELANGE



8997  
SARGASSO SEA  
MELANGE







↑  
hummel Go Cotton Sweatshirt Woman **203507**  
hummel Go Cotton Pant Woman **204173**  
Maria Mose Vestergaard, Team Esbjerg  
Kristina Liscevic, Team Esbjerg  
Emma Cecilie Nielsen, Team Esbjerg



LEISURE



↑  
hummel Go Cotton T-shirt SS Women **203440**  
Marit Røsborg Jacobsen, Team Esbjerg



→  
hummel Go Cotton Sweatshirt Woman **203507**  
Maria Mose Vestergaard, Team Esbjerg







→  
hummel Go Cotton Hoodie **203508**  
George Friend, Middlesbrough FC



←  
hummel Go Cotton Sweatshirt **203505**  
hummel Go Cotton Pant **203530**  
Dael Fry, Middlesbrough FC



↑  
hummel Go Cotton Polo **203520**  
Adam Clayton, Middlesbrough FC

→  
hummel Go Cotton Sweatshirt **203505**  
hummel Go Cotton Pant **203530**  
Dael Fry, Middlesbrough FC







RIKKE LÆNTVER  
SEVECKE  
BRØNDBY IF

FUNDAMENTAL TRAINING BIB 005002



# SOCKS & ACCESSORIES

## Perfect fundamentals for a good game

No matter the level and no matter the sport, players need the right fundamentals to ensure a top performance. From socks to wristbands, resin

gel to ball pumps and towels to gloves, our Socks & Accessories collection offers a wide range of basics – in all sizes and in a wide array of colours.

## X NECESSITIES FOR EVERY SPORT

## X FUNCTIONAL BASICS FOR ENHANCED SUPPORT AND PERFORMANCE

## X MULTIPLE COLOUR OPTIONS AND SIZES



## PRO FOOTBALL SOCK

- 82% polyamide, 6% polyester, 6% cotton, 6% elastane
- Moisture management
- Padded ankle protection
- Reinforced heel, toe and ankle section to help shock absorption
- Arch support
- Applies to UEFA and FIFA regulations
- Tight fit

201160 : 8 (32-35) 10 (36-40) 12 (41-45) 14 (46-48)



2114  
BLACK/  
WHITE



3946  
TRUE RED/  
WHITE



5115  
SPORTS YELLOW/  
BLACK



6131  
EVERGREEN/  
WHITE



7691  
TRUE BLUE/  
WHITE



8744  
SARGASSO SEA



9004  
WHITE/  
EVERGREEN



9124  
WHITE/  
BLACK



9368  
WHITE/  
TRUE BLUE



9402  
WHITE/  
TRUE RED



## ELEMENT FOOTBALL SOCK

- 70% polypropylene, 21% polyamide, 7% cotton, 2% elastane
- Moisture management
- Padded ankle protection
- Reinforced heel, toe and ankle sections to help shock absorption
- Arch support
- Airflow mesh
- Regular fit

204046 : 27-30 31-34 35-38 39-42 43-45 46-48



2114  
BLACK/  
WHITE



3489  
FIRE RED/  
WHITE



3946  
TRUE RED/  
WHITE



5115  
SPORTS YELLOW/  
BLACK



5168  
SPORTS YELLOW/  
TRUE BLUE



6131  
EVERGREEN/  
WHITE



7473  
ARGENTINA BLUE/  
WHITE



7691  
TRUE BLUE/  
WHITE



7724  
TRUE BLUE/  
SPORTS YELLOW



7929  
MARINE/  
WHITE



9004  
WHITE/  
EVERGREEN



9124  
WHITE/  
BLACK



9368  
WHITE/  
TRUE BLUE



9402  
WHITE/  
TRUE RED



## ELEMENT FOOTBALL SOCK FOOTLESS

- 62% polypropylene, 36% polyamide, 2% elastane
- Moisture management
- Elasticated Stirrup
- Airflow mesh
- Regular fit

203404 : 1 (JUNIOR) 2 (SENIOR)



2114  
BLACK/  
WHITE



3489  
FIRE RED/  
WHITE



5168  
SPORTS YELLOW/  
TRUE BLUE



6131  
EVERGREEN/  
WHITE



7691  
TRUE BLUE/  
WHITE



7724  
TRUE BLUE/  
SPORTS YELLOW



9124  
WHITE/  
BLACK





FUNDAMENTAL 3-PACK SOCK

- 80% cotton, 17% polyamide, 3% elastane
- Moisture Management
- Arch support

022140 : 8 (32-35) 10 (36-40) 12 (41-45) 14 (46-48)



2001  
BLACK



9001  
WHITE



3-PACK BASIC SOCK

- 80% cotton, 20% polyester
- Mid-calf length with contrasting chevrons

022030 : 8 (32-35) 10 (36-40) 12 (41-45) 14 (46-48)



2001  
BLACK



9001  
WHITE



ANKLE SOCK SMU

- 80% cotton, 17% polyester, 3% elastane
- Rib effect at mid-foot to give snug fit
- Size knitted into the sock

022129 : 8 (32-35) 10 (36-40) 12 (41-45) 14 (46-48)



2114  
BLACK/  
WHITE



2654  
CASTLE ROCK/  
BLACK



4067  
BRIGHT ROSE/  
WHITE



6597  
GREEN GECKO/  
BLACK



8367  
ATOMIC BLUE/  
WHITE



9124  
WHITE/  
BLACK





## ELITE INDOOR SOCK LOW

- 36% polypropylene, 42% polyamide, 8% polyester, 6% elastane
- Padded heel and toe for protective cushioning from high-impact pressure
- Moisture management
- Anti bacterial treatment in the heel and toe
- Arch support
- Airflow mesh
- Regular fit
- Antibacterial

204043 : 27-30 31-34 35-38 39-42 43-45 46-48



## ELITE INDOOR SOCK HIGH

- 35% polypropylene, 47% polyamide, 6% polyester, 6% cotton, 6% elastane
- Moisture management
- Anti bacterial treatment in the heel and toe
- Padded heel and toe for protective cushioning from high impact pressure
- Arch support
- Airflow mesh
- Regular fit
- Antibacterial

204044 : 27-30 31-34 35-38 39-42 43-45 46-48



## ELEMENT PERFORMANCE SOCK 2 PACK

- 84% polyamide, 5% polyester, 5% cotton, 6% elastane
- Moisture management
- Antibacterial treatment in the heel and toe
- Arch support
- Regular fit
- Antibacterial

204045 : 27-30 31-34 35-38 39-42 43-45 46-48



## ELITE COMPRESSION SOCK

- 93% polyamid, 7% elastane
- Moisture management
- Graduated Compression
- Muscle support
- Protective cushioning in the toe and heel
- Regular fit

203405 : 1 (25-31 CM) 2 (32-38 CM) 3 (39-44 CM) 4 (45-50 CM)





TRAINING HAT

- 50% wool, 50% acrylic knit
- Fold-up cuff and embroidered chevrons

089061 : ONE SIZE



TRAINING BEANIE

- 100% acrylic
- Embroidered chevrons

089441 : ONE SIZE



LIGHT WEIGHT PLAYER GLOVES

- 100% polyester
- Silicon-fused grip detail
- Embroidered chevrons

041441 : 2XS XS S M L XL



COLD WINTER PLAYER GLOVES

- 100% polyester fleece
- Silicon-fused grip detail
- Wristband-strap with velcro closure
- Embroidered chevrons

041442 : 2XS XS S M L XL





## BASIC CAP

- 100% polyester
- Light-weight cap
- Adjustable strap on back
- Airhole ventilation
- Buckle CB to adjust size

089066 : ONE SIZE



2001  
BLACK



## FUNDAMENTAL TRAINING BIB

- 100% polyester
- Mesh bib with contrasting seam binding
- Contrasting hummel print on center front

105002 : 8 (MINI)

005002 : S (JUNIOR) XL (SENIOR)



3062  
TRUE RED



5009  
NEON YELLOW



5179  
NEON ORANGE



6057  
NEON GREEN



7649  
NEON BLUE



9001  
WHITE



## OLD SCHOOL CAPTAINS BAND

- 94% polyester, 6% rubber
- Single colour armband with printed logo

099164 : ONE SIZE



5067  
FLOURECENT GREEN/  
BLACK



7258  
MARINE/  
SILVER



## 3-PACK HEADBAND

- 41% latex, 41% nylon, 18% polyester
- Elastic headbands with hummel chevrons

098153 : ONE SIZE



9475  
WHITE/  
BLACK/  
TRUE RED





## HUMMEL BALL PUMP

- Double action ball pump
- Flexible extendable tube
- Metal vinyl
- Integrated vinyl storage

099000 : ONE SIZE



2001  
BLACK



## OLD SCHOOL SMALL WRISTBAND

- 95% cotton, 5% lycra
- Terry loop sweatbands with embroidered logo
- Sort. 10 pcs per colour
- Price listed is per piece

099015 : ONE SIZE



2114  
BLACK/  
WHITE



3946  
TRUE RED/  
WHITE



6101  
SPORTS GREEN/  
WHITE



7691  
TRUE BLUE/  
WHITE



8744  
SARGASSO SEA



9124  
WHITE/  
BLACK



## OLD SCHOOL BIG WRISTBAND

- 95% cotton, 5% lycra
- Terry loop sweatbands with embroidered logo
- Sort. 10 pcs per colour
- Price listed is per piece

099014 : ONE SIZE



2114  
BLACK/  
WHITE



3946  
TRUE RED/  
WHITE



6101  
SPORTS GREEN/  
WHITE



7691  
TRUE BLUE/  
WHITE



8744  
SARGASSO SEA



9124  
WHITE/  
BLACK



## OLD SCHOOL SMALL TOWEL

- 100% cotton terry
- Old school jaquard knitted towel with logo



025064 : ONE SIZE



2001  
BLACK



8744  
SARGASSO SEA

## OLD SCHOOL BIG TOWEL

- 100% cotton terry
- Old school jaquard knitted towel with logo



025065 : ONE SIZE



2001  
BLACK



8744  
SARGASSO SEA



---

## HUMMEL WATERBOTTLE

- 100% Polypropylene
- 600 ml
- Drip free spout

205345 : ONE SIZE

---



2001  
BLACK



---

## HUMMEL WATERBOTTLE CARRIER

- Carrier for 6 bottles

205346 : ONE SIZE

---



2001  
BLACK



---

## HUMMEL RE-GRIP

- Contents: Acrylic Resin Emulsion and water
- For treatment of hummel grip handballs
- Price listed is per piece
- Sort. 12 pcs.

205347 : ONE SIZE

---



9001  
WHITE



---

## HUMMEL VALVE OIL

- Use before inflating your hummel ball
- 1-2 drops in valve to avoid leakage/drying valve
- Price listed is per piece
- Sort. 5 pcs.

099299 : ONE SIZE

---



9001  
WHITE



---

## HUMMEL RESIN REMOVER

- Removes all types of resin
- Creamy consistency
- Price listed is per piece
- Sort. 4 pcs.

099298 : ONE SIZE

---



9001  
WHITE





**HUMMEL RESIN GEL SMALL**

- Contents: nature resin, vegetable oils and thickening agent
- Price listed is per piece
- Sort. 8 pcs.

099297 : ONE SIZE



9001  
WHITE



**HUMMEL RESIN GEL BIG**

- Contents: nature resin, vegetable oils and thickening agent
- Price listed is per piece
- Sort. 4 pcs.

099303 : ONE SIZE



9001  
WHITE



**HUMMEL RESIN NATURAL SMALL**

- Contents: nature resin, vegetable oils
- Price listed is per piece
- Sort. 8 pcs.

099296 : ONE SIZE



9001  
WHITE



**HUMMEL RESIN NATURAL BIG**

- Contents: nature resin, vegetable oils
- Price listed is per piece
- Sort. 4 pcs.

099302 : ONE SIZE



9001  
WHITE





**JENS MARTIN GAMMELBY**  
BRØNDBY IF

AUTHENTIC CHARGE SPORTS BAG **205122**

**hummel**



# EQUIPMENT BAGS

## Functional bags for everyone

Functional and versatile bags are a must for every player and athlete. hummel offers a variety of designs, sizes and colours – all with a variety of functional details. They feature handles and/or

straps for easy carrying, large and small compartments with and without zippers, quality print, compression straps for adjustable sizing and waterproof, fold-over raincoats.



**FUNCTIONAL BAGS AT AN AFFORDABLE PRICE**



**COMPRESSION STRAPS AND HANDLES FOR ADJUSTABLE SIZING**



**WATERPROOF FOLD-OVER RAINCOATS**



**A VARIETY OF COMPARTMENTS FOR EVERY NEED**



## TECH MOVE SPORTS BAG

- 100% tarpaulin / Lining: 100% polyester
- Printed logo
- Adjustable shoulder strap with clip for carrying behind your back
- Padded shoulder support
- Inside pocket for wet storage

- Inside & outside zip pocket
- Carry handles
- M Size: L50 x W28 x H23 cm, 33 liter - Max weight: 10 kg
- L Size: L60 x W33 x H25 cm, 50 liter - Max weight: 13 kg



200919 : M L



2001  
BLACK

8744  
SARGASSO SEA

## AUTHENTIC CHARGE SOCCER BAG

- 100% polyester, woven fabric
- Lining: 100% Polyester
- Printed logo and chevrons
- Diagonal coated contrast for water repellency
- Hidden piping detail
- Bottom compartment with room for shoes or wet items

- Adjustable shoulder strap
- Carry handles with padded handle gathering
- Inside zip pocket
- S Size: L41 x H35 x W26 cm, 37 liter - Max weight: 6 kg
- L Size: L53 x H40 x W31 cm, 65 liter - Max weight: 10 kg



205123 : S L



2001  
BLACK

3062  
TRUE RED

7045  
TRUE BLUE

## AUTHENTIC CHARGE SPORTS BAG

- 100% polyester, woven fabric
- Lining: 100% Polyester
- Printed logos and chevrons
- Diagonal coated contrast for water repellency
- Hidden piping detail
- Bottom stabilizer and inside zip pocket
- Adjustable shoulder strap

- Carry handles with padded handle gathering (except size XS)
- End pocket for ball (except size XS)
- XS Size: L40 x W20 x H23 cm, 20 liter - Max weight: 4 kg
- S Size: L50 x W24 x H26 cm, 31 liter - Max weight: 6 kg
- M Size: L60 x W27 x H28 cm, 45 liter - Max weight: 9 kg
- L Size: L65 x W32 x H33 cm, 68 liter - Max weight: 12 kg



205122 : XS S M L



2001  
BLACK

3062  
TRUE RED

7045  
TRUE BLUE

8744  
SARGASSO SEA

## CORE SPORTS BAG

- 100% polyester, woven fabric with PU coating on backside
- Lining: 100% Polyester
- Printed logos and chevrons
- Bottom stabilizer and inside zip pocket
- Carrying handles
- Adjustable shoulder strap

- Shoulder protective pad
- End zip pocket
- XS: Size: L40 x W22 x H23 cm, Max weight 4 KG = 20 L
- S: Size: L50 x W24 x H26 cm, Max weight 6 KG = 31 L
- M: Size: L60 x W27 x H28 cm, Max weight 9 KG = 45 L
- L: Size: L65 x W32 x H33 cm, Max weight 12 KG = 69 L



204012 : XS S M L



2001  
BLACK

2006  
GREY MELANGE

3081  
TRUE RED/  
BLACK

7079  
TRUE BLUE/  
BLACK



## TECH MOVE BACK PACK

- 100% polyester / Lining: 100% polyester
- Printed logo and chevrons
- Top loading with flap and drawstring closure
- Zip pocket in top flap
- Laptop compatible
- Padded backside and back straps

- Expandable pockets at both sides
- 2 small front pockets
- Size: H42 x W32 x D19 cm, 26 liter - Max weight: 12 kg



### 200920 : ONE SIZE



2001  
BLACK

8744  
SARGASSO SEA

## AUTHENTIC CHARGE BACK PACK

- 100% polyester, woven fabric
- Lining: 100% Polyester
- Printed logos and chevrons
- Diagonal coated contrast for water repellency
- Hidden piping detail
- Laptop compatible

- Padded backside and backstraps
- Adjustable chest strap
- Stretchable mesh side pockets
- Carry handle
- Size: H42 x W30 x D17,5 cm, 22 liter - Max weight: 8 kg



### 205124 : ONE SIZE



2001  
BLACK

8744  
SARGASSO SEA

## AUTHENTIC CHARGE BALL BACK PACK

- 100% polyester
- Lining: 100% Polyester
- Printed logos and chevrons
- Coated contrast for water repellency
- Hidden piping detail
- Laptop compatible
- Padded backside and backstraps

- Adjustable chest strap
- Expandable side pockets at both sides
- Small front pocket
- Mesh net for ball storage in front compartment
- Carry handle
- Size: H42 x W30 x D15 cm, 19 liter - Max weight: 8 kg



### 205125 : ONE SIZE



2001  
BLACK

8744  
SARGASSO SEA



## AUTHENTIC CHARGE TEAM SPORTS BAG

- 100% polyester, woven fabric
- Lining: 100% polyester
- Printed logos and chevrons
- Diagonal coated contrast for water repellency
- Hidden piping detail
- Bottom stabilizer
- Adjustable shoulder strap with padded shoulder protection
- Carry handles with padded handle gathering
- Size: L80 x W42 x H35 cm, 118 liter - Max weight: 25 kg



205126 : ONE SIZE



2001  
BLACK

## AUTHENTIC CHARGE TROLLEY

- 100% polyester, woven fabric
- Lining: 100% polyester
- Printed logo and chevrons
- Piping detail
- 2 inside mesh compartments (only 1 mesh compartment in size S)
- Carrying handles with padded handle gathering
- (except size S)
- Extension handle
- Two wheel trolley option
- S Size: L55 x W35 x H23 cm, 44 liters - max weight 10 kg
- M Size: L60 x W35 x H31 cm, 65 liters - max weight 14 kg
- L Size: L75 x W35 x H34 cm, 89 liters - max weight 17 kg



205127 : S M L



2001  
BLACK

## AUTHENTIC CHARGE GYM BAG

- 100% polyester, woven fabric
- Lining: 100% polyester
- Printed logo & chevrons
- Drawstring closure & backstraps
- Zip pocket
- Size: H44 x W35 x D3 cm, 5 liter - Max weight 5 kg



200918 : ONE SIZE



2001  
BLACK



6102  
EVENING PRIMROSE



8744  
SARGASSO SEA

## CORE GYM BAG

- 100% polyester
- Drawstring closure and backstraps
- Screen printed hummel logo and chevrons
- Size: H44 x W35 x D6 cm, 5 liter - Max weight: 5 kg



204959 : ONE SIZE



2001  
BLACK



## AUTHENTIC CHARGE BALL BAG

- 100% polyester, woven fabric
- Mesh
- Printed logo and chevrons
- Drawstring for closure
- Fabric bottom with piping detail
- Size: H60 X D53, 132 liter - Max weight: 8 kg
- Fits 10 footballs

200915 : ONE SIZE



2001  
BLACK



## HUMMEL BALL NET

- 100% polyethylene
- Name tag: 100% polyester, woven fabric
- Drawstring for closure
- Name tag attached to string
- Fits 19 footballs
- Max weight: 9kg

040918 : ONE SIZE



2250  
BLACK/  
SILVER



## AUTHENTIC CHARGE HANDBALL BAG

- 100% polyester, woven fabric with PU coating on backside
- Lining: 100% polyester
- Printed logos and chevrons
- Adjustable detachable shoulder strap
- Zip opening
- Carrying handle
- Fits a size 3 handball

204544 : ONE SIZE



2001  
BLACK



## AUTHENTIC TOILETRY BAG

- 100% polyester, woven fabric
- Lining: 100% polyester
- Piping detail
- Printed logo
- Opens completely with hook for hanging
- Inside mesh pocket
- Inside zip pocket
- Carrying handle
- 4,3 liter
- Max weight: 3 kg
- H21 \* W23 \* D9 cm

040965 : ONE SIZE



2250  
BLACK/  
SILVER





# HANDBALL

**From professional to practice balls, hummel offers a diverse range for all kinds of players and teams.**

Reliable handballs with predictable flight and a good bounce are essential. hummel offers a

competitive range of quality handballs – from high-performance match balls to training balls for children. All handballs are made from durable PU (Polyurethane). Most of the balls also feature these three crucial elements:

✕ **LATEX BLADDER WITH AIRTRAP VALVE FOR AN AIRTIGHT BALL**



CONCEPT PRO 203785

✕ **WOVEN POLY/COTTON LINING THAT STABILIZES AND ADJUSTS SOFTNESS/WEIGHT**



✕ **AIRTOUCH CUSHIONING FOR EXTRA SOFTNESS AND BOUNCE**





## HYBRID BALLS



### **STORM PRO 2.0**

#### ***High performance hybrid match ball***

This white hybrid handball is machine stitched and glued together for a super soft and comfortable feel. A professional handball for the skillful player.



### **STORM PRO**

#### ***High performance match & training ball***

This glued hybrid-ball is created for extra softness and speed. This elite handball has IHF approval and works well for playful players with lots of tricks.

## HAND STITCHED BALLS



### **CONCEPT PRO**

#### ***The professional match ball***

Approved by the IHF, this elite ball for professional players has a spongy surface for perfect grip.



### **CONCEPT**

#### ***The professional training ball***

With a slightly thinner PU, the Concept ball is a professional ball suitable for both elite training and high-level matches.



### **ELITE GRIP**

#### ***High performance sticky match and training ball***

A new sticky grip technology ensures a sticky surface – to replace resin. The handball of the resin free future is here. Suited for elite players for both match and training.



### **ELITE**

#### ***High Performance Match and Training ball***

With its soft surface, the Elite ball is a favourite among elite female and youth players who use it as both a match and training ball.



### **PREMIER GRIP**

#### ***Sticky match and training ball***

A new sticky grip technology ensures a sticky surface – to replace resin. With a soft layer of foam this is the ball for quick youth players who value hard balls.



### **PREMIER**

#### ***Match and Training ball***

With a soft layer of foam instead of the AirTouch cushioning, this is the ball for the quick youth players who value hard balls.



### **ARENA**

#### ***Match and Training ball***

Entry-level training ball at an affordable price. Not suitable for resin use and therefore mostly a training ball.



### **ENERGIZER**

#### ***Basic training gball***

This machine stitched handball is designed to last for countless training hours in the training hall. Very suitable for resin, this makes the perfect basic training ball.



### **KIDS**

#### ***Specially created for children***

With the soft AirTouch surface, this children's ball is created with the smallest players in mind. Not suitable for resin use, it is a durable ball with good grip.



### **STREET PLAY**

#### ***Street handball for active play and training***

This fun street handball is stuffed with padding and has a PU surface, which makes it very soft and easy to squeeze. The ideal ball for active play and training both indoors and outdoors. Not suitable for resin use.

## RUBBER & FOAM BALLS



### **BEACH**

#### ***Beach handball for match and training***

This rubber based handball is developed to meet the very specific requirements of beach handball. Suited for both match and training.



### **EASY KIDS**

#### ***Rubber handball for active play and training***

The EASY KIDS handball is made of rubber which gives it a soft surface and makes it easy to grab. The ideal handball for children who want to become familiar with the sport of handball. Not suitable for resin use.



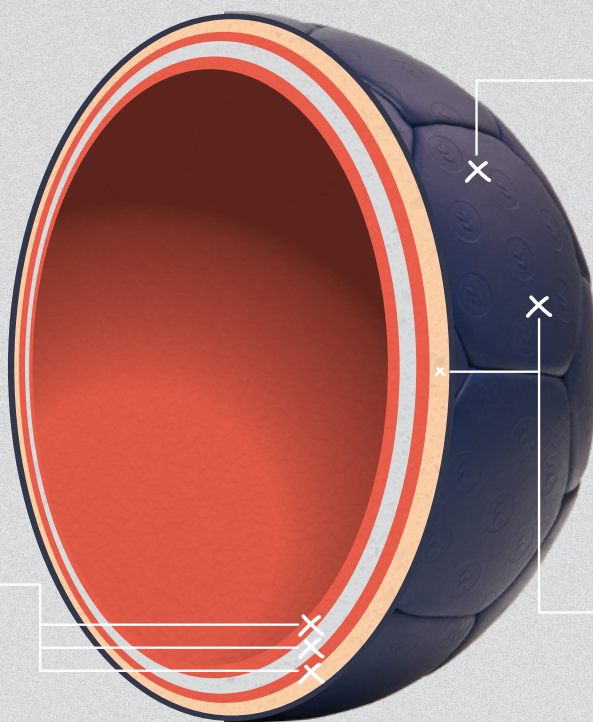
### **SPUME KIDS**

#### ***Foam handball for active play and training***

This squeeze kids handball made of foam is extremely lightweight and easy to grab. The perfect ball for children's training and play without resin use. who value hard balls.



## HYBRID HANDBALLS



### STRONG HYBRID CONSTRUCTION

Hybrid handballs are extra strong and durable. All PU hexagons are machine-stitched and glued together before being hardened under compression giving a super smooth surface and a perfect roundness.

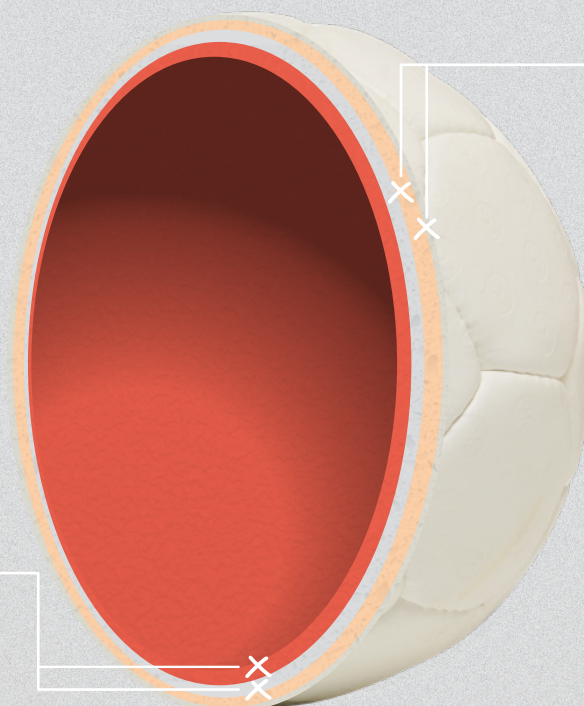
### UNIQUE DOUBLE BLADDER CONSTRUCTION

Inner and outer rubber bladders reinforced by a cotton and polyester lining for a perfect mix of bounce and stability. The inner bladder makes your ball vivid and bouncy, while the unique second bladder takes the bounce to new heights!

### THICK FOAM-BACKED PU SURFACE

With Air Touch foam to back a thick PU surface, you're sure to experience extra softness and a better grip. The PU of Storm Pro has even been upgraded with a microfiber padding providing a whole new dimension of softness.

## REGULAR HANDBALLS



### FOAM-BACKED PU SURFACE

All PU hexagons are hand-stitched and backed with foam of different thicknesses depending on the type of ball best suited for your game plan.

### TRADITIONAL RUBBER BLADDER

Inner rubber bladder covered by a white cotton and polyester lining giving you a great mix of bounce and stability when you set your ball in motion.



# HANDBALL INFLATION GUIDE

## PREPARATION

During wintertime, we suggest to store the handballs at room temperature (20 – 25°C) for minimum 24 hours before the first inflation in order to secure optimal softness, shape and grip.

## VALVE OIL

Drip 1 – 2 drops of hummel valve oil into the valve.  
It is important that valve-oil is used at every inflation as it makes the valve seal properly.

## INFLATE

Position the valve upwards and insert the inflation needle straight into the valve. Always use a long pump needle to ensure the needle does not damage the valve or the bladder.

## CHECK PRESSURE

- Inflate the ball to the recommended pressure.
- Recommended pressure is printed on the ball near the valve.
- Inflate slowly to allow the ball to gain its correct shape. Rapid inflation can damage the bladder.
- Use a pressure gauge to check the pressure of the ball.

# HANDBALL MAINTENANCE GUIDE

## BEFORE EACH INFLATION

Always drip 1 – 2 drops of hummel valve oil into the valve before inflation to ensure that it seals properly.

## STORAGE

Store the handball in a ventilated room at 20 – 25°C.

# WEIGHT AND CIRCUMFERENCE OF HANDBALLS

SIZE	CIRCUMFERENCE	WEIGHT	RECOMMENDED PRESSURE (BAR)
3	58—60 CM	425—435 G	0,3
2	54—56 CM	325—335 G	0,3
1,5	52—54 CM	320—330 G	0,3
1	50—52 CM	290—300 G	0,3
0	46—49 CM	225—235 G	0,4
0.0	44—46 CM	180—200 G	0,4



## HMLSTORM PRO 2.0

- 100% PU
- IHF approved
- High performance hybrid match ball
- Microfiber PU
- Chevron surface
- Air-touch foam
- Extra softness
- Latex double bladder
- Air-trap valve
- Suitable for resin
- 26 panels gives smoother surface
- Lighter/Easier feel when played
- 2 years guarantee on glue and shape

203596 : 2 3



9134  
WHITE/  
RED



## HMLSTORM PRO

- 100% PU
- IHF approved
- High performance hybrid match ball
- Microfiber PU
- Chevron surface
- Air-touch foam
- Extra softness
- Latex bladder
- Air-trap valve
- Suitable for resin
- Lighter/Easier feel when played
- 2 years guarantee on glue and shape

203597 : 2 3



7259  
BLUE/  
YELLOW



## HMLCONCEPT PRO

- 100% PU
- IHF approved
- High performance match ball
- Microfiber PU
- Chevron surface
- Air-touch foam
- Latex bladder
- Air-trap valve
- Suitable for resin
- 2 years guarantee on stitching and shape

203785 : 2 3



9272  
WHITE/  
TURQUOISE



## HMLCONCEPT

- 100% PU
- High performance match ball
- Microfiber PU
- Chevron surface
- Air-touch foam
- Latex bladder
- Air-trap valve
- Suitable for resin
- 2 years guarantee on stitching and shape

203601 : 2 3



6401  
GREEN/  
BLUE





## HMLELITE GRIP

- 100% PU
  - Match and training ball
  - Chevron surface
  - Air-touch foam
  - Latex bladder
  - Air-trap valve
- Sticky surface
  - Leaves no sticker traces
  - 2 years guarantee on stitching and shape

203599 : 2 3



5995  
SAFETY YELLOW/  
GREY



## HMLELITE

- 100% PU
  - High performance match ball
  - Chevron surface
  - Air-touch foam
  - Latex bladder
- Air-trap valve
  - Suitable for resin
  - 2 years guarantee on stitching and shape

203600 : 1,5 2 3



3148  
RED/  
WHITE

5999  
SAFETY YELLOW/  
TURQUOISE

7156  
BLUE/  
WHITE



## HMLPREMIER GRIB

- 100% PU
  - Match and training ball
  - Chevron surface
  - Soft foam
  - Latex bladder
- Air-trap valve
  - Sticky surface
  - Leaves no sticker traces
  - 2 years guarantee on stitching and shape

204157 : 1 2 3



5112  
YELLOW/  
WHITE



## HMLPREMIER

- 100% PU
  - Match and training ball
  - Chevron surface
  - Soft foam
  - Latex bladder
- Air-trap valve
  - Suitable for resin
  - 2 years guarantee on stitching and shape

203602 : 1 2 3



7772  
BLUE/ORANGE/  
TURQUOISE





## HMLARENA

- 100% PU
- Training ball
- Chevron surface
- Soft foam
- Latex bladder
- Air-Trap valve
- Not suitable for resin

203598 : 2 3



9241  
WHITE/ RED/  
BLUE



## HMLENERGIZER HB

- 100% PU
- Training ball
- Chevron surface
- Soft foam
- Latex bladder
- Air-Trap valve
- Suitable for resin
- 2 years guarantee on stitching and shape

204156 : 0 1 2 3



0361  
ORANGE/  
BLUE



## HMLBEACH

- 100% rubber
- Match and training ball
- Soft rubber surface
- Not suitable for resin

203604 : 2 3



3148  
RED/  
WHITE

7156  
BLUE/  
WHITE



## HMLSTREET PLAY

- 100% PU
- Active play and training ball
- Soft surface
- Not suitable for resin
- Stuffed with padding
- Very soft and easy to squeeze
- Suitable for both indoor and outdoor use

203607 : 0.0 0



6000  
SAFETY YELLOW/  
BLUE NIGHT





## HMLKIDS

- 100% PU
  - Match and training ball
  - Chevron surface
  - Air-touch foam
  - Latex bladder
- Air-trap valve
  - Not suitable for resin
  - 2 years guarantee on stitching and shape

203603 : 0.0 0 1



3028  
PINK/  
YELLOW

5307  
GREEN/  
YELLOW



## HMLEASY KIDS

- 100% rubber
- Active play and training ball
- Soft rubber surface
- Not suitable for resin

203606 : 0.0 0 1



4110  
ORANGE/  
WHITE



## HMLSPUME KIDS

- 100% PU foam
- Active play and training foam ball
- Soft foam
- Easy to squeeze
- Light and durable

203605 : 0.0 0



7018  
TURQUOISE/  
WHITE





# FOOTBALL

## **A broad range of footballs for professionals and amateurs alike.**

From professional, FIFA-approved match balls to futsal balls and balls for children, hummel offers a wide range of carefully developed footballs. Many

feature special features like AirTouch technology for soft cushioning and AirTrap latex bladders for responsive, light and airtight balls. All balls are designed with durability in mind, whether they're professional, indoor or practice balls.

✕ **FIFA-APPROVED MATCH BALLS**

✕ **AIRTRAP LATEX BLADDER FOR AIRTIGHTNESS AND LIGHTNESS**

CONCEPT+ 091825



✕ **AIRTOUCH CUSHIONING FOR SOFTNESS**

✕ **HIGH-PERFORMANCE MATCH, TRAINING AND FUTSAL BALLS**



## THERMO BONDED BALLS



### **BLADE PLUS**

#### ***The premium thermo bonded ball***

Approved by FIFA, this thermo bonded ball is the top-level bonded ball. With a coarse surface, it's an elite ball perfect for professional matches.



### **STORM**

#### ***Match & Training ball with plenty of bounce***

With its smooth surface and EVA foam, this ball has lots of bounce and energy which makes it suitable for high-level games.

## HYBRID BALLS



### **STORM LIGHT**

#### ***Speciality ball for children***

This hybrid ball has a soft EVA foam for softness. Due to its lightness, it's perfect for children and youth players.



### **STORM ULTRA LIGHT**

#### ***Ultra light ball for children***

Even lighter than the Storm Light, the Storm Ultra-Light caters to beginners and young players who want to practice their ball skills.

## HAND STITCHED BALLS



### **CONCEPT+**

#### ***The top-level professional ball***

The absolute top-level ball, which carries FIFA approval. With a microfiber surface for flexibility and control, this hand-sewn match ball is a favourite among pros.



### **ELITE**

#### ***High performance match & training ball***

With its slightly stiffer surface, the Elite ball feels a bit lighter than Concept+. It is perfect for seniors and youth players in both training and matches.



### **PREMIER ULTRA LIGHT**

#### ***The light match & training ball***

Even lighter than the Premier Light, the low weight makes this ball well-suited to beginners practicing on all surfaces.



### **PREMIER**

#### ***A durable ball for junior players***

Especially popular among high-level junior players, this durable ball can be used on both grass and artificial turfs.



### **PREMIER LIGHT**

#### ***A light ball for juniors and children***

This light speciality ball makes it easier for children and junior players to practice their skills on grass, artificial turf and indoors.



### **ENERGIZER**

#### ***Leisure play & game ball***

With a durable and soft material, the Energizer is designed for playful games and leisure at school, at home and indoors.



### **FUTSAL**

#### ***The speciality futsal ball***

Created especially for the indoor sport futsal, this heavy ball is also the perfect trick ball. Can be used indoors or on outdoor futsal fields.



## INNER BLADDER

Inner rubber bladder giving vivacity and bounce to the ball and explosivity to your game.

## MOLDABLE FOAM

Foam layer with a moldable effect making it either soft or hard depending on the type of ball best suited for your game plan.



## WHITE LINING

White lining consisting of cotton and polyester pads glued on top of the rubber bladder to give stability and make the ball perfectly round.

## RESISTANT PU SURFACE

Finished off with a resistant PU surface, the hummel football is ready for play in any type of weather and feels absolutely perfect in the hands of any goalkeeper.



# FOOTBALL INFLATION GUIDE

## PREPARATION

During wintertime we suggest to store the footballs at room temperature (20 – 25°C) for minimum 24 hours before the first inflation in order to secure optimal softness and shape.

Unfold the football with both hands and shake the bladder free.

## VALVE OIL

Drip 1 – 2 drops of hummel valve oil into the valve. It is important that valve-oil is used at every inflation as it makes the valve seal properly.

## INFLATE

Position the valve upwards and insert the inflation needle straight into the valve.  
Always use a long pump needle to ensure the needle does not damage the valve or the bladder.

## CHECK PRESSURE

- Inflate the ball to the recommended pressure.
- Recommended pressure is printed on the ball near the valve.
- Inflate slowly to allow the ball to gain its correct shape. Rapid inflation can damage the bladder.
- Use a pressure gauge to check the pressure of the ball.

# FOOTBALL MAINTENANCE GUIDE

## BEFORE EACH INFLATION

Always drip 1 – 2 drops of hummel valve oil into the valve before inflation to ensure that it seals properly.

## STORAGE

Store the ball at reduced pressure in a dry ventilated room at 20 – 25°C.

## CLEANING AND DRYING

After use clean the football in mild soapy water and rinse with water. Then wipe the ball off with a towel and let it fully dry in a dry, airy place at 20 – 25°C.

Never dry the ball on or near a heating device.

# WEIGHT AND CIRCUMFERENCE OF FOOTBALLS

FOOTBALL	SIZE	CIRCUMFERENCE	WEIGHT	RECOMMENDED PRESSURE (BAR)
<b>BLADE</b>	5	68,5 – 69,5 cm	420 – 445 g	0,8 – 1,0
<b>STORM</b>	5	68 – 70 cm	410 – 450 g	0,8 – 1,0
	4	63,5 – 66 cm	350 – 390 g	0,8 – 1,0
<b>STORM LIGHT</b>	5	68 – 70 cm	340 – 360 g	0,6
	4	63,5 – 66 cm	315 – 335 g	0,6
<b>STORM ULTRA LIGHT</b>	5	68 – 70 cm	285 – 320 g	0,6
	4	63,5 – 66 cm	285 – 310 g	0,6
	3	62 – 63,5 cm	280 – 300 g	0,6

<b>CONCEPT+</b>	5	68,5 – 69,5 cm	420 – 445 g	0,8 – 1,0
	4	63,5 – 66 cm	350 – 390 g	0,8 – 1,0
<b>ELITE &amp; PREMIER</b>	5	68 – 70 cm	410 – 450 g	0,7 – 0,8
	4	63,5 – 66 cm	350 – 390 g	0,7 – 0,8
<b>PREMIER LIGHT</b>	5	68 – 70 cm	340 – 360 g	0,6
	4	63,5 – 66 cm	315 – 335 g	0,6
<b>PREMIER ULTRA LIGHT</b>	5	68 – 70 cm	285 – 320 g	0,6
	4	63,5 – 66 cm	285 – 310 g	0,6
	3	62 – 63,5 cm	280 – 300 g	0,6
<b>ENERGIZER</b>	5	68 – 70 cm	410 – 450 g	0,6
	4	63,5 – 66 cm	350 – 390 g	0,6
<b>FUTSAL</b>	4	62 – 64 cm	400 – 440 g	0,6



## BLADE PLUS FB

- FIFA approved professional quality match football
- Textured PU
- Air-Touch foam
- Air-Trap bladder
- Thermally bonded panels
- Minimal water uptake
- Suitable for grass and artificial pitch

091834 : 5



9808  
WHITE/VINTAGE  
INDIGO/PNK



## STORM FB

- Match and training football
- Shiny PU
- EVA foam
- Air-Trap bladder
- Thermally bonded panels
- Durable
- Minimal water uptake
- Suitable for grass and artificial pitch

091833 : 4 5



9828  
WHITE/VINTAGE  
INDIGO/RED



## STORM LIGHT FB

- Specially developed for young players to finely tune their football skills
- Official size - but lighter
- Shiny PU
- Soft EVA foam
- Air-Trap bladder
- Durable
- Minimal water uptake
- Suitable for grass, artificial and indoor pitches

091835 : 4 5



9811  
WHITE/VINTAGE  
INDIGO/ORANGE



## STORM ULTRA LIGHT FB

- Specially developed for kids to finely tune their football skills
- Official size - but lighter
- Shiny PU
- Soft EVA foam
- Air-Trap bladder
- Durable
- Minimal water uptake
- Suitable for grass, artificial and indoor pitches

091836 : 3 4 5



9814  
WHITE/VINTAGE  
INDIGO/TURQUOISE





## CONCEPT PLUS FB

- FIFA approved professional quality match football with unique playing properties
- Microfibre PU with high flexibility and firmness for optimal control under all conditions
- Air-Trap bladder which allows the ball to retain air for longer
- Specially developed lining which gives optimal

- appearance and bounce
- Hand-stitched
- Durable
- Suitable for grass and artificial pitch
- Warranty: 2 year stitch and shape guarantee
- Only size 5 is FIFA approved

091825 : 4 5



9808  
WHITE/VINTAGE  
INDIGO/PNK



## ELITE FB

- High performance match and training football
- PU with soft surface for good control under all conditions
- Air-Trap bladder which allows the ball to retain air for longer
- Specially developed lining which gives optimal

- appearance and bounce
- Hand-stitched
- Durable
- Suitable for grass and artificial pitch
- Warranty: 2 year stitch and shape guarantee

091826 : 4 5



9809  
WHITE/VINTAGE  
INDIGO/PURPLE



## PREMIER FB

- Match and training football
- Shiny PU
- Air-Trap bladder which allows the ball to retain air for longer
- Specially developed lining which gives optimal appearance and bounce

- Hand-stitched
- Durable
- Suitable for grass and artificial pitch
- Warranty: 2 year stitch and shape guarantee

091827 : 4 5



9810  
WHITE/VINTAGE  
INDIGO/RED



## PREMIER LIGHT FB

- Specially developed for young players to finely tune their football skills
- Official size - but lighter
- Shiny PU
- Air-Trap bladder which allows the ball to retain air for longer

- Specially developed lining which gives optimal appearance and bounce
- Hand-stitched
- Durable
- Suitable for grass, artificial and indoor pitches
- Warranty: 2 year stitch and shape guarantee

091828 : 4 5



9811  
WHITE/VINTAGE  
INDIGO/ORANGE





## PREMIER ULTRA LIGHT FB

- Specially developed for kids to finely tune their football skills
- Official size - but lighter
- Shiny PU
- Air-Trap bladder which allows the ball to retain air for longer
- Specially developed lining which gives optimal appearance and bounce
- Hand-stitched
- Durable
- Suitable for grass, artificial and indoor pitches
- Warranty: 2 year stitch and shape guarantee

091829 : 3 4 5

---



9814  
WHITE/VINTAGE  
INDIGO/TURQUOISE



## ENERGIZER FB

- Machine-stitched football for play and games
- Suitable for all conditions

091830 : 3 4 5

---



9813  
WHITE/VINTAGE  
INDIGO/GREEN



## FUTSAL

- PU
- Hand-stitched
- Durable
- Special Futsal Butyle bladder
- Moderate bounce for optimal Futsal playing properties
- Suitable for indoor and outdoor Futsal pitches
- Warranty: 2 year stitch and shape guarantee

091831 : 4

---



9814  
WHITE/VINTAGE  
INDIGO/TURQUOISE

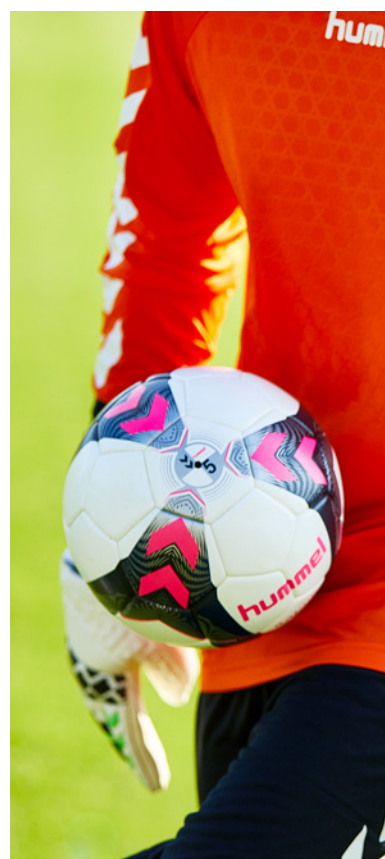






↑  
Concept+ Football **091825**

↓  
Elite Football **091826**



↑  
Blade Plus Football **091834**



# VOLLEYBALL

**hummel offers a range of volleyballs for elite players and amateurs – for both match and training.**

With a soft-to-the-hand touch and a streamlined flight capability, hummel indoor volleyballs are designed to meet every player's toughest requirements. hummel volleyballs boast a highly

engineered design that plays perfectly to the stability and control of the ball when in high intensity gameplay, as well as in low intensity practice.

Whether you are looking for a high performance match ball or a reliable training ball, hummel volleyballs solve the need.





### HMLCONCEPT VB

- Synthetic leather cover PU 1.5 mm
- 18 panel hand sewn construction
- Latex bladder for extra softness
- Soft play technology

205073 : 5

---



9045  
WHITE/  
ARGENTINA BLUE



### HMLENERGIZER VB

- Super soft TPU 3.0 mm
- 18 panel machine sewn construction
- Synthetic rubber bladder for better air retention
- Soft play technology

205072 : 5

---



9107  
WHITE/  
MARINE





AERO VOLLEY FLY 201095

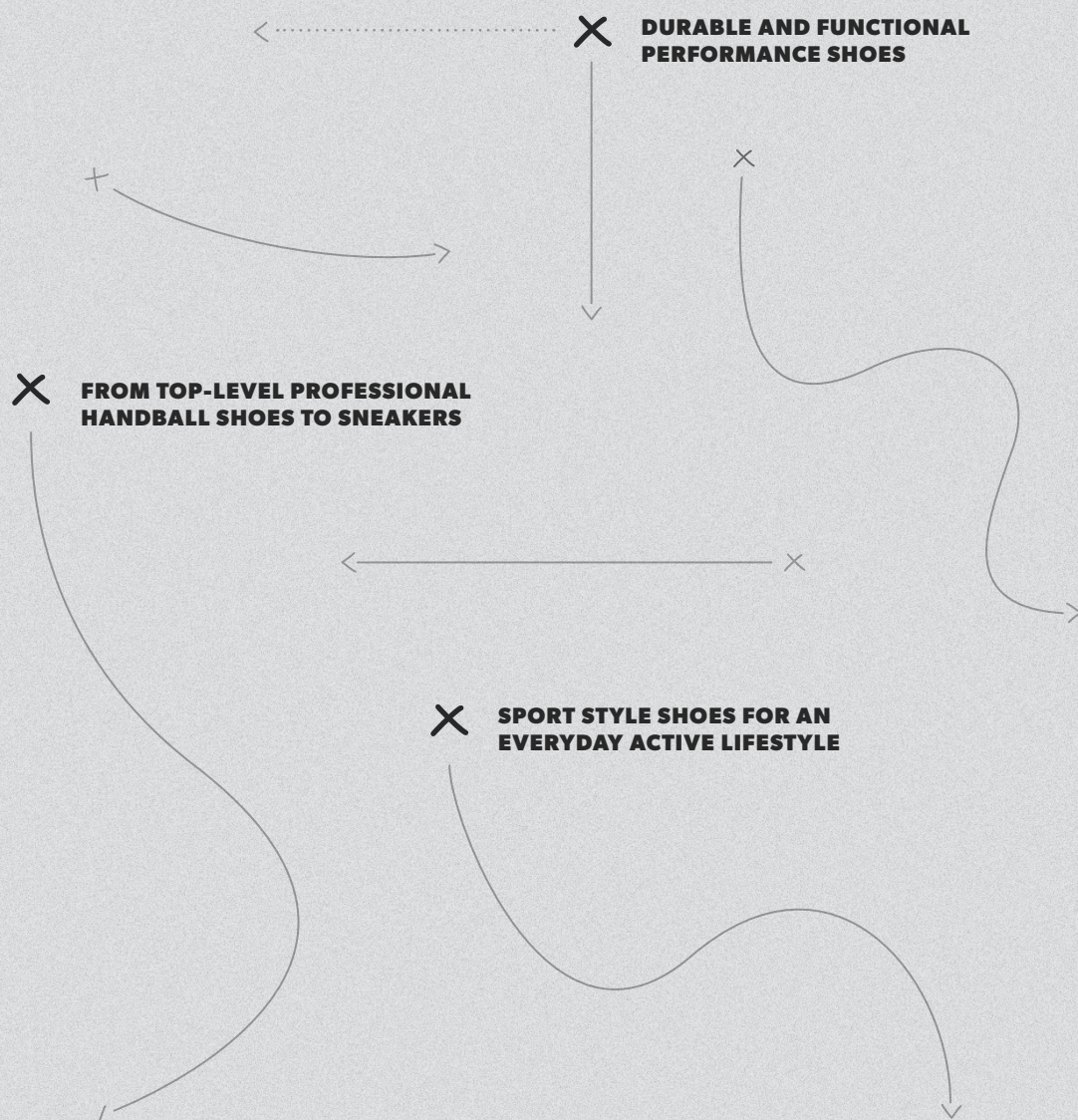


# FOOTWEAR

## **The diverse footwear range covers both indoor shoes, football boots and stylish sneakers**

From professional, top-level handball shoes to stylish sneakers, hummel shoes provide comfort and are designed to last. The Aerocharge series of indoor shoes are an elite range with styles for professionals and amateurs alike. With EVA cushioning, TPU coun-

ter, pivot zones and colourful design details, indoor shoes create stability, comfort, support, traction and durability in a game. The classic football boots carry a strong legacy, while the sport style collection is geared towards current lifestyle trends with Terraflly, Crosslite, Agilis and Liga sneaker designs being among the favourites.





## DUAL PLATE IMPACT

- PU/Mesh/TPU
- High performance handball shoe
- Dual Plate Outsole – high stability to ensure maximum support
- PIVOT, SPE Shock Point, Stabilizing S.T.Z. Zone
- Supportive upper - stable, breathable and with 360 support
- Comfortable Fit

202403 : 3,5 - 15

---



8616  
POSEIDON



## DUAL PLATE POWER

- PU/Mesh
- High performance handball shoe
- Dual Plate Outsole – high stability to ensure maximum support
- PIVOT, SPE Shock Point, Stabilizing S.T.Z. Zone
- Supportive upper - stable, breathable and with 360 support
- Comfortable Fit

202405 : 3,5 - 15

---



8616  
POSEIDON



## DUAL PLATE SKILL

- Mesh/PU
- Performance handball shoe
- Dual Plate Outsole – high stability to ensure maximum support
- PIVOT, SPE Shock Point, Stabilizing S.T.Z. Zone
- Breathable upper with 360 support
- Comfortable Fit

202406 : 3,5 - 15

---



8616  
POSEIDON





## AERO VOLLEY FLY

- Mesh/CPU/TPU
- High performance indoor shoe
- OmniCourt outsole – Lightweight and bounce cushioning for explosive takeoff
- Solid Stabilizer, Ultra Twirl Pivot, Shock Point EVO heel absorption
- Flex Shield upper – Stabilizing cage
- Mid Cut, Breathable Mesh

201095 : 3,5 - 15



7325  
ICED AQUA

9001  
WHITE



## DUAL PLATE POWER WS

- PU/Mesh
- High performance handball shoe
- Dual Plate Outsole – high stability to ensure maximum support
- PIVOT, SPE Shock Point, Stabilizing S.T.Z. Zone
- Supportive upper – stable, breathable and with 360 support
- Comfortable Fit
- Womens fit

202404 : 3,5 - 8



9001  
WHITE



## DUAL PLATE SKILL WS

- Mesh/PU
- Performance handball shoe
- Dual Plate Outsole – high stability to ensure maximum support
- PIVOT, SPE Shock Point, Stabilizing S.T.Z. Zone
- Breathable upper with 360 support
- Comfortable Fit

202407 : 3,5 - 8



9001  
WHITE





## AEROCHARGE HB 200 2.0

- Mesh/PU
- High performance handball shoe
- Aerocharge outsole – lightweight, ensuring explosive takeoff
- PIVOT PRO, Twin Heel Control, Stabilizer PRO
- Embedded heel counter – heel support and stability
- 360 GRIP
- Sock Fit
- Breathable Mesh

203723 : 3,5 - 15

---



8616  
POSEIDON



## AEROCHARGE HB 200 2.0 WS

- Mesh/PU
- High performance handball shoe
- Aerocharge outsole – lightweight, ensuring explosive takeoff
- PIVOT PRO, Twin Heel Control, Stabilizer PRO
- Embedded heel counter – heel support and stability
- 360 GRIP, Sock Fit, Breathable Mesh
- Womens fit

203724 : 3,5 - 8

---



9001  
WHITE



## AEROCHARGE HB 180 2.0

- Mesh/PU
- Performance all-around indoor shoe
- Aerocharge outsole – lightweight, ensuring explosive take off
- PIVOT PRO, Twin Heel Control, Stabilizer PRO
- 360 GRIP, Comfortable Fit, Breathable Mesh

203726 : 3,5 - 15

---



8616  
POSEIDON



## AEROCHARGE HB 180 2.0 WS

- Mesh/PU
- Performance all-around indoor shoe
- Aerocharge outsole – lightweight, ensuring explosive take off
- PIVOT PRO, Twin Heel Control, Stabilizer PRO
- 360 GRIP, Comfortable Fit, Breathable Mesh
- Womens fit

203727 : 3,5 - 8

---



9001  
WHITE





## HUMMEL CELESTIAL X5

- PU/Mesh
- Indoor sport shoe
- Shock proof sockliner to obtain inlay absorbtion
- Lightweight flexible outsole - 4D energy system
- Lightweight, flexible and breathable mesh and PU

060158 : 3,5 - 15

---



2001  
BLACK



## ROOT PLAY TROPHY

- PU/Textile
- All-round indoor shoe
- Root outsole – Comfortable fit
- PIVOT, non-marking
- Breathable upper

202409 : 3,5 - 15

---



8616  
POSEIDON



## ROOT PLAY ADULT

- PU/Textile
- All-round indoor shoe
- Root outsole – Comfortable fit
- PIVOT, Non-marking outsole
- Breathable upper

201531 : 3,5 - 15

---



8744  
SARGASSO SEA





## AEROCHARGE HB 200 2.0 JR

- Mesh/PU
- High performance kids handball shoe
- Aerocharge outsole – lightweight, ensuring explosive takeoff
- PIVOT PRO, Twin Heel Control, Stabilizer PRO
- 360 GRIP, Breathable Mesh

203725 : 28 - 38

---



8616  
POSEIDON



## ROOT JR LC TROPHY

- Mesh/PU
- All-round indoor kids shoe
- Root outsole – Comfortable fit
- PIVOT, non-marking
- Breathable upper

202410 : 26 - 40

---



8616  
POSEIDON



## ROOT JR VC 2.0 TROPHY

- Mesh/PU
- All-round indoor kids shoe
- Root outsole – Comfortable fit
- PIVOT, non-marking
- Breathable upper
- Velcro Straps – Easy access and optimize fit

202411 : 26 - 40

---



8616  
POSEIDON





## HUMMEL ROOT PLAY

- PU/Mesh
- All-round indoor shoe
- Root outsole - Comfortable fit
- PIVOT
- Non-marking outsole
- Breathable upper

060167 : 3,5 - 15



2001  
BLACK



## LIGA GK

- Suede/PU
- Full rubber outsole for ultimate grip and impact feel
- Enhanced comfort insole - Ergonomic insole by hummel
- Retro design
- Indoor
- Low

060089 : 36 - 48



2001  
BLACK

3425  
RIBBON RED

7666  
PEACOCK

8604  
HERITAGE BLUE



## OLD SCHOOL STAR FG

- Microfiber leather / PU
- Old school classic football boot
- Round studs for optimal stability and grip

201087 : 40 - 45



2001  
BLACK





## ACTUS BREATHER

- Breathable and lightweight upper
- Aerotech super cush EVA insole
- Aerotech EVA outsole

201108 : 36 - 48



1525  
ASPHALT

9001  
WHITE



## CROSSLITE DOT 4

- Aerotech EVA outsole
- Mono mesh with hexagons cut-out details
- Aerotech super cush EVA insole

201110 : 36 - 48



1525  
ASPHALT



## LEGEND NP

- Aerotech EVA midsole
- Rubber outsole with TGR grip technology
- Aerotech super cushioning EVA insole
- Lifestyle upper in neoprene and suede

203335 : 36 - 48



1525  
ASPHALT



## ACTUS TRAINER

- Knit and breathable upper
- Aerotech super-cushioning EVA insole
- Aerotech EVA outsole

203661 : 36 - 48



2001  
BLACK

7666  
PEACOCK

8382  
GRAPE SHAKE

9001  
WHITE





## JENSEN SANDAL

- Injection EVA
- Lightweight full blown EVA slipper
- Soft injected rubber for comfortable fit and feel
- Easy "slip on"
- Perfect for allround use
- Should not be kept in sun or +50 degrees Celsius

060451 : 30 - 48



2001  
BLACK

3233  
BRIGHT ROSE

7364  
TOTAL ECLIPSE



## LARSEN SLIPPER VC

- Injection EVA
- One piece lightweight EVA foam midsole/outsole
- Water resistant
- Classic old schoold design
- Synthetic upper with soft touch lining for extra comfort
- Should not be kept in sun or +50 degrees Celsius

060406 : 36 - 48



2001  
BLACK

7648  
DRESS BLUE/  
WHITE



## LARSEN SLIPPER

- Injection EVA
- One piece lightweight EVA foam midsole/outsole
- Water resistant
- Classic old school design
- Synthetic upper with soft touch lining for extra comfort
- Should not be kept in sun or +50 degrees Celsius

060405 : 36 - 48



2001  
BLACK

7648  
DRESS BLUE/  
WHITE



## LARSEN SLIPPER SMU

- Injection EVA
- One piece lightweight EVA foam midsole/outsole
- Water resistant
- Classic old school design
- Synthetic upper with soft touch lining for extra comfort
- Should not be kept in sun or +50 degrees Celsius

060437 : 36 - 48



3062  
TRUE RED

6140  
EVERGREEN

7045  
TRUE BLUE

8540  
OMBRE BLUE








HUMMEL KARMA FIGURINE **099566**





# POS

**hummel offers a wide range of unique POS-materials that helps you to “hummel up” your store.**

At hummel we know how much the right Point of Sale (POS) materials mean to the sales buying experience. Over the years we have developed

a strong visual identity and today we offer a wide range of stylish and unique POS-materials. Besides creating knowledge and a will to buy the products, our POS-materials are made to make your store look Scandi-cool and tell the story of hummel.



**INCREASED SALES  
THROUGH MERCHANDISING**

**HUMMEL BRANDED  
GIVE-AWAYS**

**OPTIMIZED CONSUMER  
EXPERIENCE**



---

## HUMMEL TATTOOS

- Black, non-permanent tattoos
- The tattoos easily transfers to the skin by using only water and a cloth or sponge
- Removes with cream or baby oil
- 50 pcs. per package
- Price listed is per piece
- Size: 3,5 x 18,5 CM

**099931 : ONE SIZE**

---



9001  
WHITE



---

## HUMMEL GENERIC PEN

- Click-action ballpoint pen
- Blue ink
- 25 pcs. per package
- Price listed is per piece

**097027 : ONE SIZE**

---



2001  
BLACK



---

## GENERIC LANYARD

- 100% polyester
- Safety clip, release buckle and carabiner hook
- 50 pcs. per package
- Price listed is per piece

**099079 : ONE SIZE**

---



2001  
BLACK



---

## HUMMEL NOTEBOOK

- Small notebook with cardboard bound cover with rounded corners and debossed logo on front
- 120 lined pages with faded black/white heritage images on left
- Elastic closure
- Size: W10,5 x H7 CM

**099454 : ONE SIZE**

---



2001  
BLACK





## BLADE PLUS MINI FOOTBALL

- Mini ball for skill development & fun
- Circumference: 45 - 50 CM

091853 : ONE SIZE



9808  
WHITE/VINTAGE  
INDIGO/PNK



## CONCEPT PRO MINI HANDBALL

- Mini ball for skill development and fun
- Circumference: 45 - 50 cm

205628 : ONE SIZE



9272  
WHITE/  
TURQUOISE



## SPORT WINDOW STICKER

- Vinyl window sticker for inside mounting
- Size: Ø10 CM

097045 : ONE SIZE



2001  
BLACK



## STYLE WINDOW STICKER

- Vinyl window sticker for inside mounting
- Size: Ø10 CM

097046 : ONE SIZE



2001  
BLACK

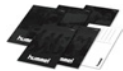




## GENERIC A6 POSTCARD

- 355 g/m<sup>2</sup> postcard
- 50 pcs. per assortment
- Price listed is per piece

097042 : ONE SIZE



9001  
WHITE



## GENERIC A4 TABLE DISPLAY

- Cardboard A-sign
- Tonal heritage image

097043 : ONE SIZE



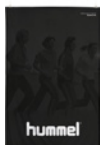
2114  
BLACK/  
WHITE



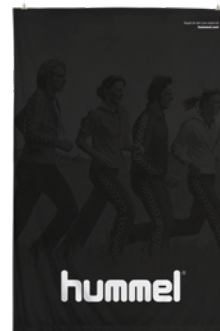
## GENERIC BANNER

- 100% knitted polyester, 210 g/m<sup>2</sup>
- Iron bar at top and bottom
- Comes with two clips and fishing wire for hanging
- Size: W100 x H160 CM

097044 : ONE SIZE



2114  
BLACK/  
WHITE



## GENERIC PVC BANNER SPORT

- Banners are fitted with holes for suspension
- Size: W300 x H100 CM

201652 : ONE SIZE



2001  
BLACK





ASH TREE HANGER KIDS TOP

- Ash tree shirt hanger for kids shirts
- With metal hook and anti-slip tape
- 50 pcs. per package
- Price listed is per piece

099777 : ONE SIZE



9001  
WHITE



ASH TREE HANGER KIDS PANTS

- Ash tree pants hanger for kids pants
- With metal hook and two adjustable clips
- 50 pcs. per package
- Price listed is per piece

099778 : ONE SIZE



9001  
WHITE



ASH TREE HANGER ADULT TOP

- Ash tree shirt hanger for adult shirts
- With metal hook and anti-slip tape
- 50 pcs. per package
- Price listed is per piece
- Size: W43 CM

099775 : ONE SIZE



9001  
WHITE



ASH TREE HANGER ADULT PANTS

- Ash tree pants hanger for adult pants
- With metal hook and two adjustable clips
- 50 pcs. per package
- Price listed is per piece
- Size: W35 CM

099776 : ONE SIZE



9001  
WHITE





## PLASTIC BAG SMALL

- 90g plastic bag
- Mat white outside and shiny black inside
- Round handle
- 250 pcs. per package
- Price listed is per piece
- Size: W25 x H38 CM, handle Ø8,5 CM



097037 : ONE SIZE



9124  
WHITE/  
BLACK

## PLASTIC BAG MEDIUM

- 90g plastic bag
- Mat white outside and shiny black inside
- Round handle
- 250 pcs. per package
- Price listed is per piece
- Size: W45 x H50 CM, handle Ø8,5 CM



097038 : ONE SIZE



9124  
WHITE/  
BLACK

## PLASTIC BAG LARGE

- 90g plastic bag
- Mat white outside and shiny black inside
- Round handle
- 100 pcs. per package
- Price listed is per piece
- Size: W60 x H50 x D5 CM, handle Ø8,5 CM



097039 : ONE SIZE



9124  
WHITE/  
BLACK



## SHOPPING BAG

- 120 g/m<sup>2</sup> non-woven shopping bag
- Printed hummel logo
- Round zipper puller
- 50 pcs. per assortment
- Price listed is per piece
- Size: L34 x H30 x D25 CM

097041 : ONE SIZE



2001  
BLACK



## HUMMEL UMBRELLA

- 100% polyester with black metal shaft
- Velcro closure
- Windproof
- Auto-open function
- Size: 23"



2001  
BLACK



203158 : ONE SIZE

## HUMMEL KARMA FIGURINE

- Karma figurine made from polyresin with a sand-like surface
- Size: H35 x L35 x W20 CM



9001  
WHITE



099556 : ONE SIZE



# INDEX

Style No.	Style name	Page	Style No.	Style name	Page
002435	AUTHENTIC CHARGE FUNCTIONAL POLO	42	060451	JENSEN SANDAL	147
003636 103636	CORE SS POLY JERSEY	56	080822 180822	CORE SPRAY JACKET	64
003649	CORE WOMENS SS JERSEY	57	083036 183036	AUTHENTIC CHARGE WINDBREAKER	44
003651 103651	CORE BASKET JERSEY	58	083048 183048	AUTHENTIC CHARGE LIGHT WEIGHT WINDBREAKER	45
003677 103677	AUTHENTIC CHARGE SS POLY JERSEY	38	083049 183049	AUTHENTIC CHARGE ALL-WEATHER JACKET	45
003678	AUTHENTIC CHARGE SS POLY JERSEY WOMAN	39	083050 183050	AUTHENTIC CHARGE STADION JACKET	45
003679 103679	AUTHENTIC CHARGE SS TRAINING JERSEY	42	083051 183051	AUTHENTIC CHARGE FUNCTIONAL JACKET	45
003709 103709	AUTHENTIC CHARGE COTTON SWEATSHIRT	42	089061	TRAINING HAT	109
003746	HUMMEL FIRST COMPRESSION SS	79	089066	BASIC CAP	110
003755 103755	CORE STRIPED SS JERSEY	57	089441	TRAINING BEANIE	109
003756 103756	CORE POLYESTER TEE	58	091825	CONCEPT PLUS FB	133
004087 104087	ESSENTIAL GK JERSEY	74	091826	ELITE FB	133
004329	HUMMEL FIRST COMPRESSION LS	79	091827	PREMIER FB	133
004615 104615	CORE LS POLY JERSEY	56	091828	PREMIER LIGHT FB	133
004616 104616	AUTHENTIC CHARGE LS POLY JERSEY	38	091829	PREMIER ULTRA LIGHT FB	134
005002 105002	FUNDAMENTAL TRAINING BIB	110	091830	ENERGIZER FB	134
008467 108467	CLASSIC BEE COTTON TEE	92	091831	FUTSAL	134
010760	CLASSIC BEE WOMENS TECH SHORTS	98	091833	STORM FB	132
010810	CLASSIC BEE AAGE SHORTS	93	091834	BLADE PLUS FB	132
010815 110815	ESSENTIAL GK SHORTS	74	091835	STORM LIGHT FB	132
010816 110816	ESSENTIAL GK SHORTS W PADDING	74	091836	STORM ULTRA LIGHT FB	132
011083 111083	CORE POLY SHORTS	59	091853	BLADE PLUS MINI FOOTBALL	151
011086	CORE WOMENS SHORTS	59	097027	HUMMEL GENERIC PEN	150
011087 111087	CORE BASKET SHORTS	59	097037	PLASTIC BAG SMALL	154
011334 111334	AUTHENTIC CHARGE POLY SHORTS	38	097038	PLASTIC BAG MEDIUM	154
011335	AUTHENTIC CHARGE POLY SHORTS WOMAN	39	097039	PLASTIC BAG LARGE	154
011336	CLASSIC BEE CI SEAMLESS TIGHTS	98	097041	SHOPPING BAG	155
011361	HUMMEL FIRST COMPRESSION SHORT TIGHTS	79	097042	GENERIC A6 POSTCARD	152
011362	HUMMEL FIRST COMPRESSION LONG TIGHTS	79	097043	GENERIC A4 TABLE DISPLAY	152
011503 111503	AUTHENTIC CHARGE TRAINING SHORTS	43	097044	GENERIC BANNER	152
019146	CLASSIC BEE NOAH POLO	92	097045	SPORT WINDOW STICKER	151
019207	RUNNER SS TEE	46	097046	STYLE WINDOW STICKER	151
019208	RUNNER WOMEN SS TEE	46	098153	3-PACK HEADBAND	110
019238	CLASSIC BEE CI SEAMLESS TOP	98	099000	HUMMEL BALL PUMP	111
022030	3-PACK BASIC SOCK	107	099014	OLD SCHOOL BIG WRISTBAND	111
022129	ANKLE SOCK SMU	107	099015	OLD SCHOOL SMALL WRISTBAND	111
022140	FUNDAMENTAL 3-PACK SOCK	107	099079	GENERIC LANYARD	150
025064	OLD SCHOOL SMALL TOWEL	111	099164	OLD SCHOOL CAPTAINS BAND	110
025065	OLD SCHOOL BIG TOWEL	111	099296	HUMMEL RESIN NATURAL SMALL	113
031198 131198	CLASSIC GK PANTS	75	099297	HUMMEL RESIN GEL SMALL	113
032165 132165	CORE FOOTBALL PANTS	63	099298	HUMMEL RESIN REMOVER	112
032173 132173	CORE POLY PANTS	63	099299	HUMMEL VALVE OIL	112
032181	CORE ALL-WEATHER PANTS	64	099302	HUMMEL RESIN NATURAL BIG	113
032182	CORE BENCH PANTS	64	099303	HUMMEL RESIN GEL BIG	113
033390	CLASSIC BEE AAGE ZIP JACKET	93	099454	HUMMEL NOTEBOOK	150
033401 133401	AUTHENTIC CHARGE POLY ZIP JACKET	40	099556	HUMMEL KARMA FIGURINE	155
033402	AUTHENTIC CHARGE POLY ZIP JACKET WOMAN	40	099775	ASH TREE HANGER ADULT TOP	153
033403 133403	AUTHENTIC CHARGE POLY HOODIE	44	099776	ASH TREE HANGER ADULT PANTS	153
033406 133406	AUTHENTIC CHARGE TRAINING SWEAT	42	099777	ASH TREE HANGER KIDS TOP	153
033415	AUTHENTIC CHARGE WOMAN POLY HOODIE	44	099778	ASH TREE HANGER KIDS PANTS	153
033416 133416	AUTHENTIC CHARGE ZIP HOODIE	44	099931	HUMMEL TATTOOS	150
033551 133551	AUTHENTIC CHARGE MICRO ZIP JACKET	40	200004 200005	TECH MOVE JERSEY S/S	24
033552	AUTHENTIC CHARGE MICRO ZIP JACKET WOMAN	40	200006	TECH MOVE JERSEY WOMAN S/S	25
036893 136893	CORE POLY JACKET	62	200007 200048	TECH MOVE JERSEY L/S	24
036895 136895	CORE 1/2 ZIP SWEAT	62	200008 200009	TECH MOVE POLY SHORTS	24
037110	CLASSIC BEE AAGE PANTS	93	200010	TECH MOVE POLY SHORTS WOMAN	25
037127 137127	AUTHENTIC CHARGE SWEAT PANTS	43	200011 200012	TECH MOVE HALF ZIP SWEATSHIRT	26
037227 137227	AUTHENTIC CHARGE MICRO PANTS	41	200013 200014	TECH MOVE POLY ZIP JACKET	26
037228 137228	AUTHENTIC CHARGE POLY PANTS	41	200015 200016	TECH MOVE POLY PANTS	27
037229 137229	AUTHENTIC CHARGE FOOTBALL PANTS	43	200017 200018	TECH MOVE POLY HOODIE	26
037231	AUTHENTIC CHARGE MICRO PANTS WOMAN	41	200019 200020	TECH MOVE ZIP HOOD	26
037614 137614	AUTHENTIC CHARGE 3/4 PANTS	43	200021 200022	TECH MOVE FOOTBALL PANTS	27
039720	CLASSIC BEE WOMENS TECH PANTS	98	200025 200026	TECH MOVE TRAINING SHORTS	27
040918	HUMMEL BALL NET	119	200027 200028	TECH MOVE ALL WEATHER JACKET	28
040965	AUTHENTIC TOILETRY BAG	119	200029	TECH MOVE BENCH JACKET	28
041441	LIGHT WEIGHT PLAYER GLOVES	109	200170	HMLCLIO ZIP JACKET	95
041442	COLD WINTER PLAYER GLOVES	109	200171	HMLCLIO ZIP HOOD	95
060089	LIGA GK	145	200173	HMLCLIO PANTS	95
060158	HUMMEL CELESTIAL X5	143	200174	HMLGUY ZIP JACKET	94
060167	HUMMEL ROOT PLAY	145	200175 200756	HMLGUY ZIP HOOD	94
060405	LARSEN SLIPPER	147	200176	HMLGUY SWEATSHIRT	93
060406	LARSEN SLIPPER VC	147	200177 200757	HMLGUY PANTS	94
060437	LARSEN SLIPPER SMU	147	200178	HMLGUY SHORTS	94



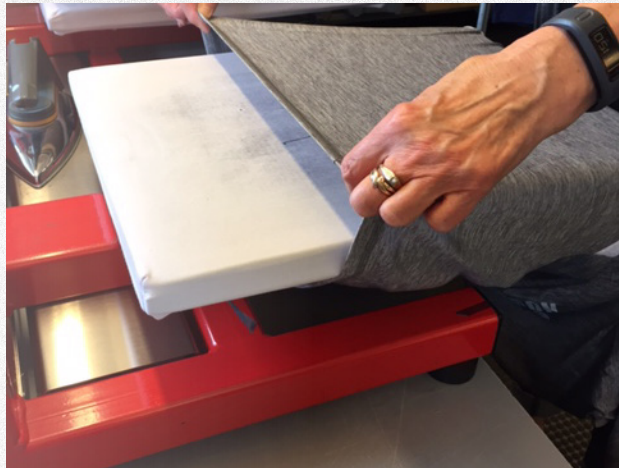
Style No.	Style name	Page	Style No.	Style name	Page
200492	HMLBABETTE JACKET	100	203515 203516	HUMMEL GO COTTON LOGO SWEATSHIRT	89
200493	HMLESKE JACKET	99	203517	HUMMEL GO COTTON LOGO HOODIE WOMAN	89
200494	HMLDALIA JACKET	100	203518	HUMMEL GO COTTON LOGO T-SHIRT WOMAN S/S	86
200495	HMLASSER JACKET	99	203519	HUMMEL GO COTTON LOGO SWEATSHIRT WOMAN	89
200626 200765	HMLNELLY ZIP JACKET	97	203520 203521	HUMMEL GO COTTON POLO	91
200627 200769	HMLNATHAN ZIP JACKET	96	203522	HUMMEL GO COTTON POLO WOMAN	91
200628 200768	HMLNELLY PANTS	97	203525 204051	CORE HIPSTER WOMAN	61
200629 200770	HMLNATHAN PANTS	96	203526 203527	CORE POLY COACH SHORTS	60
200646 201000	TECH MOVE FUNCTIONAL LIGHT WEIGHT JACKET	28	203528 204052	HUMMEL GO POLY BERMUDA SHORTS	87
200915	AUTHENTIC CHARGE BALL BAG	119	203529	HUMMEL GO POLY BERMUDA SHORTS WOMAN	87
200918	AUTHENTIC CHARGE GYM BAG	118	203530 203531	HUMMEL GO COTTON PANTS	90
200919	TECH MOVE SPORTS BAG	116	203532	HUMMEL GO COTTON BERMUDA SHORTS WOMAN	87
200920	TECH MOVE BACK PACK	117	203533 204053	HUMMEL GO COTTON BERMUDA SHORTS	87
201087	OLD SCHOOL STAR FG	145	203566 203567	HUMMEL GO COTTON T-SHIRT S/S	86
201095	AERO VOLLEY FLY	141	203596	HMLSTORM PRO 2.0	124
201108	ACTUS BREATHER	146	203597	HMLSTORM PRO	124
201110	CROSSLITE DOT 4	146	203598	HMLARENA	126
201160	PRO FOOTBALL SOCK	106	203599	HMLELITE GRIP	125
201531	ROOT PLAY ADULT	143	203600	HMLELITE	125
201626	PRECISION PRO JERSEY S/S	14	203601	HMLCONCEPT	124
201627	PRECISION PRO HALF ZIP SWEATSHIRT	14	203602	HMLPREMIER	125
201628	PRECISION PRO TRAINING ZIP JACKET	15	203603	HMLKIDS	127
201629	PRECISION PRO ZIP HOODIE	15	203604	HMLBEACH	126
201631	PRECISION PRO FOOTBALL PANTS	14	203605	HMLSPUME KIDS	127
201632	PRECISION PRO SHORTS	14	203606	HMLEASY KIDS	127
201652	GENERIC PVC BANNER SPORT	152	203607	HMLSTREET PLAY	126
201699	PRECISION PRO POLY PANTS	15	203661	ACTUS TRAINER	146
202403	DUAL PLATE IMPACT	140	203723	AEROCHARGE HB 200 2.0	142
202404	DUAL PLATE POWER WS	141	203724	AEROCHARGE HB 200 2.0 WS	142
202405	DUAL PLATE POWER	140	203725	AEROCHARGE HB 200 2.0 JR	144
202406	DUAL PLATE SKILL	140	203726	AEROCHARGE HB 180 2.0	142
202407	DUAL PLATE SKILL WS	141	203727	AEROCHARGE HB 180 2.0 WS	142
202409	ROOT PLAY TROPHY	143	203785	HMLCONCEPT PRO	124
202410	ROOT JR LC TROPHY	144	204012	CORE SPORTS BAG	116
202411	ROOT JR VC 2.0 TROPHY	144	204043	ELITE INDOOR SOCK LOW	108
202636 202637	HUMMEL FIRST SEAMLESS JERSEY S/S	80	204044	ELITE INDOOR SOCK HIGH	108
202638 202639	HUMMEL FIRST SEAMLESS JERSEY L/S	80	204045	ELEMENT PERFORMANCE SOCK 2-PACK	108
202640 202641	HUMMEL FIRST SEAMLESS TIGHTS	80	204046	ELEMENT FOOTBALL SOCK	106
202642 202643	HUMMEL FIRST SEAMLESS SHORT TIGHTS	80	204156	HMLENERGIZER HB	126
202644	HUMMEL FIRST SEAMLESS JERSEY S/S WOMEN	81	204157	HMLPREMIER GRIB	125
202645	HUMMEL FIRST SEAMLESS JERSEY L/S WOMEN	81	204170 204171	CORE BENCH JACKET	64
202647	HUMMEL FIRST SEAMLESS BRA WOMEN	81	204173	HUMMEL GO COTTON PANTS WOMAN	90
202648	HUMMEL FIRST SEAMLESS TIGHTS WOMEN	81	204230 204231	HUMMEL GO COTTON ZIP HOODIE	90
202649	HUMMEL FIRST SEAMLESS SHORT TIGHTS WOMEN	81	204232	HUMMEL GO COTTON ZIP HOODIE WOMAN	90
202650	HUMMEL FIRST SEAMLESS TANK TOP WOMEN	81	204300 204301	CORE TIGHTS WOMAN	61
202951 203940	HMLJAMES ZIP JACKET	96	204500 204501	HUMMEL FIRST PERFORMANCE JERSEY S/S	82
202952 203941	HMLJAMES PANTS	96	204502 204503	HUMMEL FIRST PERFORMANCE JERSEY L/S	82
203025	HMLJASMINE ZIP JACKET	97	204504 204505	HUMMEL FIRST PERFORMANCE TIGHT SHORTS	82
203026	HMLJASMINE PANTS	97	204513 204547	HUMMEL FIRST PERFORMANCE TIGHTS	82
203027	HMLTAYLOR TIGHTS	95	204514	HUMMEL FIRST PERFORMANCE WOMEN JERSEY S/S	83
203158	HUMMEL UMBRELLA	155	204515	HUMMEL FIRST PERFORMANCE WOMEN JERSEY L/S	83
203335	LEGEND NP	146	204516	HUMMEL FIRST PERFORMANCE WOMEN HIPSTER	83
203404	ELEMENT FOOTBALL SOCK FOOTLESS	106	204517	HUMMEL FIRST PERFORMANCE WOMEN TIGHTS	83
203405	ELITE COMPRESSION SOCK	108	204544	AUTHENTIC CHARGE HANDBALL BAG	119
203435	CORE POLY TEE WOMAN S/S	58	204569	HMLJANE T-SHIRT S/S	92
203436 203437	CORE TEAM JERSEY S/S	56	204959	CORE GYM BAG	118
203438	CORE TEAM JERSEY WOMAN S/S	57	204960	HMLREFEREE JERSEY S/S	75
203439	CORE HALF ZIP SWEAT WOMAN	62	204961	HMLREFEREE POLY SHORTS	75
203440	HUMMEL GO COTTON T-SHIRT WOMAN S/S	86	205072	HMLENERGIZER VB	137
203441 203442	CORE MICRO ZIP JACKET	62	205073	HMLCONCEPT VB	137
203443 203444	CORE MICRO PANTS	63	205122	AUTHENTIC CHARGE SPORTS BAG	116
203445	CORE TRAINING POLY PANTS	63	205123	AUTHENTIC CHARGE SOCCER BAG	116
203446 204172	CORE INDOOR GK COTTON PANTS	61	205124	AUTHENTIC CHARGE BACK PACK	117
203447	CORE FUNCTIONAL POLO	60	205125	AUTHENTIC CHARGE BALL BACK PACK	117
203448	CORE FUNCTIONAL POLO WOMAN	60	205126	AUTHENTIC CHARGE TEAM SPORTS BAG	118
203470	HMLSANDER JACKET	99	205127	AUTHENTIC CHARGE TROLLEY	118
203472	HMLSTELLA JACKET	100	205345	HUMMEL WATERBOTTLE	112
203505 203506	HUMMEL GO COTTON SWEATSHIRT	88	205346	HUMMEL WATERBOTTLE CARRIER	112
203507	HUMMEL GO COTTON SWEATSHIRT WOMAN	88	205347	HUMMEL RE-GRIP	112
203508 203509	HUMMEL GO COTTON HOODIE	88	205628	CONCEPT PRO MINI HANDBALL	151
203510	HUMMEL GO COTTON HOODIE WOMAN	88			
203511 203512	HUMMEL GO COTTON LOGO HOODIE	89			
203513 203514	HUMMEL GO COTTON LOGO T-SHIRT S/S	86			



# PRINT GUIDE



- DO** take extra care with the print press
- DO** adjust the machine settings to the correct pressure per cm<sup>2</sup> and printing time
- DO** have the correct temperature settings as supplied in manual [max temperature 140°C]
- DO** use rubber pad for the garment's print area to lay on



- DO NOT** heat directly onto any existing print on the garment
- DO NOT** use either paper or Teflon sheet to protect existing print from the heat plate
- DO NOT** heat garment for any longer than 15 seconds



**IMPORTANT!** Providing that these guidelines are followed correctly, you should have a perfectly printed garment with no damage done to the existing print.

hummel is not liable for any damage made to the existing print/logo, should it be reheated and/or if the instructions are not followed correctly. This can damage existing print or logo leading to peeling-off or cracking.





# SIZE CHART

## Textile Children

EU year/cm	4/104	5/110	6/116	7/122	8/128	9/134	10/140	11/146	12/152	13/158	14/164	15/170	16/176
US year	4 Y		6 Y		YS/ 8 Y		10 Y		YM/12 Y		14 Y		YL/16 Y
ASIA cm	104	110	116	122	128	134	140	146	152	158	164	170	176

## Textile Adults

EU	XS	S	M	L	XL	XXL	XXXL	XXXXL
US	XXS	XS	S	M	L	XL	XXL	XXXL
ASIA	S	M	L	XO	XXO	XXXO	XXXXO	XXXXXO

## Footwear Children

UK	4	5	6	7	8	9	10	11	11 ½	12	13	1	2	2 ½	3 ½	4	5	
US	6	7	8	9	9 ½	10	11	12	12 ½	13	1	2	2 ½	3 ½	4	5	6	
EU	22	23	24	25	26	27	28	29	30	31	32	33	34	35	36	37	38	
JAPAN	12	13	14	15	16	16 ½	17	17 ½	18	19	20	21	21 ½	22	22 ½	23	24	
KOREA														215	220	225	230	240

## Footwear Adult

UK	3 ½	4	4 ½	5	5 ½	6	6 ½	7	7 ½	8	8 ½	9	9 ½	10	10 ½	11	11 ½	12	12 ½	13	14	15
USM	4 ½	5	5 ½	6	6 ½	7	7 ½	8	8 ½	9	9 ½	10	10 ½	11	11 ½	12	12 ½	13	13 ½	14	15	16
USL	5	5 ½	6	6 ½	7	7 ½	8	8 ½	9	9 ½												
EU	36	37	37 ½	38	38 ½	39	40	40 ½	41	42	42 ½	43	44	44 ½	45	46	46 ½	47	48	48 ½	49 ½	51
JAPAN	22 ½	23	23 ½	24	24 ½	25	25 ½	26	26 ½	27	27 ½	28	28 ½	29	29 ½	30	30 ½	31	31 ½	32	32 ½	33
KOREA	225	230	235	240	245	250	255	260	265	270	275	280	285	290	295	300	305	310	315			





# SHARE THE GAME

# H U M M E L S P O R T

x —————>