


26
27

ROTREFELLA



Moveable bindings since 2004





Vision: Inspire to an active lifestyle outdoors for the many.
Secure top performances for the best.

Creating winter wonders since 1927

We want to let everyone join in the endless joys of skiing. The very young, the almost ancient and everyone in between — from world class athletes to people coming straight from a comfy sofa. There are literally limitless ways you can enjoy yourself in the snow, and it doesn't matter if your blood is pumping through your veins when you're running up a hill, if

your adrenaline is rushing through your body speeding down a mountain, or if you're simply moving through the forest at your own pace, or perhaps even just enjoying a hot cup of cocoa. No matter if you're experiencing high speeds or calm tranquillity, the connection between you and the frozen element beneath your feet is so fluid and

natural that you don't even think about it. It's just there. It simply works.

We are Rottefella. Through our bindings, we have made winter accessible for everyone for nearly 100 years. And we will keep innovating for the next 100 years as well.



1927

Bror With
invents the first
split-toe binding

1971

NN, Nordic Norm,
75 mm toe piece
is introduced

1981

The first telemark
binding,
Super Telemark, is
introduced

1985

NNN, New Nordic
Norm system is
launched

1989

NNN BC (Back
Country) system is
launched

2004

NIS system with the
unique move-your-
binding functionality
is introduced

2006

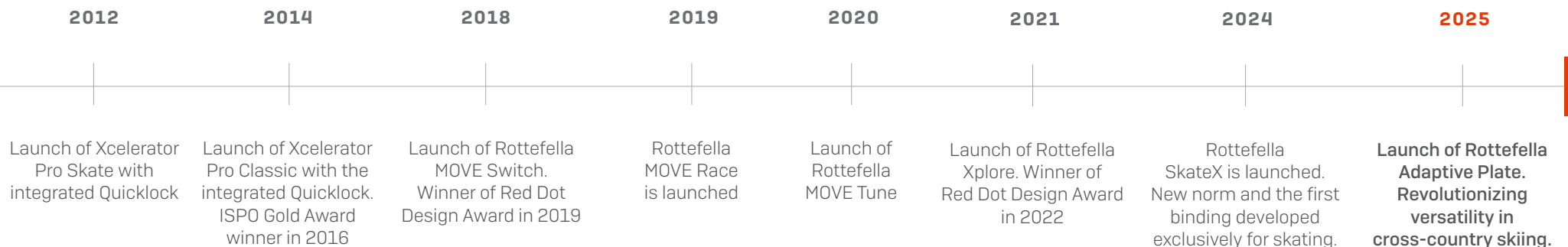
NTN, New Telemark
Norm, is launched

2011

Xcelerator System,
based on biodynamics,
sees the light of day

2011

Xcelerator System,
based on biodynamics,
sees the light of day



The pure joy of connection

The first Rottefella bindings were a spur-of-the-moment invention. Bror With, a Norwegian mechanical engineer and inventor, came across a couple of rat-traps at a local hardware store. He immediately saw an alternative use for them; with some clever alterations they could become first-class bindings.

They were an instant success, and also became the birth of Rottefella as a company, setting the foundation of the philosophy that became our DNA: a never-ending quest for new ways, ideas and solutions. Looking back, this has set its mark on history; not only ours but that of skiing in general: the Nordic Norm in 1971, the New Nordic Norm in 1985, the New Telemark Norm in 2006, and the Xcelerator System with integrated Quicklock in 2014. Over the years we have garnered other medals as well — in 2016, 89% of the winners in the World Cup used our bindings.

Today the MOVE System, launched as late as 2018, has been welcomed with open arms, being the first binding that can be moved without stepping out of the binding. Rottefella Xplore is our latest innovation within backcountry skiing. It is a new backcountry binding system designed to enhance stability, provide better comfort and increased mobility.

In the winter of 2024 Rottefella SkateX was launched: a new norm optimized for skate skiing. A groundbreaking innovation and the first system developed exclusively for skating SkateX is designed for better lateral stability, higher speeds, and improved balance compared to the current NNN binding system. SkateX was first used on a professional level in the World Championship in Biathlon in Nove Mesto in 2024. The athlete on the system finished first and second in the two first races of the championship.

It might seem like an enigma how such a tiny company from a small country on the outskirts of Europe could make such a huge impression on a global sport. The answer, of course, is because we are just that: A tiny company from a small country.

The distance from drawing-board to production of a prototype is measured in meters — the distance from prototype to trails is measured by stepping through the doors and into the woods outside. Our turn-around is really fast, just like our customers.

ROTTEFELLA
SKATEX





ROTTEFELLA SKATEX NIS

Version: Skate

Moveable: MOVE

Mounting system: NIS

Shoe norm: SkateX

Art. no: 10200430

N1



ROTTEFELLA SKATEX RAP & IFP

Version: Skate

Moveable: MOVE

Mounting system: RAP & IFP

Shoe norm: SkateX

Art. no: 10200439

RAP

IFP*

Rottefella SkateX
is a new norm that is
optimized for skating.



Rottefella SkateX - developed exclusively for the skate skiing style.

Rottefella SkateX is a groundbreaking innovation and the first system developed solely and exclusively for the skate skiing style. Discover a completely new power in every move. SkateX will

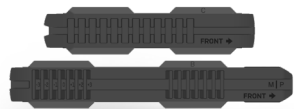
give you better lateral stability, higher speeds, and improved balance compared to the current NNN binding system.



Unlock endless possibilities with the new Rottefella Adaptive Plate

The Rottefella Adaptive Plate revolutionizes versatility in cross country skiing. Building on the proven bonding technology of the NIS plate, this innovative system works with a wide range of bindings and opens up endless possibilities for future innovations. Now, you can effortlessly switch between various locking and moving mechanisms by simply changing the inserts in the plate.

Protected by patents, this system is designed to work seamlessly with our entire new binding portfolio and remains fully compatible with any older NIS bindings. Experience the future of skiing with the Rottefella Adaptive Plate – where adaptability meets performance.



ROTTEFELLA NIS LOCK ADAPTIVE INSERT

Art. no: 20800194



ROTTEFELLA MOVE GENERATION 1 ADAPTIVE INSERT

Art. no: 20800189

Inserts making the new Rottefella Adaptive Plate backward-compatible. This means that all bindings based on the NIS system will be possible to mount to the new RAP plate.



NEW!

ROTTEFELLA QUICKLOCK PRO

Changeable flex: Yes

Version: Classic / Skate

Moveable: Quicklock

Mounting system: RAP / IFP

Shoe norm: NNN

Art. no: 10200461/ 10200459

RAP

IFP*



NEW!

ROTTEFELLA PERFORMANCE JUNIOR

Changeable flex: Yes

Version: Skate / Classic / Step-in

Moveable: Quicklock

Mounting system: RAP / IFP

Shoe norm: NNN Shoe size: 32-42

Art. no: 10200466 / 10200465

RAP

IFP*



ROTTEFELLA MOVE SWITCH PERFORMANCE

Changeable flex: Yes

Version: Classic / Step-in

Moveable: MOVE

Mounting system: RAP / IFP

Shoe norm: NNN

Art. no: 10200440

RAP

IFP*



ROTTEFELLA PERFORMANCE

Changeable flex: Yes

Version: Skate / Classic / Step-in

Moveable: Quicklock

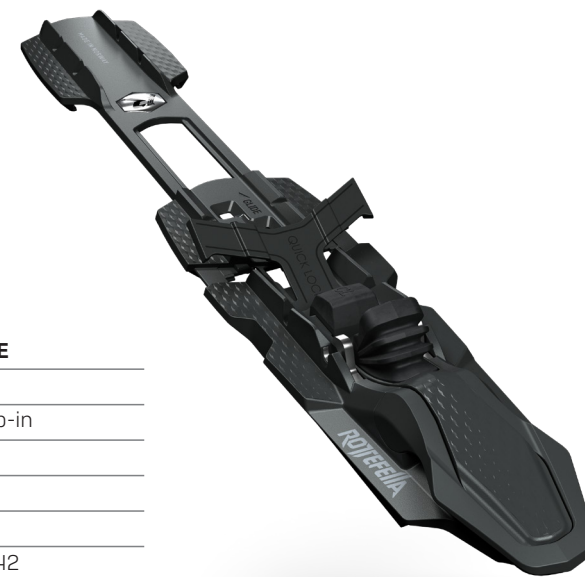
Mounting system: RAP / IFP

Shoe norm: NNN

Art. no: 10200441 / 10200442

RAP

IFP*







"The combination, wax skis and
MOVE is brilliant. I adjust
the binding and prolong the wax"

- Øystein Pettersen, Olympic medalist.



WAX SKIS / MOVE – THE BEST WAY TO ADJUST FOR BETTER GRIP OR GLIDE



SKIN SKIS / MOVE – THE ONLY WAY TO ADJUST FOR BETTER GRIP OR GLIDE



SKATE SKIS / MOVE – FOR MORE STABLE SKIS AND MORE SPEED

Adjust the bindings forward and the contact with the snow increases, adjust the bindings backward and the skis are lifted up from the snow, reducing traction.

Waxless, waxable, skate or skin skis? Just MOVE, either way.

Waxing skis is a science. A number of variables will determine the outcome, such as the wax, the air, snow temperature and snow structure – the difference between a great trip and an ordeal can be small. ***This is where MOVE changes the ball game. It allows you to move the waxing zone manually – even while you're skiing.*** Thanks to MOVE, a ski outing on poorly waxed skis can become a nice experience. And a ski outing on perfectly waxed skis, fine-tuned with a MOVE binding, will be amazing.

Skin skis take the wax out of the equation. They do not, however, take the benefit of MOVE out of the equation. The skins make the very foundation of the grip. ***By adjusting the binding forward, the skins contact with the snow increases, improving the grip. By moving the binding backward, the skis are lifted up from the snow and the traction is reduced, which improves the glide and increases the speed.*** This action can be performed continuously, depending on the landscape you're moving through and the snow conditions.

Are you wondering how MOVE works on skate skis? MOVE Tune Skate is optimal for all snow conditions. When the snow is hard and packed you can move the binding forward for more stable skis that are easier to steer. On looser snow, however, you can move the binding backward, so the skis float better on top of the snow. What's not to like?

MOVE suits all skis. By choosing the assembly that fits the mounting plate, just about anyone can move their binding to improve their grip or glide, or better control and speed, without taking off their skis.



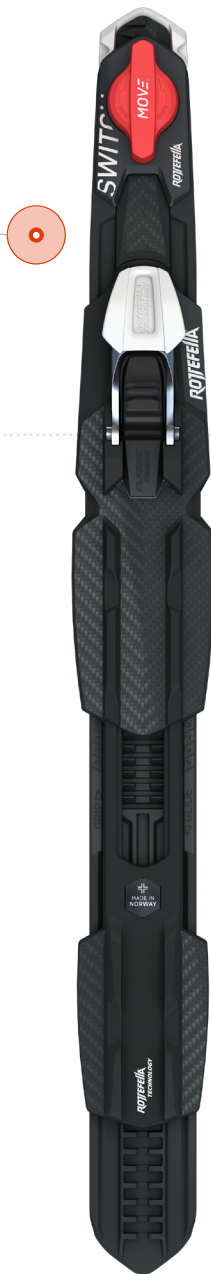
What are you looking for? The choice between better grip and glide or do you want to be able to fine-tune your skis – what ever you need, you will find a MOVE that suits you.

A MOVE for everyone!

We want everybody to be able to feel how amazing it is when everything simply works. We have poured our hearts and souls into this; immeasurable hours and hundreds of miles during our trials and tests, both by ourselves and by world class skiers. [We know quite a few.]

The result is MOVE, a ski-binding that is flexible in every sense of the word. It lets you be the master of grip, glide, speed and control, by simply adjusting the binding position on the skis for either more or less contact with the snow. The result is both flexible and accessible for everyone.

*NB! Skis with a 3D profile close to the mounting plate without a MOVE Interface cannot be used together with MOVE as the adapter's glue surface will not be affixed correctly.



reddot award 2019
winner

4 POSITIONS
FOR GRIP OR GLIDE

ROTTEFELLA MOVE SWITCH

FOR BETTER
GRIP OR GLIDE

Rottefella MOVE Switch provides better grip and glide – even when snow conditions change, the wax wears off or the weight load changes, for example when using a backpack or pulling a sled.

For all skis and ski styles*



2 POSITIONS
FOR QUICK MOVES

ROTTEFELLA MOVE RACE

FOR MAXIMUM GLIDE
IN SECONDS

Rottefella MOVE Race provides immediate glide and prolongs the effect of the ski wax.

For all skis and ski styles*



9 POSITIONS
FOR FINE-TUNING

ROTTEFELLA MOVE TUNE

FOR OPTIMAL SKIS
IN ALL CONDITIONS

Rottefella MOVE Tune gives you the opportunity to fine-tune your bindings according to snow conditions, the characteristics of your skis, and your technique.

For all skis and ski styles*

NIS 3.0 MOUNTING PLATE & ROTTEFELLA MOUNTING PLATE

Mounting plates with intergrated MOVE Interface allows you to mount MOVE bindings directly on to the skis, without the use of an adapter.



MADSHUS
PELTONEN
KASTLE

**ROTTEFELLA
ADAPTIVE PLATE**
Premounted.



MADSHUS
PELTONEN
KASTLE

**NIS 3.0
MOUNTING PLATE**
Premounted.

MOVE interface



**ROTTEFELLA
MOUNTING PLATE**
Screwed on flat
skis.



IFP
MOUNTING PLATE
Premounted.

MOVE adapter



**NIS 1.0
MOUNTING PLATE**
Premounted
to older skis across
all major brands.

For mounting plates without an integrated MOVE interface we have developed adapters.

With a MOVE adapter you can mount MOVE to all skis.



**IFP
ADAPTER**

**NIS 1.0
ADAPTER**

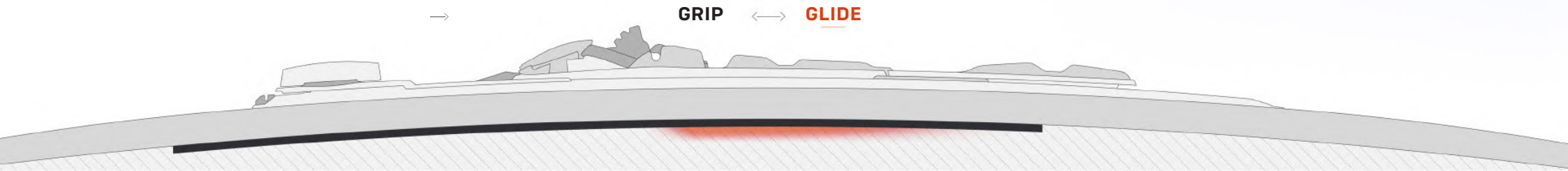
It all starts with the mounting plate

Rottefella offers bindings that are compatible with NIS, IFP, and the new Rottefella Adaptive Plate. For skis without a premounted plate, you can use the Rottefella mounting plate with screws.

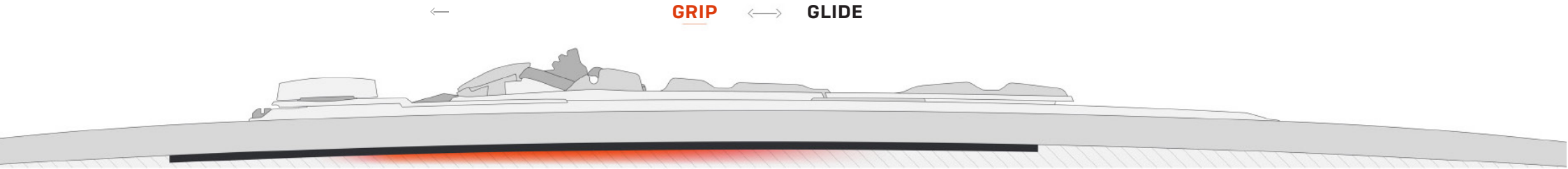
On the left, you can see various plates. Some come with the integrated MOVE interface, while others require an adapter to be MOVE-compatible. The new Rottefella Adaptive Plate is incredibly versatile, featuring different types of inserts for various bindings. Making the MOVE mechanism more compact and integrated into the binding.

On the following pages, you can easily identify which bindings fit which mounting plates. For assistance, feel free to ask us or visit a store that carries Rottefella products.

MOVE POSITION

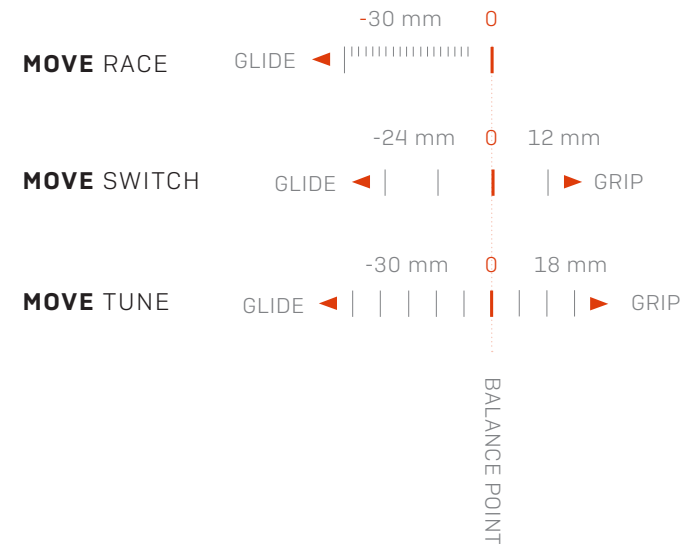


WAX TENSION PRESSURE



WAX TENSION PRESSURE

MOVE changes the skis characteristics by increasing or decreasing contact with the surface.



What does MOVE actually do?

Skiing is ruled by the laws of physics, based on a natural distribution of weight and balance. Walking up a steep hill, crossing a frozen field or gliding down a mountainside — every motion you make changes the contact between the skis and the surface beneath them. It makes sense that the position of your binding should be able to change as well.

And that is why Rottefella designed MOVE, as it changes the ski's characteristics. Choose between three MOVE units that suits you best. MOVE Race is for those who chase seconds, MOVE Switch is for those who want a great skiing experience, and MOVE Tune is for those who want to fine-tune their skis to any snow conditions.

With Rottefella MOVE, we have developed what we believe will give you the very best experience while skiing. It's the only system on the market that allows you to "change gears" while skiing, and do it with ease. Simply turn or flip the handle.

INCLUDED IN MOVE NIS 3.0

MOVE binding
MOVE unit

Rottefella MOVE NIS 3.0 for skis with NIS 3.0 mounting plate and Rottefella Mounting plate



Mount a MOVE binding to NIS 3.0 mounting plate or Rottefella Mounting plate and experience better skis without having to take them off.



ROTTEFELLA MOVE SWITCH NIS 3.0

Changeable flex: Yes

Version: Classic

Moveable: MOVE

Mounting system: NIS 3.0

Shoe norm: NNN

Art. no: 10200363



ROTTEFELLA MOVE RACE NIS 3.0

Changeable flex: Yes

Version: Classic

Moveable: MOVE

Mounting system: NIS 3.0

Shoe norm: NNN

Art. no: 10200380



ROTTEFELLA MOVE TUNE NIS 3.0

Changeable flex: Yes

Version: Skate / Classic

Moveable: MOVE

Mounting system: NIS 3.0

Shoe norm: NNN

Art. no: 10200421 / 10200420



ROTTEFELLA MOVE SWITCH AUTO NIS 3.0

Changeable flex: Yes

Version: Classic / Step-In

Moveable: MOVE

Mounting system: NIS 3.0

Shoe norm: NNN

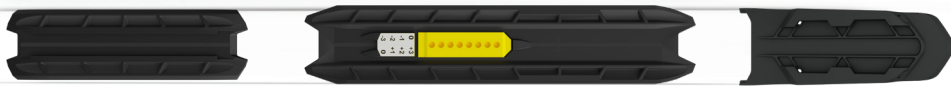
Art. no: 10200418



INCLUDED IN MOVE IFP*

MOVE binding
MOVE unit
MOVE adapter

Rottfella MOVE IFP* for skis with IFP mounting plate



Mount a MOVE binding to IFP* mounting plate and
experience better skis without having to take them off.



ROTTEFELLA MOVE SWITCH IFP*

Changeable flex: Yes

Version: Classic

Moveable: MOVE

Mounting system: IFP*

Shoe norm: NNN

Art. no: 10200351



ROTTEFELLA MOVE RACE IFP*

Changeable flex: Yes

Version: Classic

Moveable: MOVE

Mounting system: IFP*

Shoe norm: NNN

Art. no: 10200378



ROTTEFELLA MOVE TUNE IFP*

Changeable flex: Yes

Version: Skate/Classic

Moveable: MOVE

Mounting system: IFP*

Shoe norm: NNN

Art. no: 10200383 / 10200435



ROTTEFELLA MOVE SWITCH AUTO IFP*

Changeable flex: Yes

Version: Classic / step-In

Moveable: MOVE

Mounting system: IFP*

Shoe norm: NNN

Art. no: 10200417



INCLUDED IN MOVE NIS 1.0

MOVE binding
MOVE unit
MOVE adapter

Rottefella MOVE NIS 1.0 for skis with NIS 1.0 mounting plate



Mount a MOVE binding to NIS 1.0 mounting plate and experience better skis without having to take them off.



ROTTEFELLA MOVE SWITCH NIS 1.0

Changeable flex: Yes

Version: Classic

Moveable: MOVE

Mounting system: NIS 1.0

Shoe norm: NNN

Art. no: 10200352



ROTTEFELLA MOVE RACE NIS 1.0

Changeable flex: Yes

Version: Classic

Moveable: MOVE

Mounting system: NIS 1.0

Shoe norm: NNN

Art. no: 10200379



ROTTEFELLA MOVE TUNE NIS 1.0

Changeable flex: Yes

Version: Skate

Moveable: MOVE

Mounting system: NIS 1.0

Shoe norm: NNN

Art. no: 10200384



ROTTEFELLA MOVE SWITCH AUTO NIS 1.0

Changeable flex: Yes

Version: Classic / Step-in

Moveable: MOVE

Mounting system: NIS 1.0

Shoe norm: NNN

Art. no: 10200419







ROTTEFELLA SPORT SCREW

Changeable flex: Yes

Version: Skate / Classic

Moveable: No

Mounting system: Screw

Shoe norm: NNN

Art.no.: 10200404 / 10200405

Rottefella Sport Screw can be screwed directly onto all flat skis.



Probably the lightest screw binding in the world!

Rottefella's Sport Screw is probably the best and lightest screw binding on the market today. It is the ultimate screw binding for flat skis with its light

weight, high durability and easy mountability. Sport Screw comes with an interchangeable flex aiming for better control while skiing.



ROTTEFELLA XCELERATOR 2.0

Changeable flex: Yes

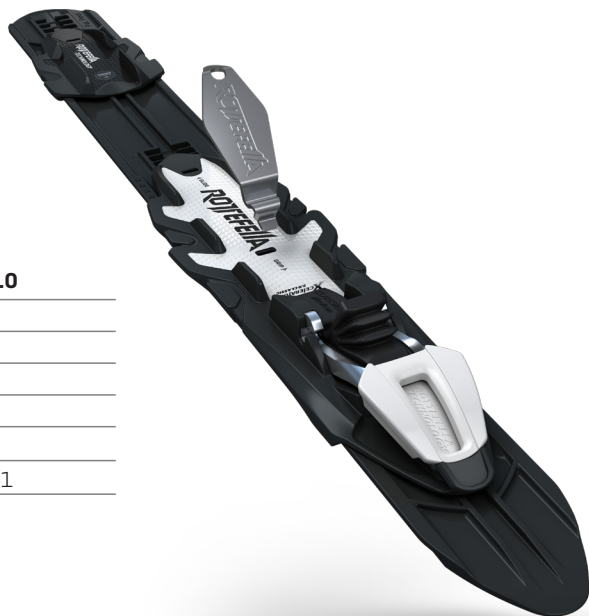
Version: Skate / Classic

Moveable: NIS key

Mounting system: NIS

Shoe norm: NNN

Art. no.: 10200329 / 10200331



ROTTEFELLA XCELERATOR JUNIOR

Changeable flex: Yes

Version: Skate / Classic

Moveable: NIS key

Mounting system: NIS

Shoe norm: NNN

Art. no.: 10200186 / 10200188



ROTTEFELLA XCELERATOR PRO CLASSIC

Changeable flex: Yes

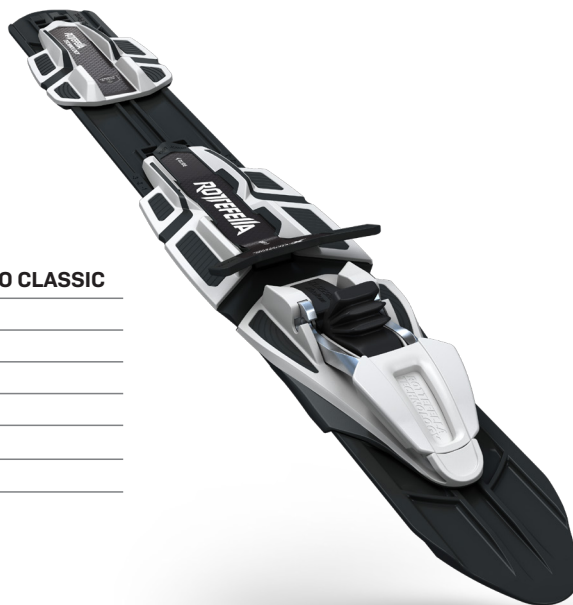
Version: Skate / Classic

Moveable: Quicklock

Mounting system: NIS

Shoe norm: NNN

Art. no: 10200328



ROTTEFELLA XCELERATOR PRO SKATE

Changeable flex: Yes

Version: Skate

Moveable: Quicklock

Mounting system: NIS

Shoe norm: NNN

Art. no: 10200326





ROTTEFELLA PERFORMANCE

Changeable flex: Yes

Version: Skate / Classic

Moveable: NIS key

Mounting system: NIS

Shoe norm: NNN

Art. no.: 10200335 / 10200338



ROTTEFELLA TOURING AUTO

Version: Classic / Step-in

Moveable: NIS key

Mounting system: NIS

Shoe norm: NNN

Art.no.: 10200197



ROTTEFELLA BASIC

Moveable: No

Version: Step-in

Mounting system: Screw

Shoe norm: NNN

Art. nr bulk: 10200157



ROTTEFELLA START

Moveable: No

Version: Step-in

Mounting system: Start

Shoe norm: NNN

Art. nr bulk: 10200157





ROTTEFELLA SKATEX PRO ROLLERSKI

Changeable flex: Yes

Version: Skate

Mounting system: Mounting plate (screw)

Shoe norm: SkateX

Art.no.: 10200453



ROTTEFELLA ROLLERSKI

Changeable flex: Yes

Version: Classic / Skate

Mounting system: Screw

Shoe norm: NNN

Art.no.: 10200279 / 10200280



Rottefella mounting plates

Here is an overview of the most common mounting plates. Our bindings are compatible with one or more plates, so we have made a coding system to allow you to navigate easier. Each binding has a symbol indicating the corresponding mounting plate.



ROTTEFELLA ADAPTIVE PLATE



Moveable clicks: depending on insert

Mounting plate: premounted



ROTTEFELLA MOUNTING PLATE



Moveable clicks: 6

Mounting plate: screw

Art no. 40800063



ROTTEFELLA NIS 3.0 MOUNTING PLATE



Moveable clicks: 7

Mounting plate: premounted



ROTTEFELLA START MOUNTING PLATE



Moveable clicks: No

Mounting plate: screw

Art.no. ski length 90-125: 40800029

Art.no. ski length 130-170: 40800022



ROTTEFELLA NIS 1.0 MOUNTING PLATE



Weight: 30 g

Moveable clicks: 7

Mounting plate: premounted



ROTTEFELLA TOURING MOUNTING PLATE



Moveable clicks: No

Mounting plate: screw

Art no. 40200016

Other compatible mounting plates



IFP* MOUNTING PLATE



Moveable clicks: 7

Mounting system: IFP*

Mounting plate: premounted



reddot winner 2022





Rottfella Xplore backcountry system for better mobility, stability and a lot more fun!

ROTTFELLA XPLORE BACKCOUNTRY OFF-TRACK

Changeable flex: Yes

Mounting system: Screw

Shoe Norm: BC Xplore

Art.no.: 10200398

Rottfella Xplore is a new backcountry binding system which will greatly improve your skiing experience. The system provides better mobility when skiing across all types of terrain and greater stability during downhill skiing. This will give you an increased sense of confidence and enjoyment of backcountry skiing.

Rottfella Xplore Backcountry Off-Track is the first binding within the Rottfella Xplore system with the integrated SpringPin technology. The location of the SpringPin in the binding is the key to better stability and mobility for a safer and more comfortable exploration off-track. Enjoy your neighbourhood in a different way. Xplore more, and more often, with Rottfella Xplore.



Rottefella Xplore Accessories

The Xplore backcountry binding has interchangeable flex. The flex is a flexible pad which provides bending resistance. It helps you control the skis and gives you a more natural kick-and-return cycle. You can easily change the Allround flex that comes with the binding to Rottefella Xplore Hard Flex for a better experience when skiing downhill by providing increased resistance against the boot

and a more controlled descent. Change to Rottefella Xplore Free Pivot Plate for a maximum range of motion and a more comfortable walking feeling in steeper terrain, and when pulling a pulk. The grease lubricates and maintains the SpringPin mechanism. Essential for easy entry and exit of the Rottefella Xplore binding. We recommend you maintain your SpringPin every season.



ROTTEFELLA XPLORE BACKCOUNTRY HARD FLEX

Product: Xplore

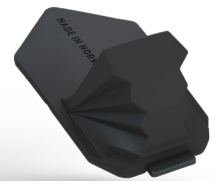
Art. no: 10200399



ROTTEFELLA XPLORE BACKCOUNTRY FREE PIVOT PLATE

Product: Xplore

Art. no: 10200400



ROTTEFELLA XPLORE BACKCOUNTRY ALLROUND FLEX

Product: Xplore

Art. no: 20200760



ROTTEFELLA XPLORE BACKCOUNTRY LEASH

Product: Xplore

Art. no: 10200401



ROTTEFELLA XPLORE BACKCOUNTRY GREASE

Product: Xplore

Art. no: 40800076

ROTTEFELLA BACKCOUNTRY AUTO

Changeable flex: Yes

Mounting system: Screw

Shoe norm: NNN BC

Art. no. bulk: 10200175



ROTTEFELLA BACKCOUNTRY MAGNUM

Changeable flex: Yes

Mounting system: Screw

Shoe norm: NNN BC

Art. no: 10200179



ROTTEFELLA 75 MM WITH CABLE / LONG

Shoe size: 42 - 49

Toe binding

Screw binding

75 mm 3 pin

Shoe Norm: 75 mm

Art. no: 10100074

ROTTEFELLA 75 MM WITH CABLE / SHORT

Shoe size: 36 - 44

Toe binding

Screw binding

75 mm 3 pin

Shoe Norm: 75 mm

Art.no.: 10100075

SUPER TELEMARCK

Toe binding

Screw binding

75 mm 3 pin

Shoe Norm: 75 mm

Art.no.: 10200159



ROTTEFELLA BACKCOUNTRY MANUAL

Changeable flex: Yes

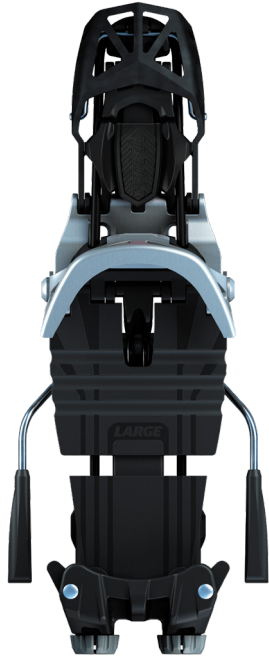
Mounting system: Screw

Shoe norm: NNN BC

Art. no: 10200177







OFF
PISTE
SKIING



ROTTEFELLA FREEDOM

Changeable powertubes: Yes

Mounting system: Screw

Shoe Norm: NTN

Art.no. long 110 mm: 1010048

Art.no. short 110 mm: 1010049

Art.no. long 95 mm: 1010066

Art.no. short 95 mm: 1010067



GROOM
PISTE
SKIING



ROTTEFELLA FREERIDE

Changeable powerbox: Yes

Mounting system: Screw

Shoe Norm: NTN

Art.no. long 110 mm: 1010050

Art.no. short 110 mm: 1010051

Art.no. long 95 mm: 1010064

Art.no. short 95 mm: 1010065

Telemark

Telemark NTN bindings gives an immediate energy transfer from boot to edge. Spring technology provides an even, smooth and adjustable pressure in front when skiing.

Accessories



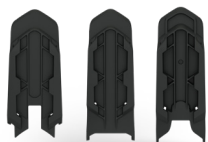
ROTTEFELLA MOVE GEN.1 ADAPTIVE INSERT

Art. no: 20800189



ROTTEFELLA NIS LOCK ADAPTIVE INSERT

Art. no: 20800194



ROTTEFELLA MOVE ADAPTERS

Art. no adapter NIS 1.0: 20800111

Art. no adapter RMP: 20800110

Art. no adapter IFP: 20800112



ROTTEFELLA HANDLES

Art. no: 40800053



ROTTEFELLA PERFORMANCE FLEX CLASSIC

Version: Classic

Interchangeable: Yes

Compatible bindings: Rottefella Performance, Rottefella MOVE Switch Performance

Art. no: 40800093



ROTTEFELLA FLEX SKATE MEDIUM

Version: Skate

Interchangeable: Yes

Compatible bindings: Rottefella MOVE, Quicklock, Performance NIS, Xcelerator, Sports Screw & Rollerski

Art. no: 40800004



ROTTEFELLA FLEX CLASSIC MEDIUM

Version: Classic

Interchangeable: Yes

Compatible bindings: Rottefella MOVE, Quicklock, Performance NIS, Xcelerator, Sports Screw & Rollerski

Art. no: 40800003



ROTTEFELLA PERFORMANCE FLEX SKATE

Version: Skate

Interchangeable: Yes

Compatible bindings: Rottefella Performance, Rottefella MOVE Switch Performance

Art. no: 40800092



ROTTEFELLA FLEX SKATE HARD

Version: Skate

Interchangeable: Yes

Compatible bindings: Rottefella MOVE, Quicklock, Performance NIS, Xcelerator, Sports Screw & Rollerski

Art. no: 40800015



ROTTEFELLA FLEX CLASSIC HARD

Version: Classic

Interchangeable: Yes

Compatible bindings: Rottefella MOVE, Quicklock, Performance NIS, Xcelerator, Sports Screw & Rollerski

Art. no: 40800016



ROTTEFELLA SKATEX FLEX

Art. no: 40800094



ROTTEFELLA FLEX SKATE SOFT

Version: Skate

Interchangeable: Yes

Compatible bindings: Rottefella MOVE, Quicklock, Performance NIS, Xcelerator, Sports Screw & Rollerski

Art. no: 40800013



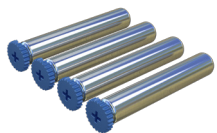
ROTTEFELLA FLEX CLASSIC SOFT

Version: Classic

Interchangeable: Yes

Compatible bindings: Rottefella MOVE, Quicklock, Performance NIS, Xcelerator, Sports Screw & Rollerski

Art. no: 40800014

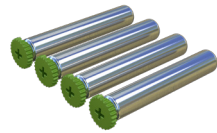


ROTTEFELLA FREERIDE POWER TUBES MEDIUM

Compatible binding: Freeride

Interchangeable: Yes

Art. no: 408000008



ROTTEFELLA FREERIDE POWER TUBES SOFT

Compatible binding: Freeride

Interchangeable: Yes

Art. no: 408000007



ROTTEFELLA FREEDOM POWERBOX SOFT

Compatible binding: Freedom

Interchangeable: Yes

Art. no: 208000081



ROTTEFELLA FREEDOM POWERBOX MEDIUM

Compatible binding: Freedom

Interchangeable: Yes

Art. no: 208000080.



ROTTEFELLA FREERIDE MOUNTING PLATE WITH HEEL SET

Compatible binding: Freeride

Art. no: 208000085



ROTTEFELLA FREERIDE 10MM SPACER

Compatible binding: Freeride

Art. no.: 20200407



ROTTEFELLA FREERIDE SKI BRAKE

95mm / art. no: 208000010

110mm / art. no: 208000011

125mm / art. no: 208000012



ROTTEFELLA FREEDOM SKI BRAKE

95mm / art. no: 208000082

110mm / art. no: 208000083

125mm / art. no: 208000084



ROTTEFELLA XPLORE BACKCOUNTRY HARD FLEX

Compatible binding: Xplore

Interchangeable: Yes

Art. no: 10200399

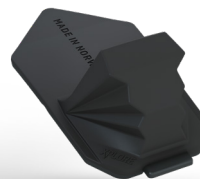


ROTTEFELLA XPLORE BACKCOUNTRY FREE PIVOT PLATE

Compatible binding: Xplore

Interchangeable: Yes

Art. no: 10200400



ROTTEFELLA XPLORE BACKCOUNTRY ALLROUND FLEX

Compatible binding: Xplore

Interchangeable: Yes

Art. no: 20200760



ROTTEFELLA XPLORE BACKCOUNTRY LEASH

Compatible binding: Xplore

Art. no: 10200401



ROTTEFELLA XPLORE BACKCOUNTRY GREASE

Compatible binding: Xplore

Art. no: 408000076

Jig / Inserts



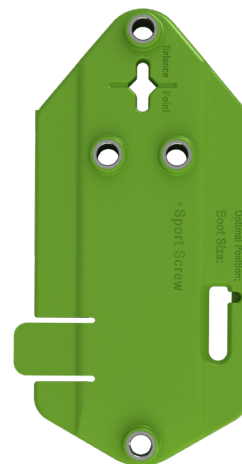
Our range of inserts for mounting Rottefella bindings precisely onto skis.



ROTTEFELLA START / BASIC INSERT

For: Rottefella Basic / Rottefella Start mounting plate/ Rottefella Step-In

Art.no: 40800024



ROTTEFELLA ROLLERSKI / SPORT SCREW INSERT

For: Rottefella Rollerski / Rottefella Sport Screw

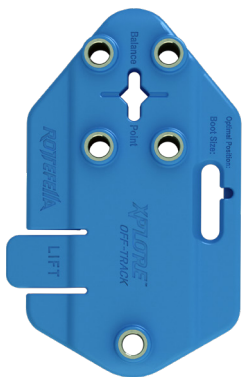
Art.no: 40800055



ROTTEFELLA SKATEX ROLLERSKI MOUNTING PLATE INSERT

For: Rottefella SkateX Rollerski Mounting Plate

Art.no: 40800101



ROTTEFELLA XPLORE BACKCOUNTRY INSERT

For: Rottefella Xplore Backcountry
Off-Track

Art.no: 40800066



ROTTEFELLA BACKCOUNTRY INSERT

For: Rottefella Backcountry

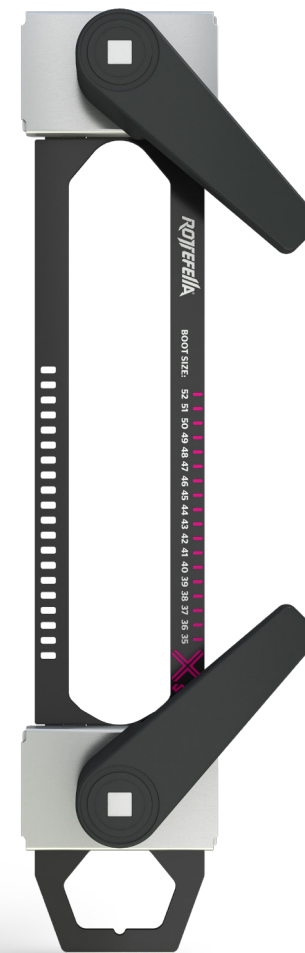
Art.no: 40800025



ROTTEFELLA 75 MM INSERT

For: Rottefella 75 mm
and Super Telemark

Art.no: 40800086



ROTTEFELLA JIG, INCLUDING INSERTS

Art.no.: 10200144

ROTTEFELLA