

SINCE 2002



2015



MadRock.eu

MadRock Europe - NIHIL B.V.

Goolkatenweg 65 - 7521 BE Enschede

(t) +31 (0)53 4366 603 (E) info@madrock.eu

TABLE OF CONTENTS

Rubber Technology

Pages 2-3

Climbing Shoes

Pages 4-14

Rentals

Pages 15

Belay Devices

Pages 16

Harnesses

Pages 17

Crash Pads

Pages 18-21

Chalk Bags

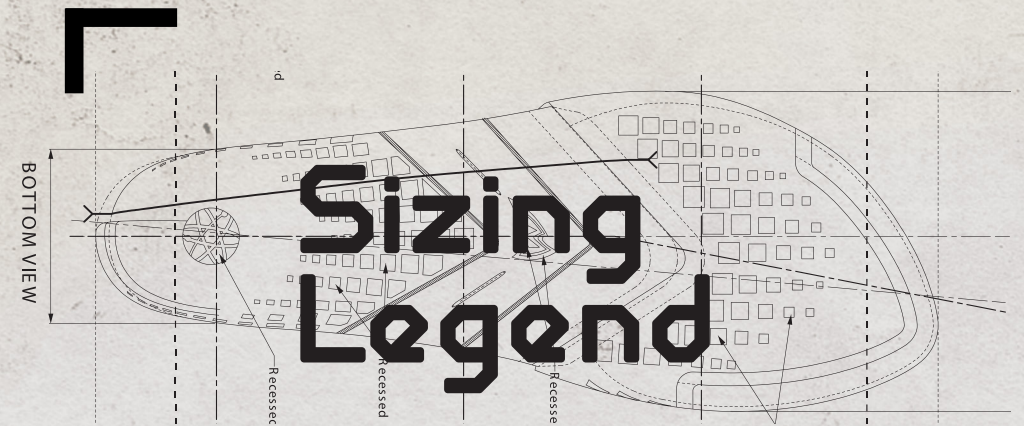
Pages 22-23

Chalk

Pages 24

Marketing

Pages 25



Comfort Fit

Street Shoe Size

Performance Fit

Half Size Down from Street Shoe Size

Drone CS

The exception to the rule.

Adjust by going up a half size.

CLIMBING IS OUR PASSION

SCIENCE FRICTION

 RUBBER
MADE IN
U S A

3D MOLDED
HEEL CUP

3D MOLDED
CLIP

 INNOVATION



XTREME FRICTION

A rubber compound designed to give you maximum friction on climbing holds by giving XF significantly softer and more flexible characteristics, it allows the climbing shoe to grip and retain it's "memory" over various surfaces.



SCIENCE FRICTION 3

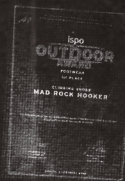
Years after the launch of the first Mad Rock rubber formula, our new Science Friction 3 compound marks a special milestone for the Mad Rock brand. After exhaustive research and a new production process originating in the USA, our new formula has distinctively different characteristics than our previous batches. More durable than any of our previous formulas, our new Science Friction 3 also boasts higher friction. This optimal balance is incorporated into our new mix by increasing the tear strength and the memory of the compound. Due to its unique characteristics and unparalleled performance, our new Science Friction 3 formula is used on our shoe components like the 3D Hooking Heel, 3D Concave Sole as well as the soles in all of our rock shoes.

MAD ROCK

SINCE 2002

CONCAVE
SOLE

PATENTED
CONCAVE SOLE



2003/04 Winter ISPO Outdoor Award
1st Place, Footwear Category

 INNOVATION

ARCH
FLEX

 INNOVATION



RAND RUBBER

Higher friction and durability for the rand rubber is a testament to our commitment to performance and improvement in our rock shoe line. Enhancing the elasticity of the rand rubber was also a priority when developing the new rand rubber. As our new Science Friction R2 has greater give without the loss of performance, our new models feel extremely comfortable and sensitive, giving you that glove-like fit.



PERMA

Our Perma rubber formula was created to last as long as possible while still maintaining friction properties like traditional climbing grade rubber. Perma rubber can come in various colors for non-marking performance as well as to distinguish it from our SF 3 formula.



REMORA PRO

SPECS: Sizes: 4-13

Stiffness: Soft
Profile: Aggressive
Asymmetrical Curvature: Moderate
Closure: Hook-and-Loop

Features: Heel lock, Tension wrap, Comfort disc, Knuckle bumps



**3D HOOKING
RIM HEEL**

**KNUCKLE
BUMPS**

REMORA PRO

HIV

ILV

**PATENTED
CONCAVE SOLE**

SHARK 3

SPECS: Sizes: 3-13

Stiffness: Balanced
Profile: Moderate
Asymmetrical Curvature: Moderate
Closure: Hook-and-Loop

Features: Adjustable elastic band system,
Knuckle bumps, Xtreme friction upper



Shark 3 / LOW VOLUME



Shark 3 / HIGH VOLUME



DRONE FAMILY



DRONE^{CS}

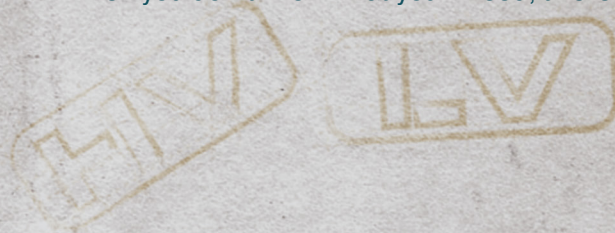
The Drone CS was built to grip what others can't. Utilizing our stickiest rubber ever created (Xtreme Friction), you'll smear and move in confidence like you've got something to prove. Its anatomically-correct midsole boosts surface area contact with a foothold, where every millimeter of contact counts.

DRONE²

Backed by a full polycarbonate midsole and supportive structural mold, the Drone 2 delivers unapologetic stiffness when you need it most. Steep caves, roofs, and overhung battles are where the Drone 2 shines. Engineered to dig in on any edge and built to stay downturned for the life of the shoe - the Drone 2 is the undisputed powerhouse of the family.


DRONE^{D2.ONE}

Created to bridge the gap between the Drone CS and the Drone 2, the D2.ONE is your all-project killer. Steep or slab, power or precision, the shoe adapts without compromise. When you don't know what you'll need, this is what you wear.




DRONE

Drone CS / **LOW VOLUME** 

www://WEB 

Drone CS / **HIGH VOLUME** 

www://WEB 



SPECS: Sizes: 4-13, 14

Stiffness: Balanced
 Profile: Aggressive
 Asymmetrical Curvature: Significant
 Closure: Hook-and-Loop

Features: Concave sole, Arch flex system, Ergonomic midsole



DRONE 2



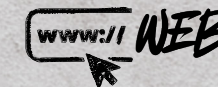
SPECS: Sizes: 4-13, 14

Stiffness: Stiff
Profile: Highly Aggressive
Asymmetrical Curvature: Significant
Closure: Hook-and-Loop

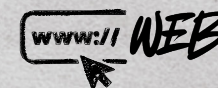
Features: Concave sole, Arch flex system, 3D Hooking heel



Drone 2 / **HIGH VOLUME**



Drone 2 / **LOW VOLUME**



D2.ONE

WIDER OPENING

Midsole

SPECS: Sizes: 4-13, 14

Stiffness:	Balanced
Profile:	Aggressive
Asymmetrical Curvature:	Significant
Closure:	Hook-and-Loop

Features: Concave sole, Arch flex system, Hooking heel



D2.ONE / LOW VOLUME

www://WEB



D2.ONE / HIGH VOLUME

www://WEB

ROVER

WHITE

www:// WEB



Rover / WHITE, BLACK



BLACK

www:// WEB

SPECS: Sizes: 3-13, 14, 15

Stiffness:	Supportive
Profile:	Neutral
Asymmetrical Curvature:	Moderate
Closure:	Hook-and-Loop

Features: 3D molded heel, Concave sole, Double strap



PHOENIX



LACE SYSTEM

LEATHER CONSTRUCTION



SPECS: Sizes: 3-13, 14, 15, 16

www.11WEB

Stiffness:	Stiff
Profile:	Neutral
Asymmetrical Curvature:	Slight
Closure:	Lace

Features: Lace closure, Leather, EVA padded pull tab



The Remora confidently sticks to any surface like a fish cuts through the water.

EVA-Filled Pull Tab

Slight downturn performs on vertical to steep climbs

Syn Flex upper provides great comfort to performance ratio.

REMORA



Remora / **LOW VOLUME**

www://WEB



Remora / **HIGH VOLUME**

www://WEB

SPECS: Sizes: 3-13

Stiffness:	Soft
Profile:	Moderate
Asymmetrical Curvature:	Moderate
Closure:	Elastic

Features: Power patch, Toe rubber patch, Elastic closure



MAD MONKEY 3

SPECS: Kid sizes: 1-5
Toddler sizes: 9-13

Stiffness: Hybrid
Profile: Neutral
Asymmetrical Curvature: Significant
Closure: Hook-and-Loop

Features: 3D molded toebox,
adjustable heel strap

www:// WEB



BLUE



GYM ESSENTIAL

6
MONTH
GUARANTEE

THE BEST RENTAL FLEET

Guaranteed for 6 months! As always, we will replace or repair any rental shoe that doesn't hold up to regular gym or rental use.

*Snap button NOT covered under guarantee.

3D TOE CAP

SNAP BUTTON

SIZE LABEL

Features: 3D molded toebox, Size label

RHINO



Sizes: 3-13,14,15

ARMADILLO



Features: 3D molded toebox, Size label

Sizes: 3-13,14,15,16

MAD BADGER



Kid sizes: 1-5

Toddler sizes: 9-13

Features: 3D molded, adjustable heel strap, Size label

SAFEGUARD




Springless

Certification **CE EN: 15151-1**
Weight: 154 g



Designed specifically for rescue and rigging applications, the Safeguard offers a different handling characteristic than the Lifeguard. By removing the internal spring mechanism, the device engages the rope with minimal force, helping keep systems securely in place once positioned. The result is dependable rope control and added confidence during technical setups and rescue scenarios.

LIFEGUARD



Certification **CE EN: 15151-1**
Weight: 154 g



Compact, lightweight, and built for long-term durability, the Lifeguard is an assisted braking belay device designed for everyday climbing use. Constructed from hot-forged aircraft-grade aluminum and stainless steel, it delivers smooth handling and reliable performance in a durable package. Compatible with single ropes from 8.9 mm to 11 mm, the Lifeguard supports both lead climbing and top-rope belaying using familiar belay techniques.

MARS 5

HARNESS
Belay Loop: 26 kN

VENUS 5

HARNESS
Belay Loop: 26 kN



BACK VIEW



BACK VIEW

	<i>XS</i>	<i>S</i>	<i>M</i>	<i>L</i>	<i>XL</i>
Waist	69-74 CM	74-79 CM	79-84 CM	84-89 CM	89-97 CM
Legs	46-51 CM	48-53 CM	51-56 CM	53-58 CM	56-61 CM

Features: Speedlock buckles, Foam lining, Molded gear loops

	<i>XS</i>	<i>S</i>	<i>M</i>	<i>L</i>
Waist	64-69 CM	69-74 CM	74-79 CM	79-89 CM
Legs	46-51 CM	48-53 CM	51-56 CM	53-58 CM



MAD PAD



MADGIC CARPET

Every Pad comes with a detachable (41 x 30 x 0,64 cm) Madgic Carpet for scraping dirt off your shoes at the base of the climb. Or, it can be used as a nice sitting mat while you prepare and relax before your send!

All our crash pads share the same thickness, making it easy to combine them into a consistent landing surface. No uneven transitions between pads, just reliable coverage throughout.

Open Dimensions: 122 x 91 x 12 cm

Closed Dimensions: 61 x 91 x 25 cm

Weight: 6.4 kg

1-3-1 Sandwiched Foam Construction
(2,5 cm closed / 7,6 cm open / 2,5 cm closed)



Material:
600D Polyester



BLACK



LAVENDER



TEAL



SAND



SAFFRON



PAD PAD

www:// WEB

Open Dimensions: 142 x 107 x 12 cm

Closed Dimensions: 61 x 107 x 25 cm

Weight: 7,8 kg

1-3-1 Sandwiched Foam Construction
(2,5 cm closed / 7,6 cm open /
2,5 cm closed)

REMOVABLE /
ADJUSTABLE
STRAPS

EVA
MEMORY
FOAM



LAVENDER



MADGIC CARPET

Every Pad comes with a detachable (41 x 30 x 0,64 cm) Madgic Carpet for scraping dirt off your shoes at the base of the climb. Or, it can be used as a nice sitting mat while you prepare and relax before your send!



SAFFRON



MINT

100%
RECYCLED
FABRIC

Material:
600D Polyester

All our crash pads share the same thickness, making it easy to combine them into a consistent landing surface. No uneven transitions between pads, just reliable coverage throughout.

TRIPLE PAD



Material:
600D Polyester

www.j1web.com



Open Dimensions: 183 x 107 x 12 cm

Closed Dimensions: 71 x 107 x 25 cm

Weight: 10,9 kg

1-3-1 Sandwiched Foam Construction
(2,5 cm closed / 7,6 cm open / 2,5 cm closed)

MADGIC CARPET



Every Triple Pad will also come with a detachable (41 x 30 x 0,64 cm) Madgic Carpet for scraping dirt off your shoes at the base of the climb. Or, it can be used as a nice sitting mat while you sit and relax before your send!

CONNECTION SYSTEM



All our crash pads share the same thickness, making it easy to combine them into a consistent landing surface. No uneven transitions between pads, just reliable coverage throughout.

TRIPLET

Our Triplet can be used to cover gaps and seams between crash pads, but can also be wrapped around trees. The hook-and-loop systems locks the Triplet in place to avoid slippage and shifting.

www://WEB

SAND

LAVENDER



Open Dimensions: 135 x 91 x 2 cm

Closed Dimensions: 46 x 91 x 7 cm

Weight: 1,2 kg



Material:
600D Polyester

BAG CLOSURE

SIDE POCKETS

POLYESTER

BRUSH HOLDER

HIDDEN POCKET

HANGER

www:// WEB

100% RECYCLED FABRIC

Material
600D Polyester,
16oz Waxed Canvas



DEEP TEAL

BLACK



SAND

LAVENDER

BOLT

www:// WEB



BLACK / GREY



SAND / BROWN



DEEP TEAL / BROWN



LAVENDER / GREY

100% RECYCLED FABRIC

Material
600D Polyester,
16oz Waxed Canvas



ALUMINIUM PULL TAP

BACK ZIPPER POCKET

CLOSED
OPEN

LACHALK



TRANSPARENT
GRIP LOTION
59ml



LIQUID CHALK
0.0 ALCOHOL
50ml



LIQUID CHALK
ALCOHOL
50ml



LIQUID CHALK
0.0 ALCOHOL
200ml



LIQUID CHALK
ALCOHOL
200ml



CRUSHED CHALK
300gr



SPORTS TAPE
38mm



SPORTS TAPE
13mm



BRUSH
15x185mm



BRUSH
15x185mm



BRUSH
15x185mm



BRUSH
15x185mm



BRUSH
15x185mm



BRUSH
20x190mm



BRUSH
20x160mm

MAD ROCK BRAND

					
Deli Yellow EFAF21	Tofu E7ESD6	Turquoise 69B2B0	Nightfall 0F5160	Smouldering Red CA3830	Black 0A0203



LOGOS_

COLORS_

MEDIA_

TYPOGRAPHY / ALIGNMENT

GiantRobotGiant

CLIMBING
DISCOVER
PASSION